

Abbott BinaxNOW COVID-19 Ag CARD HOME TEST KIT

Ohio User Guide



Getting Started

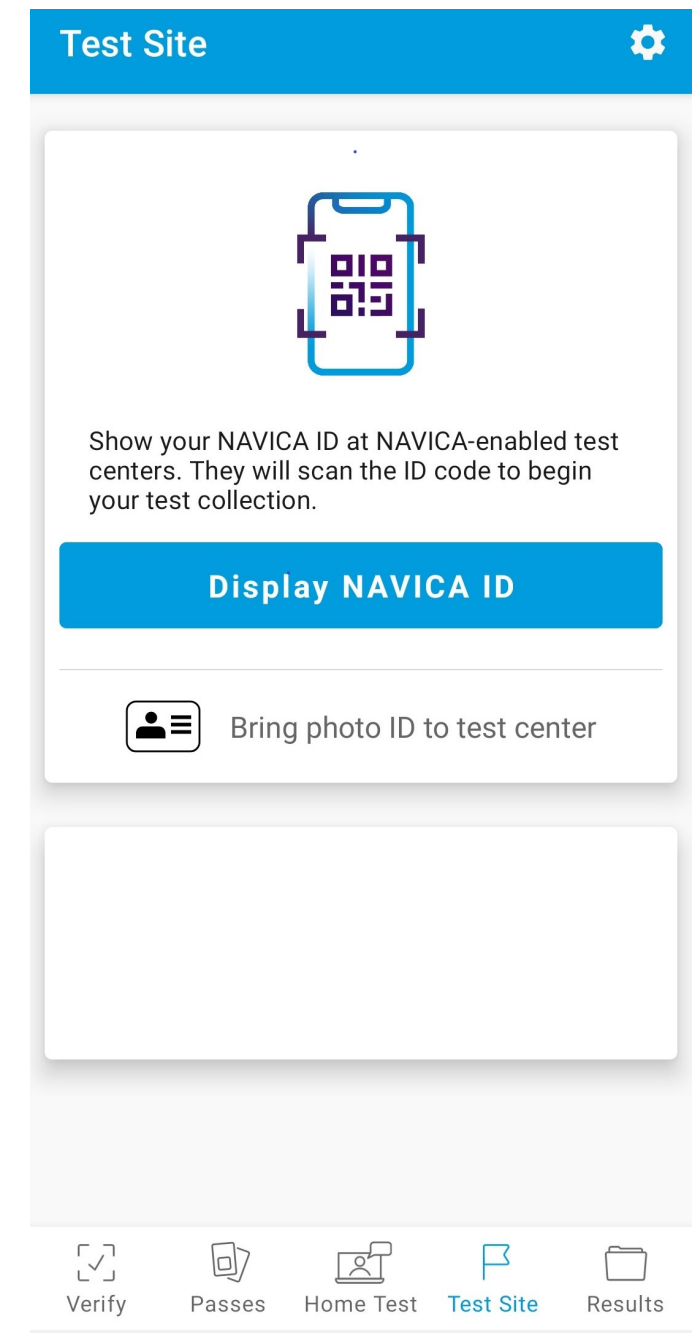
DO NOT OPEN ITEMS UNTIL INSTRUCTED TO DO SO

A. Download the NAVICA app from the Apple App Store or Google Play Store on your smartphone or tablet

B. Login or create a NAVICA account – create a managed profile for any children or other dependents you plan to get tested under the “Account and Settings” icon at the top of the screen.

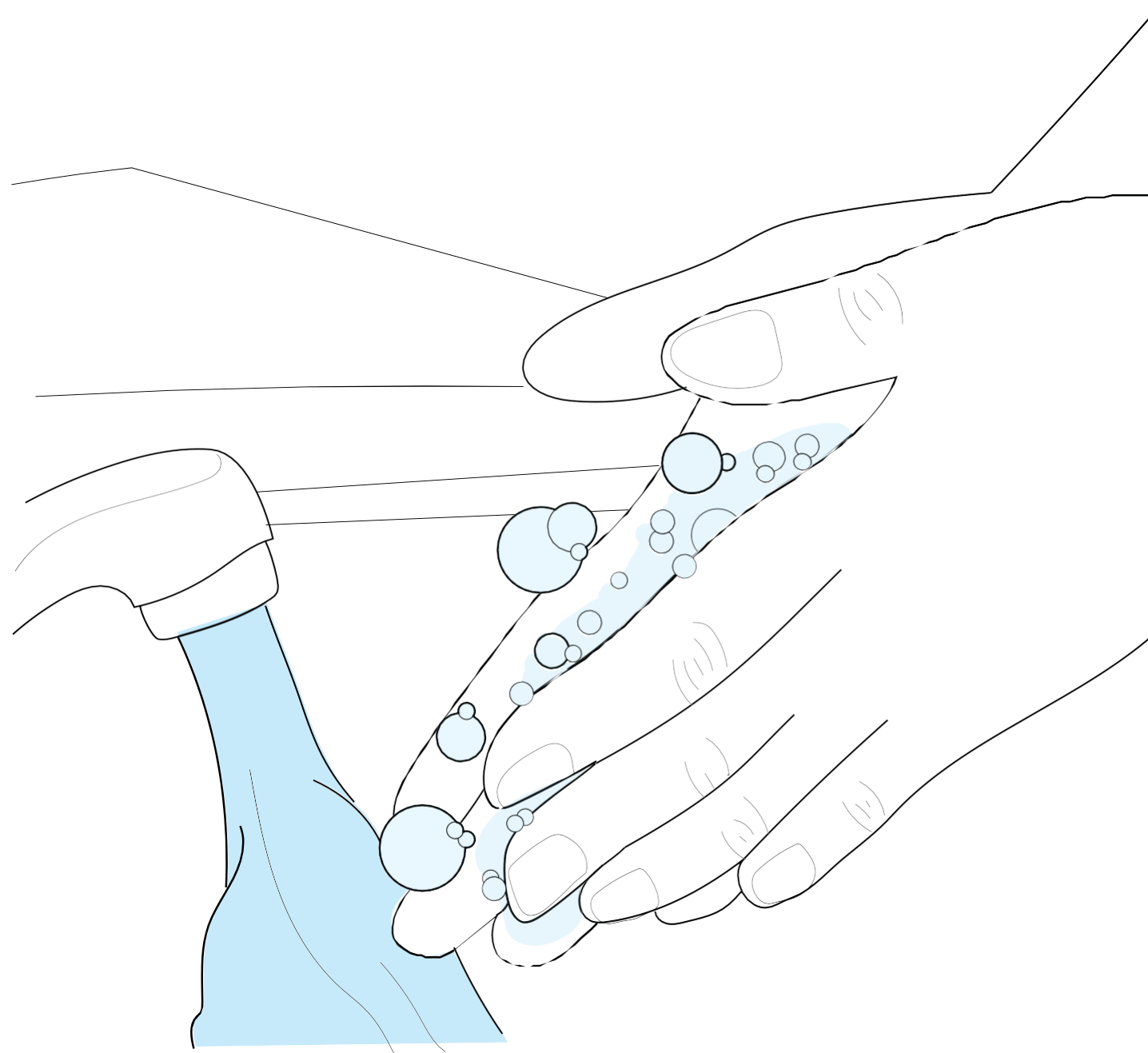
C. Find available test pickup sites on ohio.emed.com

D. Select “Test Site” in the NAVICA app and display the NAVICA ID to pick up a test for anyone on your account



Wash Your Hands

Wash or sanitize your hands. Make sure they are dry before starting.

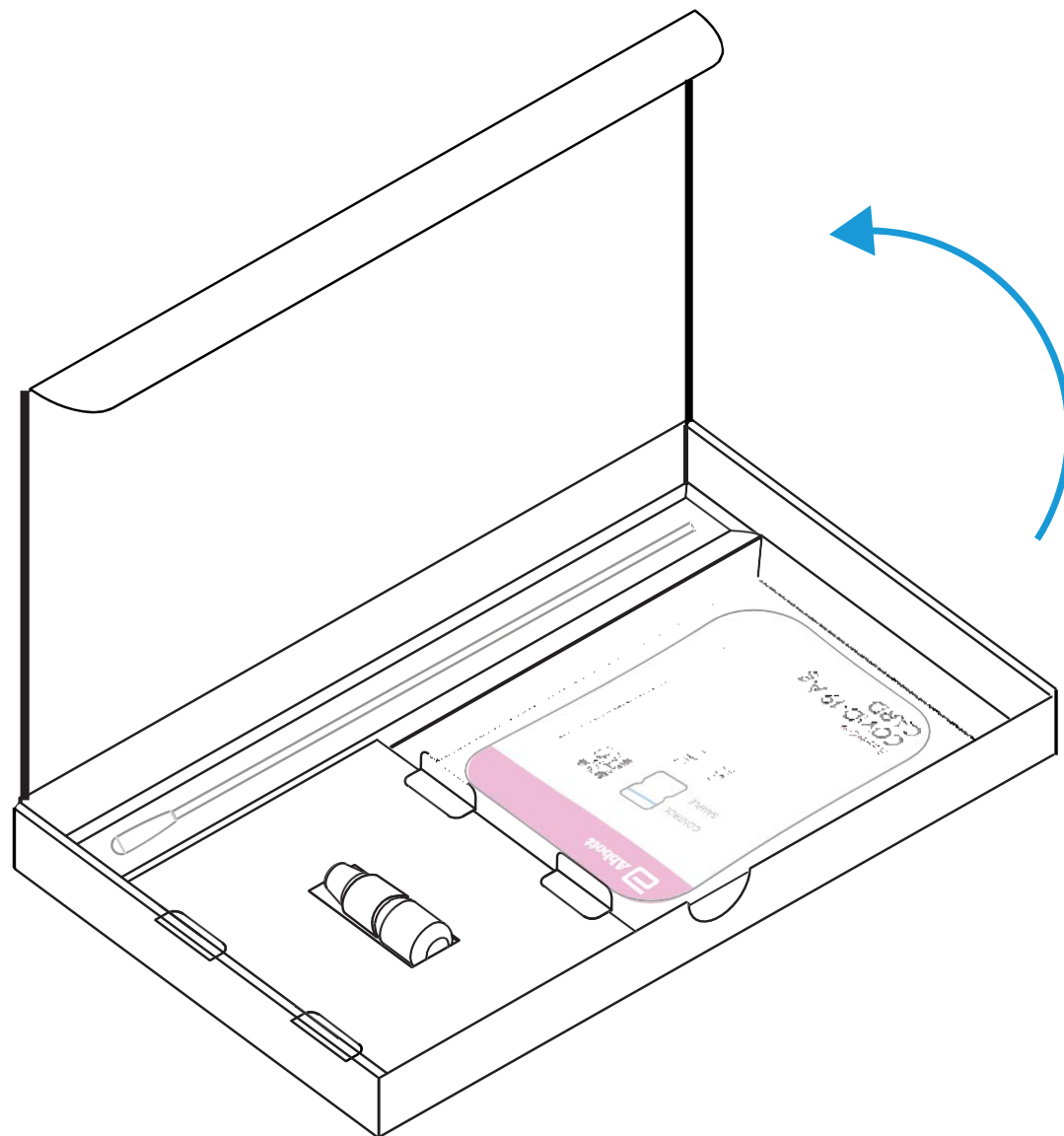


1 Set Up



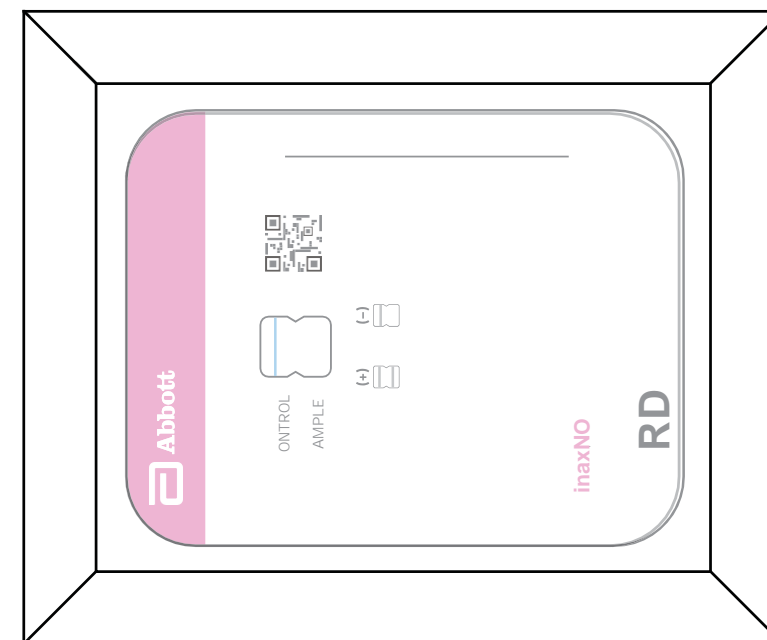
DO NOT open items until instructed.

A. Open your test kit.



B. You should have:

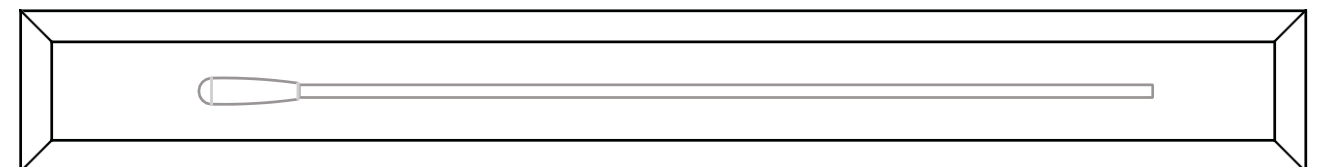
1 Test Card



1 Dropper Bottle



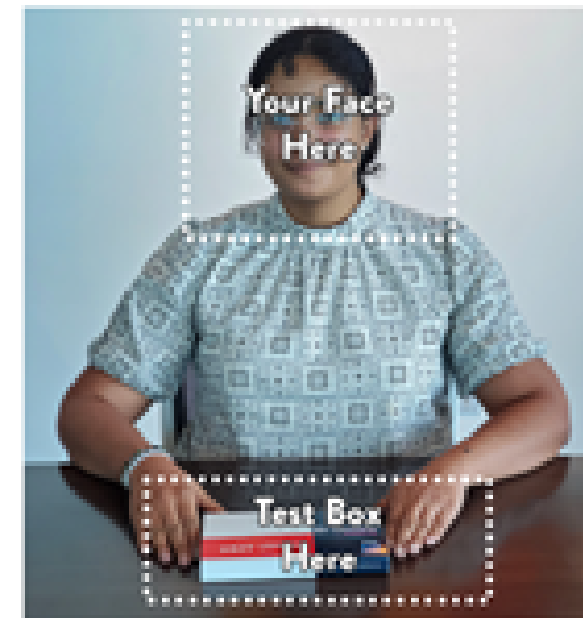
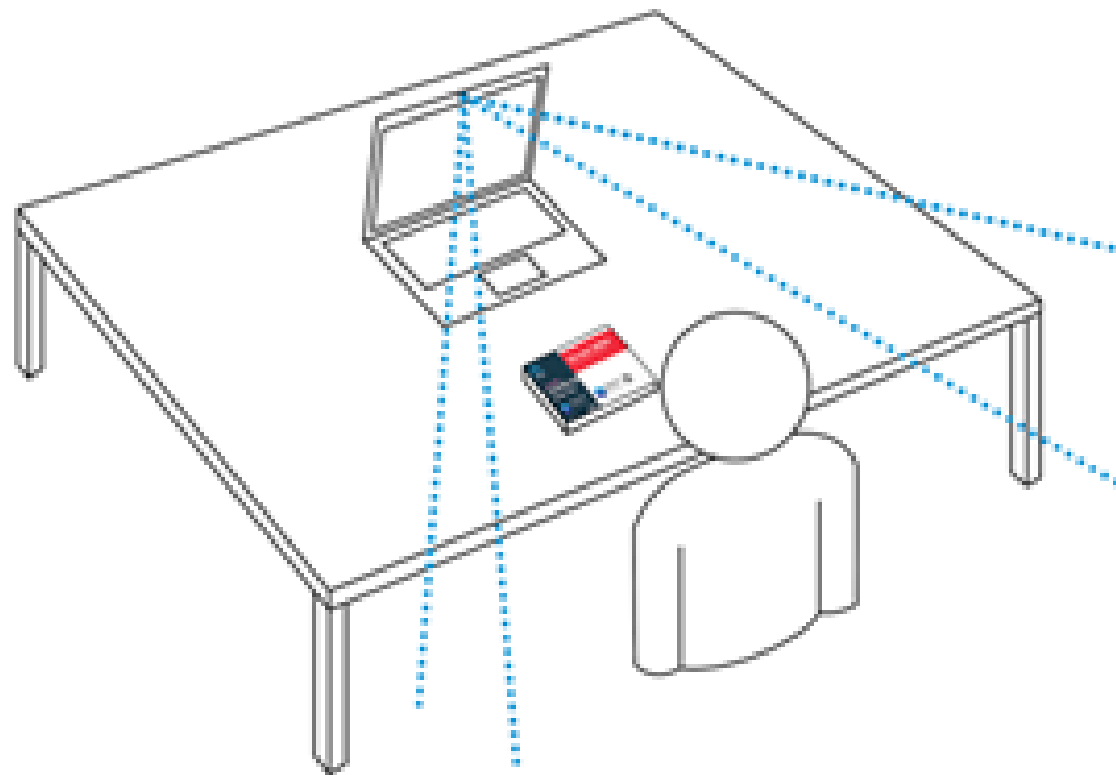
1 Swab



2 Go to ohio.emed.com and select "Start Test"

Adjust Camera Orientation

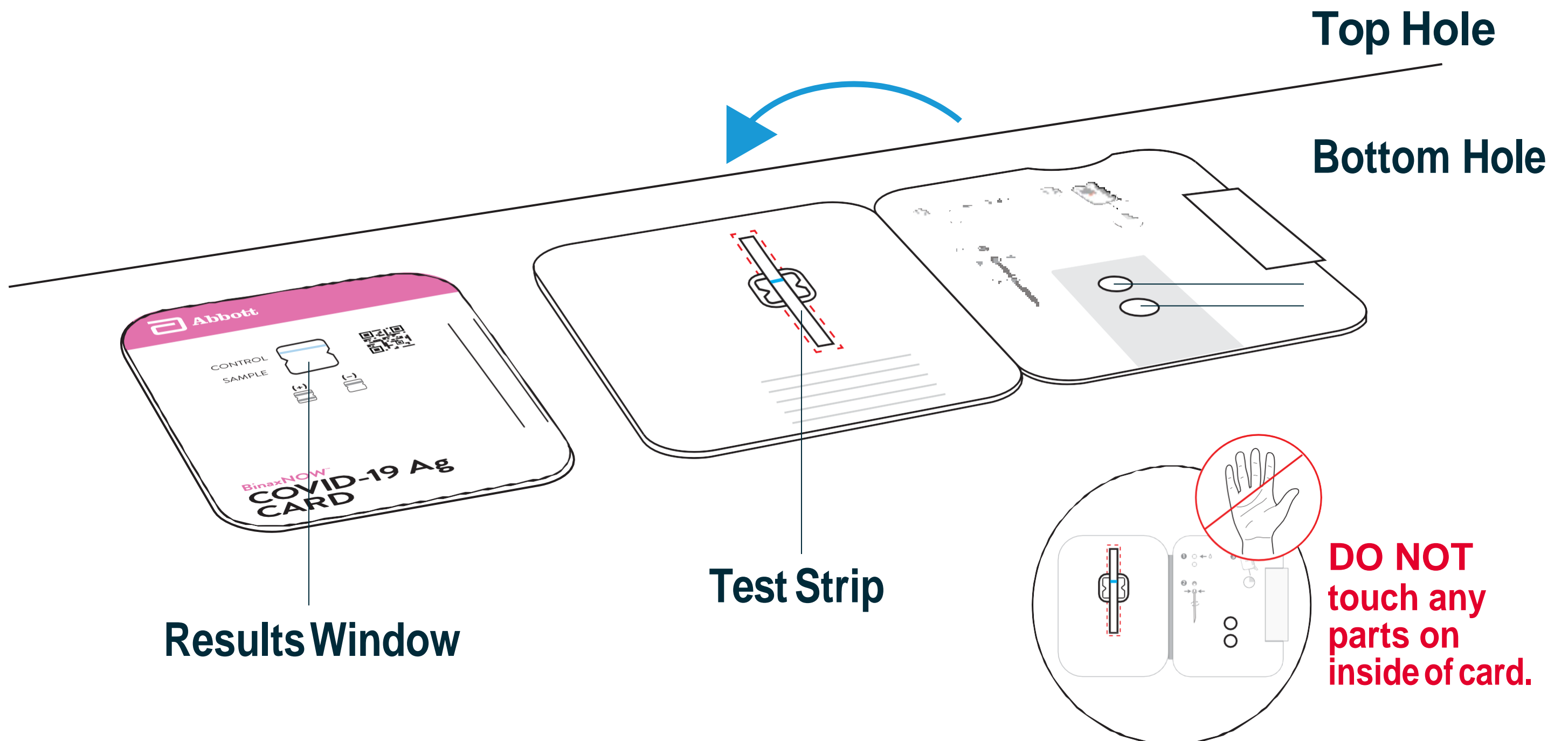
Adjust your camera to ensure both your face and the test box are in the frame.



3 Open Card



Card must stay FLAT on table for entire test.

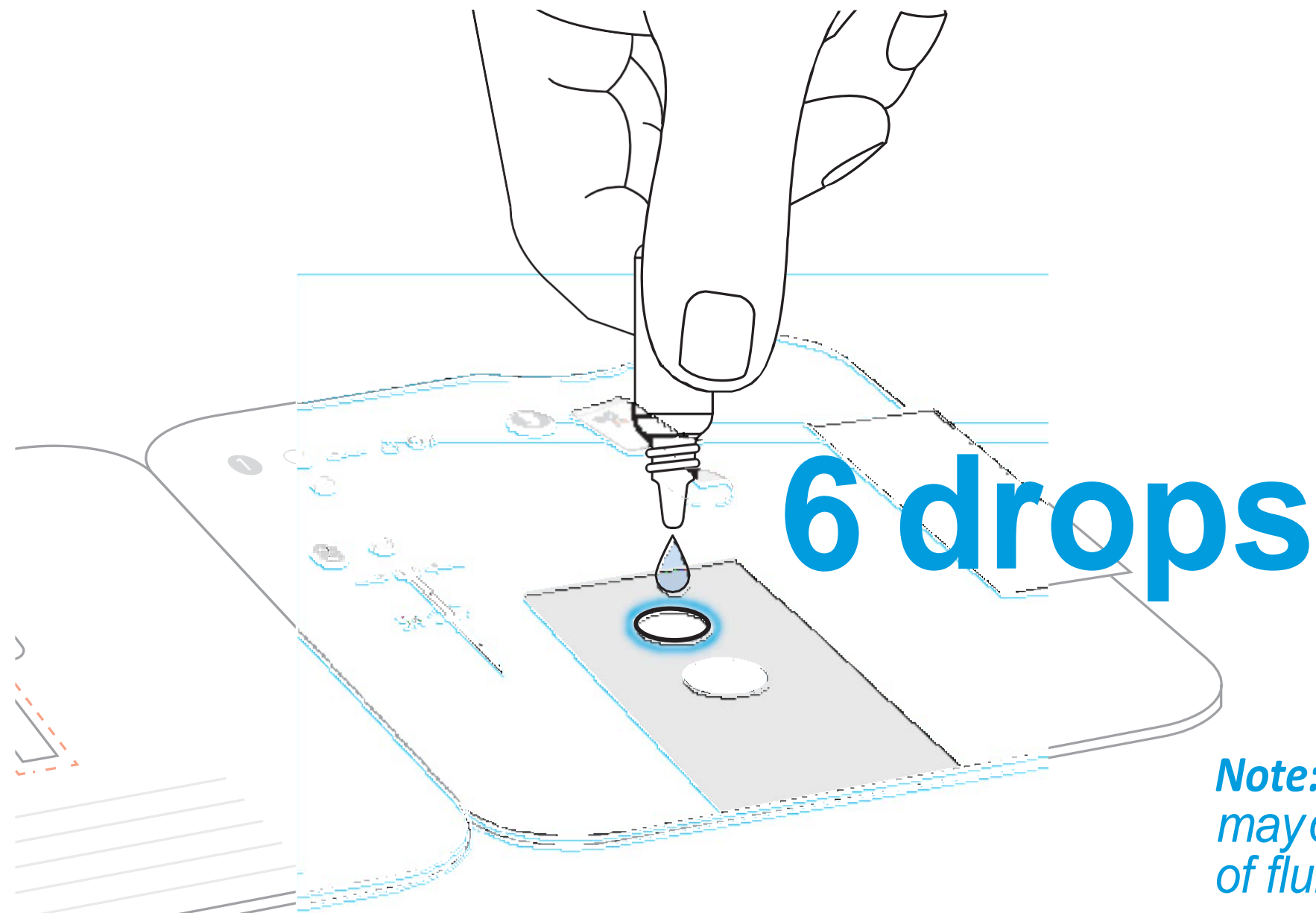


4 Apply Fluid to Top Hole

A. Removedropper
bottle cap.

B. Hold dropper bottle
straight over TOP HOLE, not
at an angle.

C. Put 6 DROPS into TOP
HOLE. Donot touch
cardwithtip.



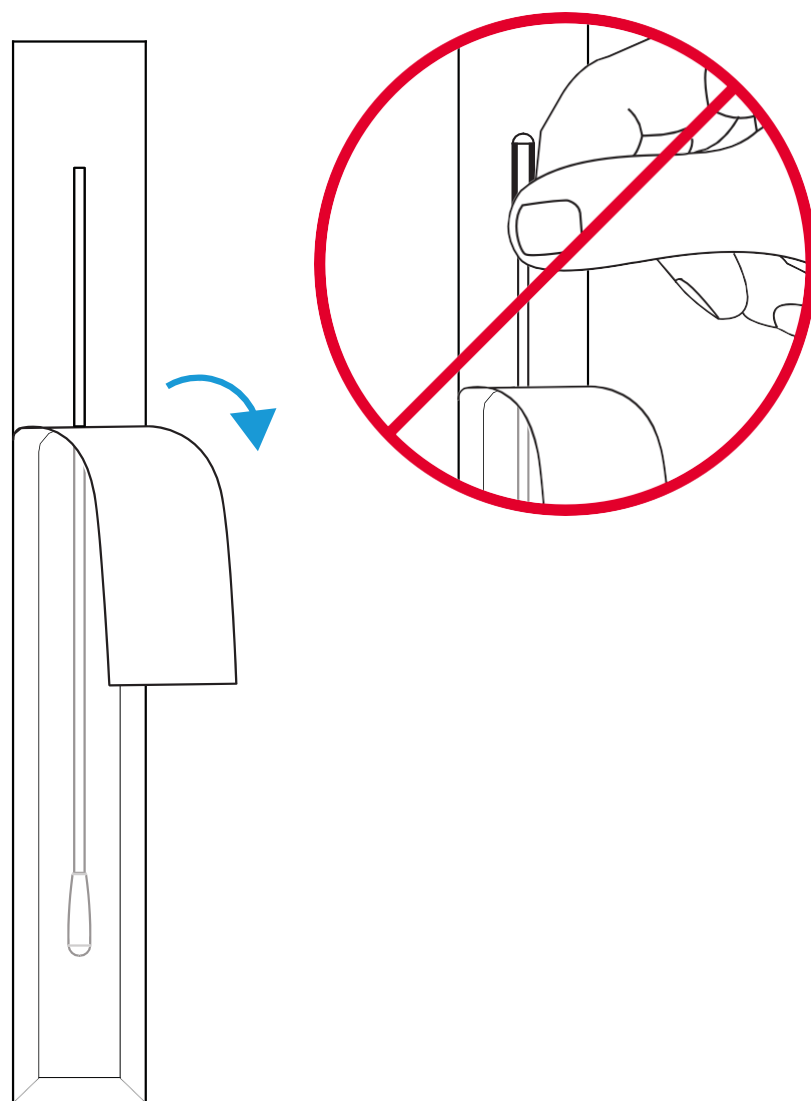
*Note: False negative results
may occur if less than 6 drops
of fluid is used.*

5 Open Swab

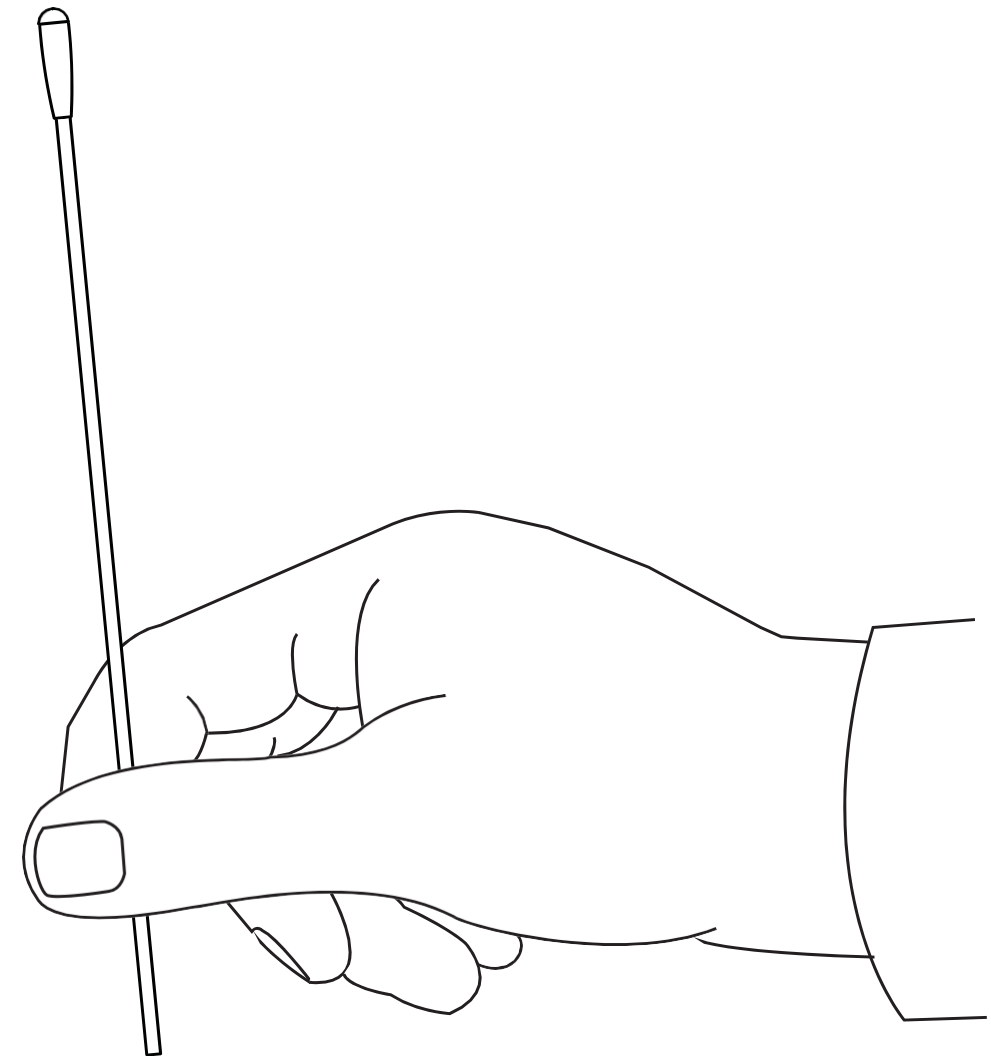


Keep fingers away from swab end.

A. Open swab package at stick end.

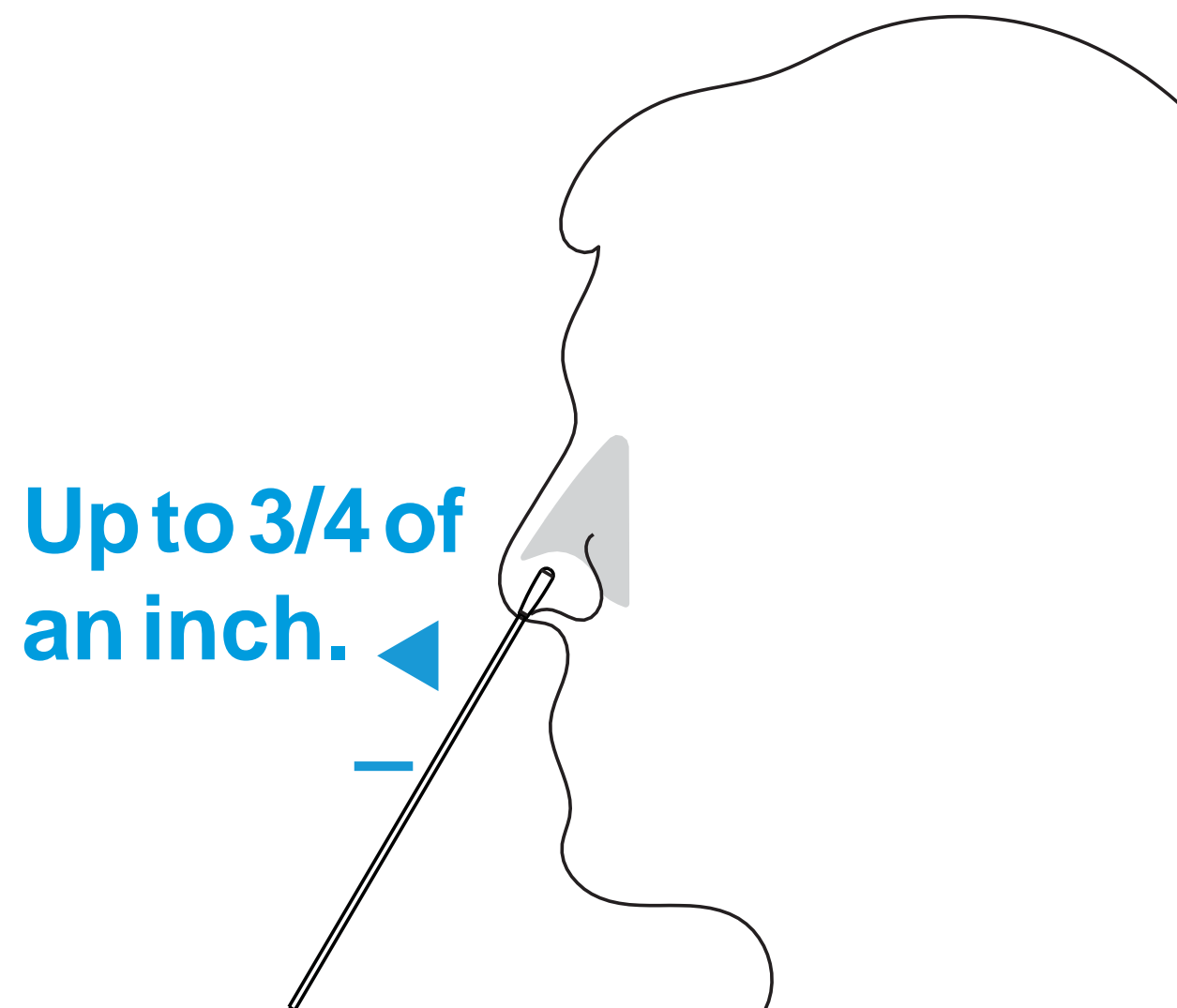


B. Take swab out.

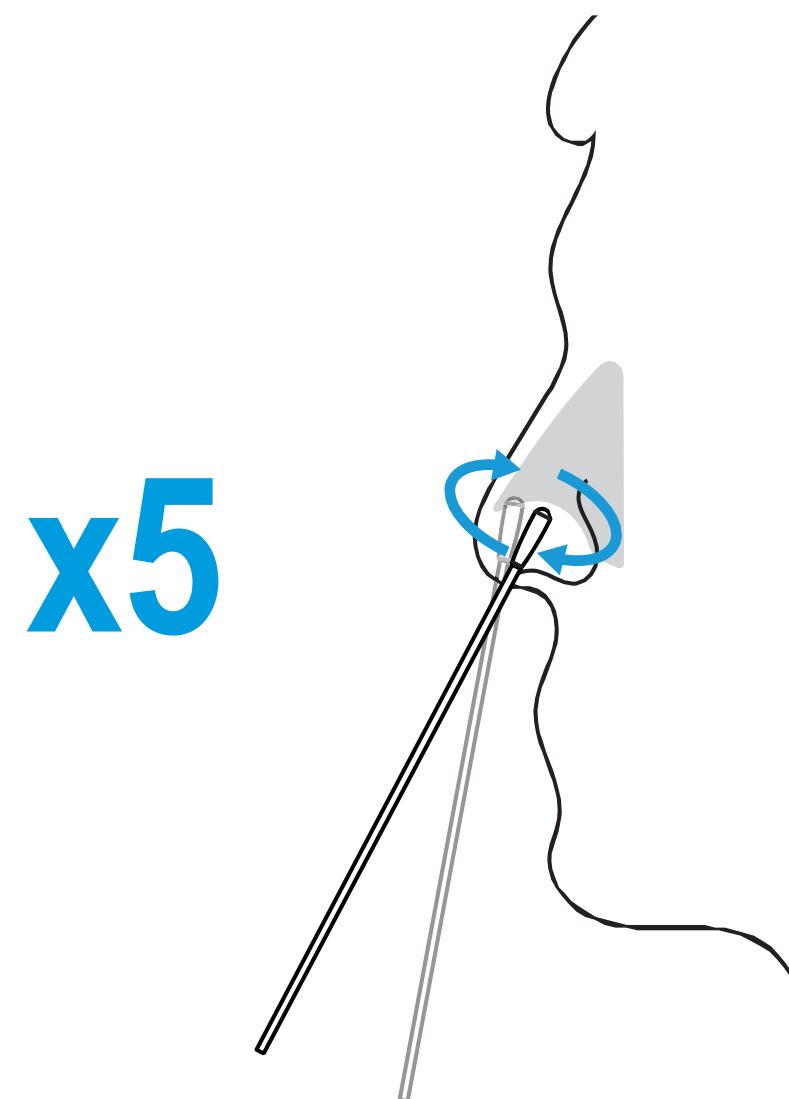


6 Swab Left Nostril

A. Insert the entire absorbent tip of the swab (usually 1/2 to 3/4 of an inch) into left nostril.



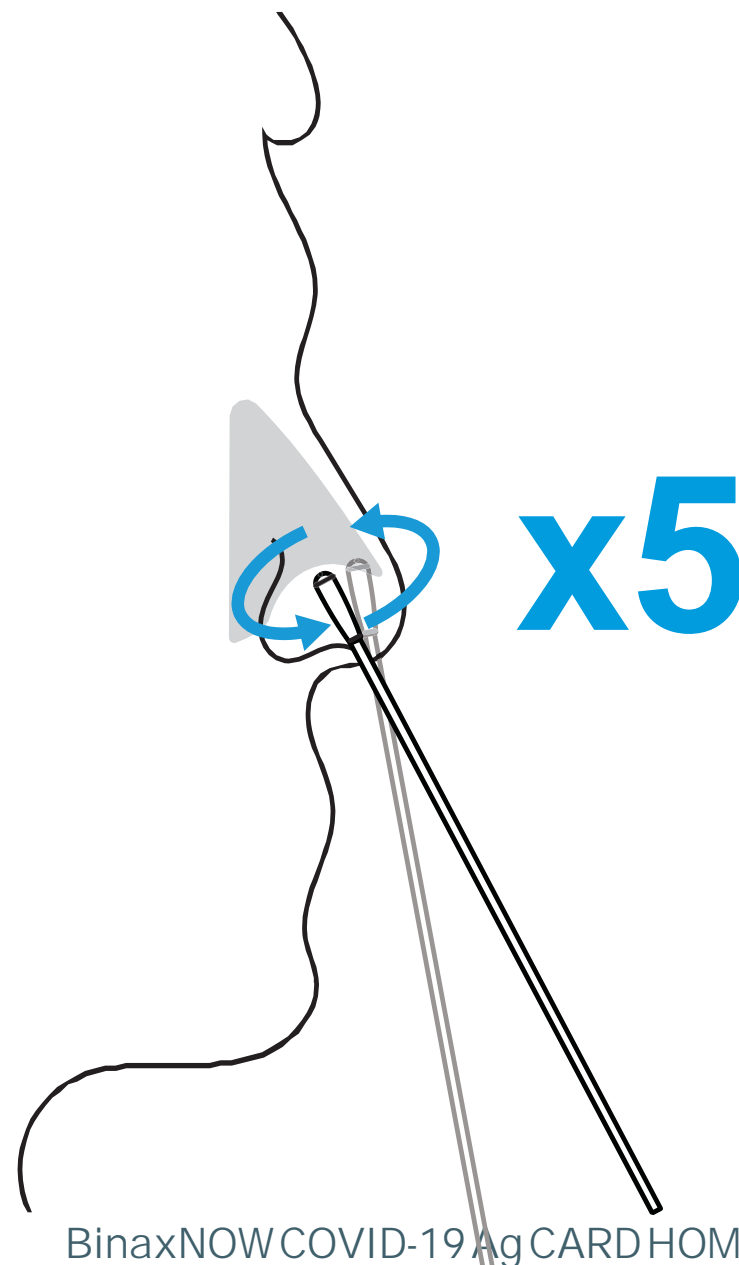
B. Firmly brush against insides of nostril in a circular motion 5 times or more for at least 15 seconds.



7 Swab Right Nostril

A. Remove swab and insert it into right nostril.

B. Firmly brush against insides of nostril in a circular motion 5 times or more for at least 15 seconds.



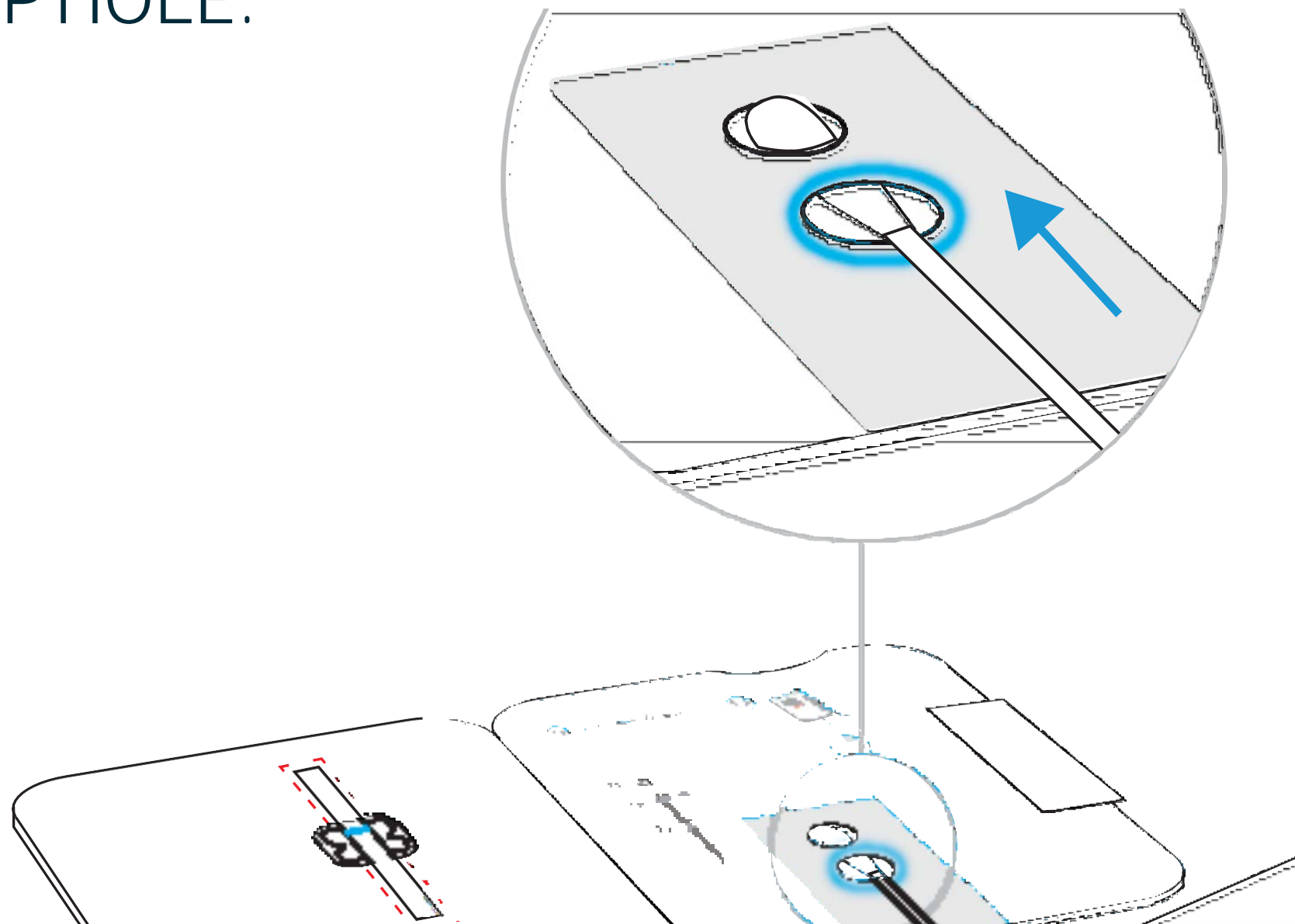
Note: False negative results may occur if the nasal swab is not properly collected.

8 Insert Swab Into Bottom Hole



Keep card FLAT on table.

Insert swab tip into BOTTOM HOLE and firmly push up until tip fills TOP HOLE.

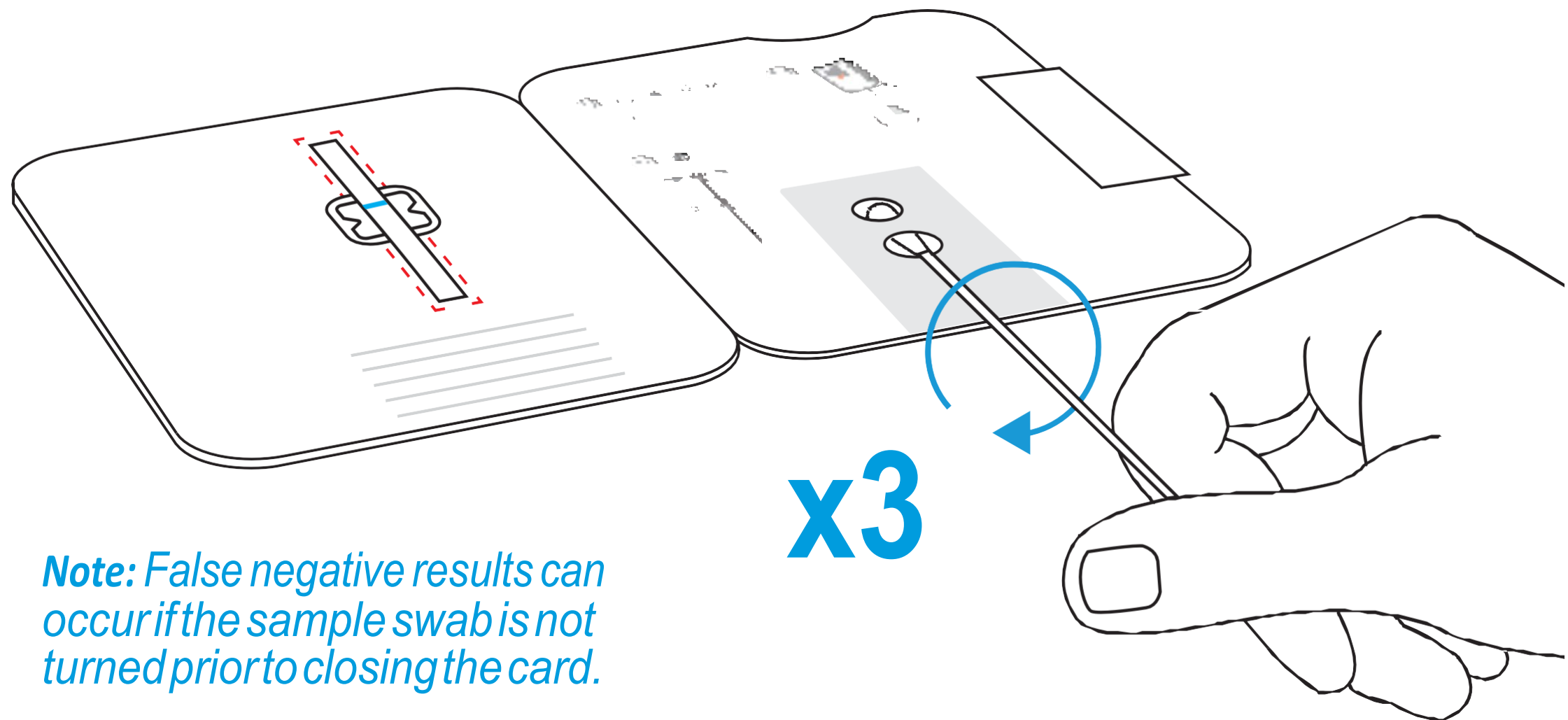


9 Turn Swab 3 Times



Keep card FLAT on table.

Turn swab to right 3 times in card and leave it in place.



Note: False negative results can occur if the sample swab is not turned prior to closing the card.

10 Peel Strip

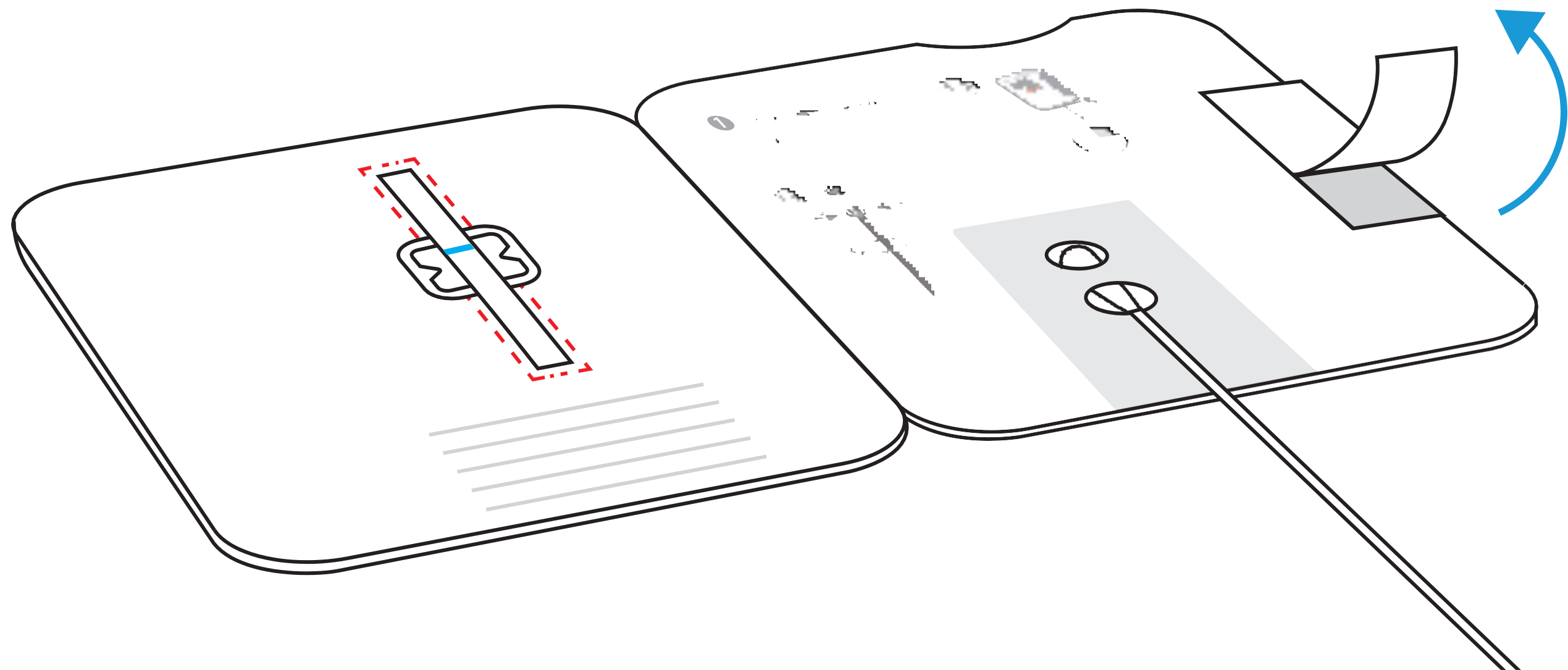


DO NOT remove swab.



Keep card FLAT on table.

Keep swab in place. Peel adhesive liner off.



11 Close Card And Seal

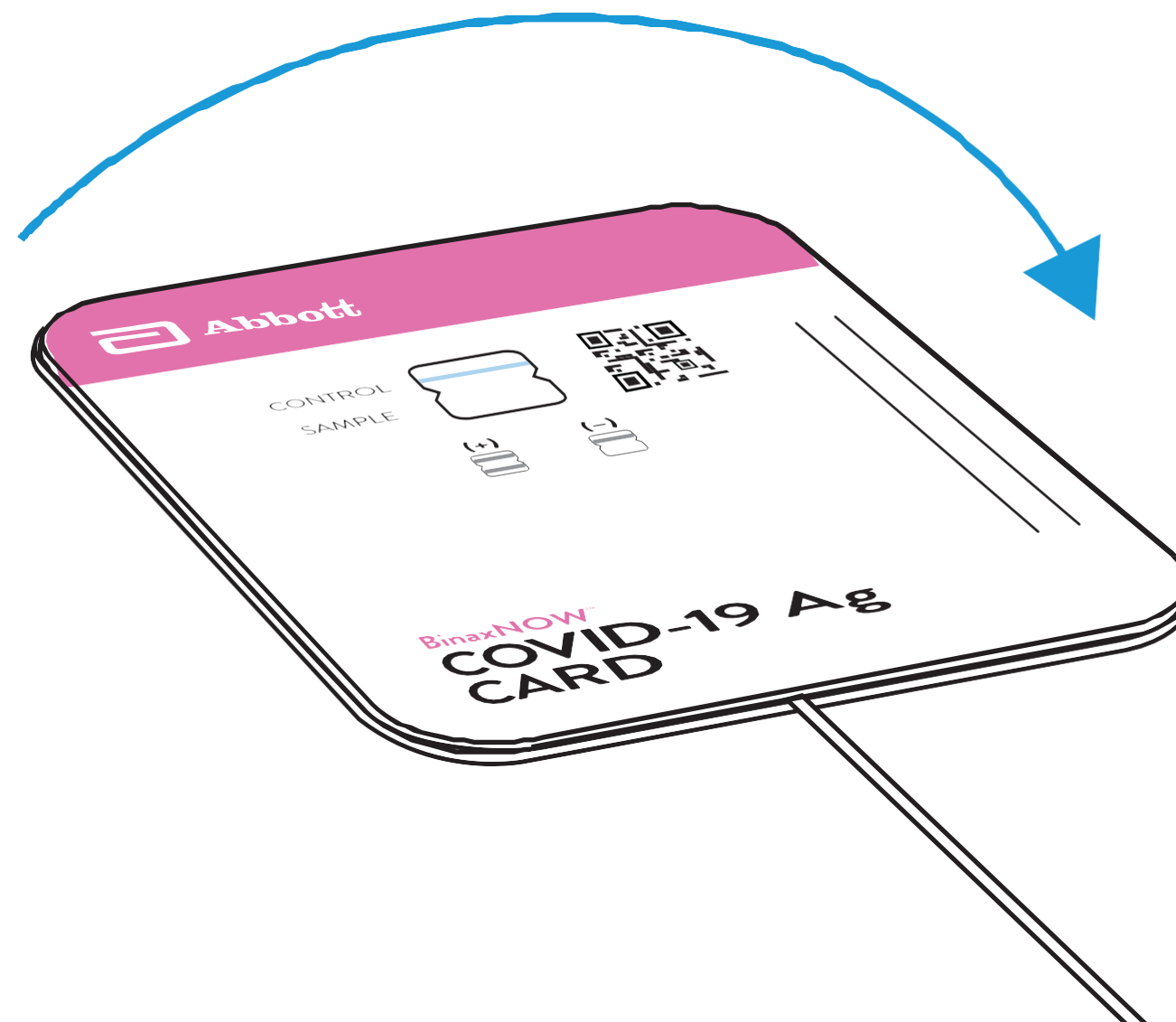


DO NOT remove swab.



Keep card FLAT on table.

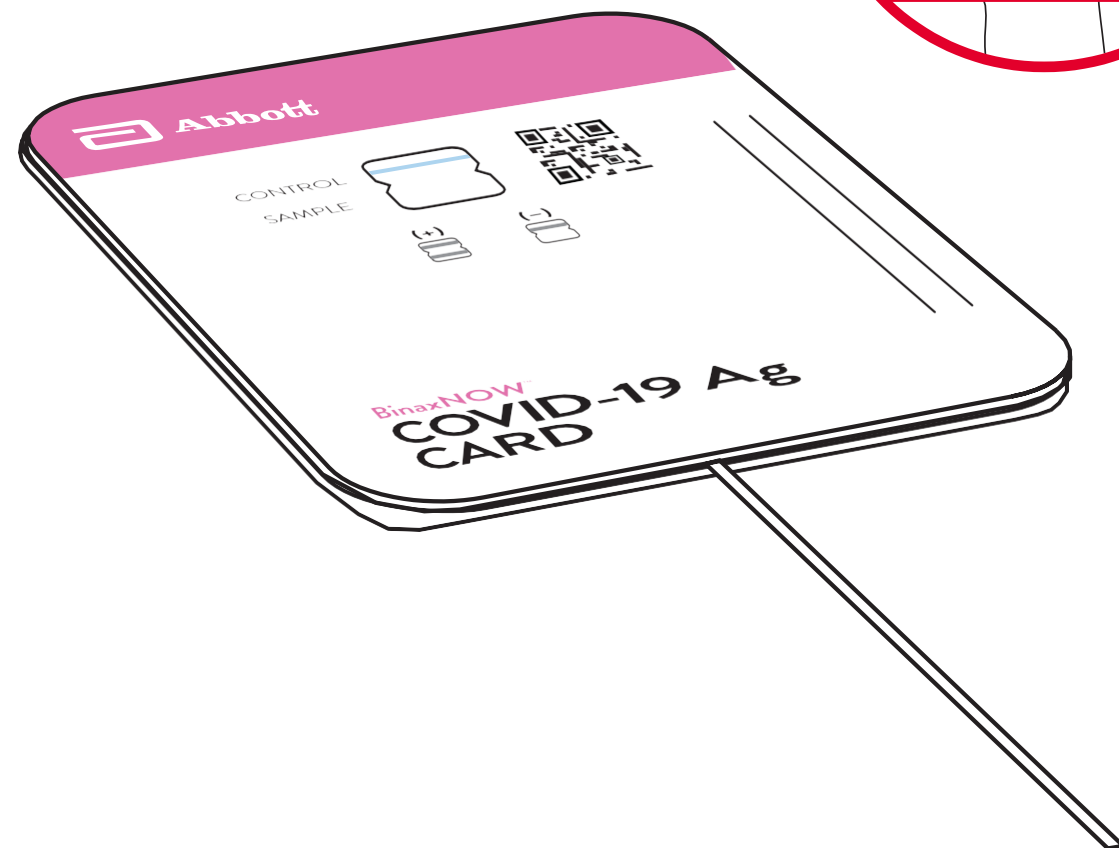
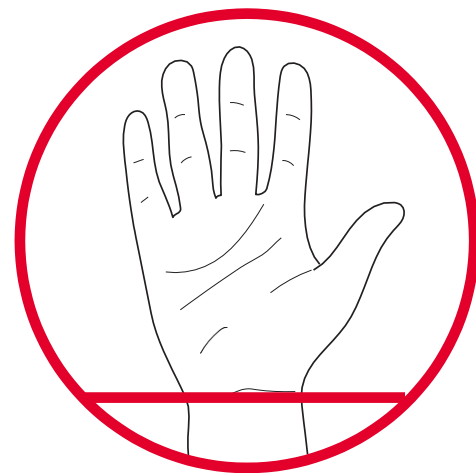
Close left side of card over swab to seal it. Keep card face up on table.



12 Wait 15 Minutes



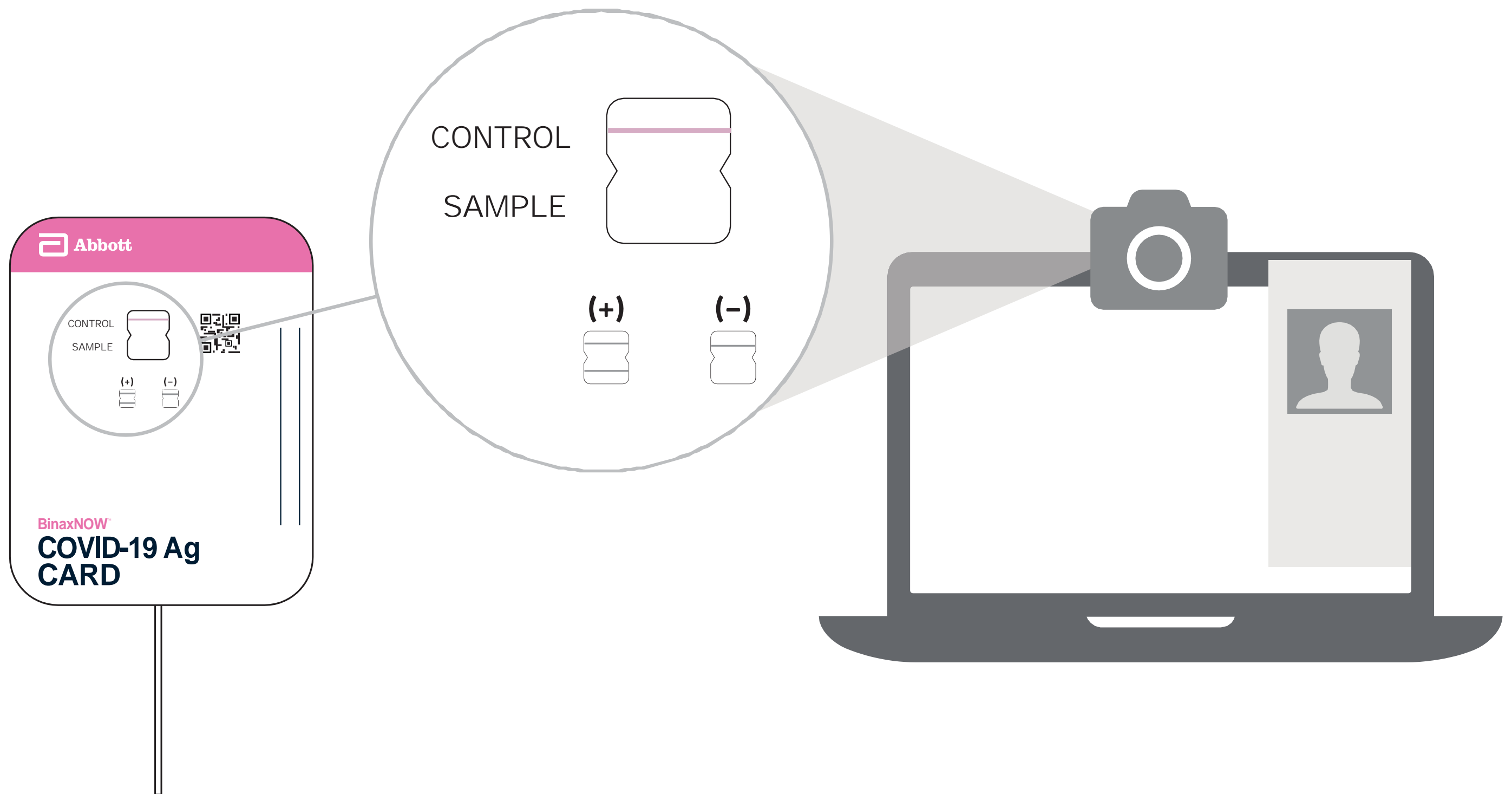
DO NOT disturb card during this time.



15:00

Note: False results can occur if the card is disturbed/moved or test results are read before 15 minutes.

13 Show Result to Your Proctor



14 Steps To Check Your Results

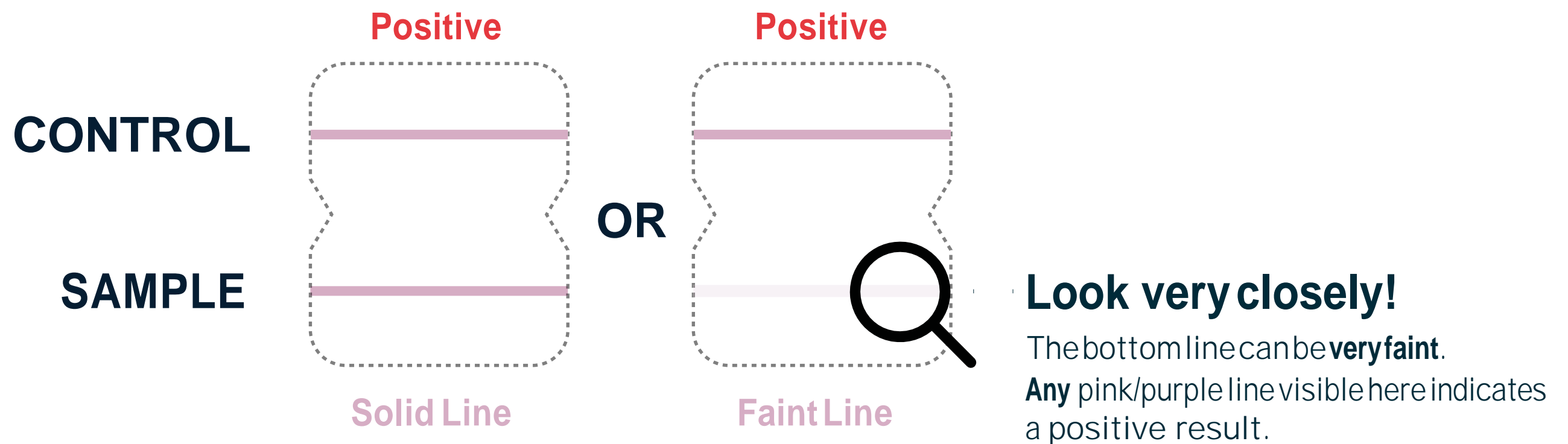
There are three types of results possible. You will be instructed how to read each type in a specific order. Follow this order with your proctor:

- 1. Check for a Positive Result**
- 2. Check for a Negative Result**
- 3. Check for an Invalid Result**

15 Check for Positive COVID-19 Result

Find result window and look carefully for two pink/purple lines in window.

- **Positive Result:** Two pink/purple lines will appear. One on the top half and one on the bottom half. **COVID-19 was detected.**



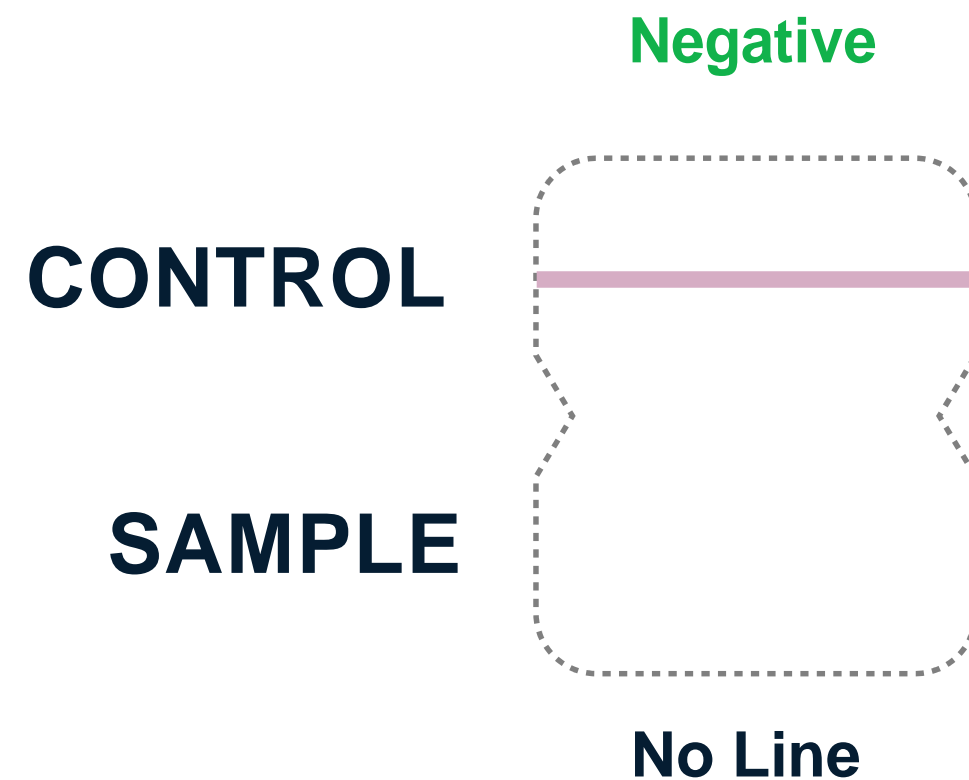
Here are photos of actual positive tests. On the right, note how faint the bottom line can get.



Check for Negative COVID-19 Result

Find result window and look for a single pink/purple line in window.

- **Negative Result:** A single pink/purple line on the top half where it says "Control." **COVID-19 was not detected.**



Check for Invalid Result



If you see any of these, the test is invalid.

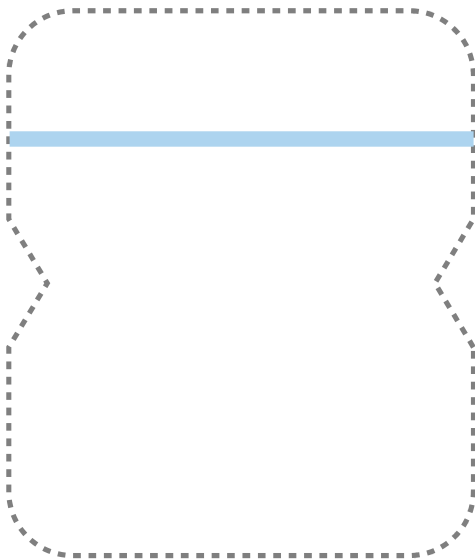
CONTROL

SAMPLE

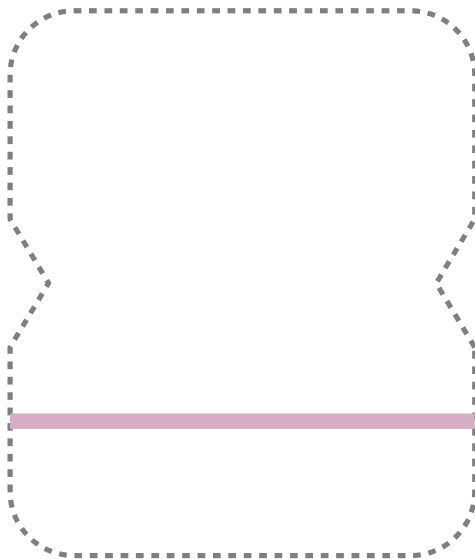
No lines seen



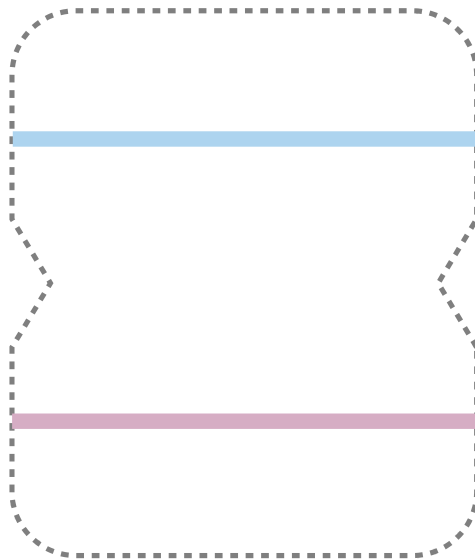
Blue control
line only



Pink/purple
sample line only



Blue control line AND
pink/purple sample line



Interpreting Test Results

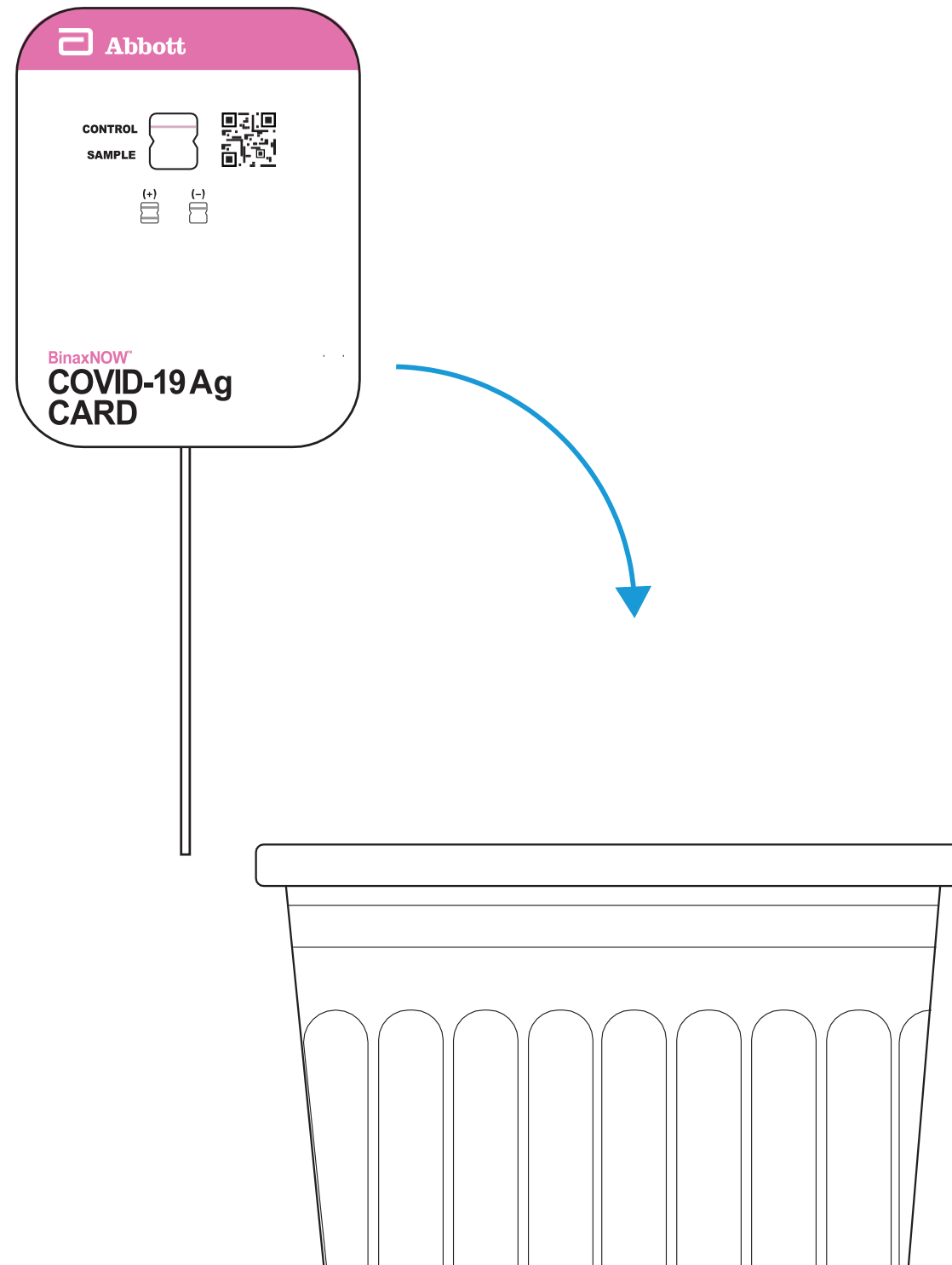
Antigen tests are generally less sensitive than PCR-based methods and their clinical performance depends on the circumstances in which they are used. The Centers for Disease Control and Prevention (CDC) have released guidance for rapid antigen testing for SARS-CoV-2. FDA and CDC guidance suggest that antigen test results should be considered in the context of clinical observation, patient history, and epidemiological information.

A positive test result when the person is symptomatic or has been exposed to COVID-19 indicates that SARS-CoV-2 antigen was detected and that the individual is very likely infected and considered a COVID-19 case. Positive individuals should be isolated per Ohio Department of Health guidance.

A positive test result for an asymptomatic person who has not been exposed has the potential to be a false positive result. In these situations, the individual with the positive test result should be isolated until confirmatory PCR testing can be performed and results returned.

For negative results, FDA guidelines suggest “it is not necessary to perform confirmatory high-sensitivity molecular tests on individuals with negative antigen tests if they are obtained during routine screening or surveillance.” However, symptomatic individuals with negative tests should be isolated until confirmatory PCR testing can be performed and results returned.

Dispose in Trash



Results Returned to NAVICA App

You can find result details under "Results" and display a NAVICA pass for seven days under "Passes"

