

Washington Local Schools

Board of Education Meeting

Superintendent Update

Capped Open Enrollment Discussion, PVA Update, Vaccine Update

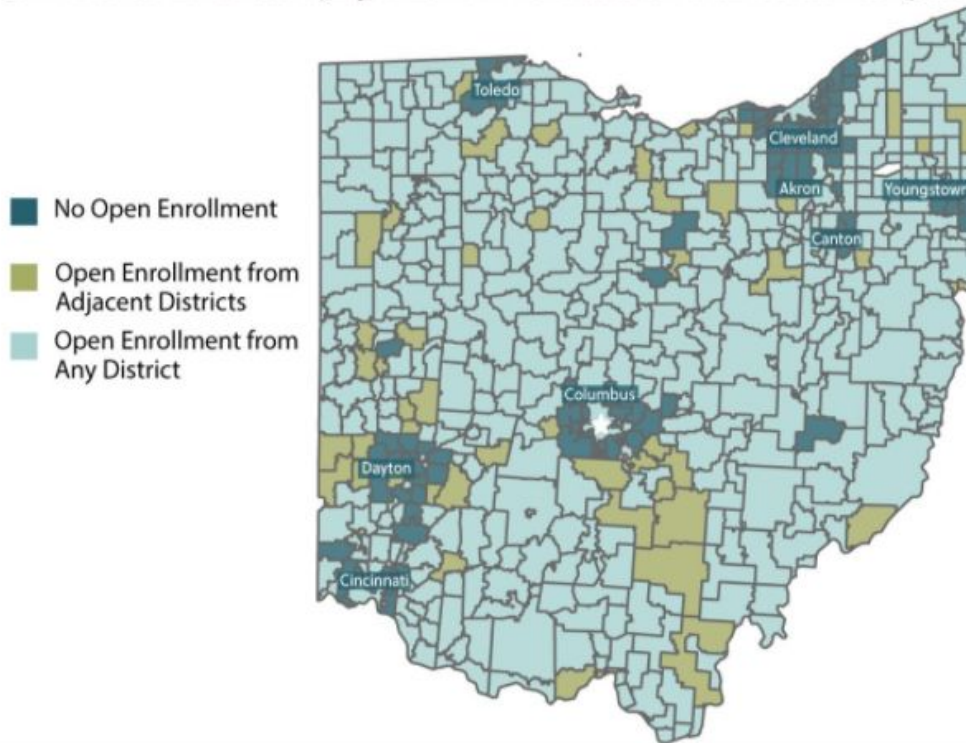
1-20-21

Why Are We Having This Discussion?

- Washington Local Schools has capped funding. This means that the state DOES NOT FUND about 2,200 of the students we currently have attending (The equivalent of every Whitmer student attending without any state funding)
- We must find a way to increase revenue without increasing taxes. Our Taxpayers depend on us to do so.
- Over 6% of our annual budget goes to other schools through their Open Enrollment policies, EdChoice, Jon Peterson Scholarship, Charter Schools, etc.
- Over 84% of our budget is personnel. That doesn't leave a lot of room to "cut expenses" without cutting programming
- We want to preserve the excellent teachers, staff and programs Washington Local provides.

Who Else Does This?

Ohio school districts by open-enrollment status: 2017-2018 school year



83% of Ohio Districts offer Open Enrollment either to adjacent districts or to students from any Ohio District.

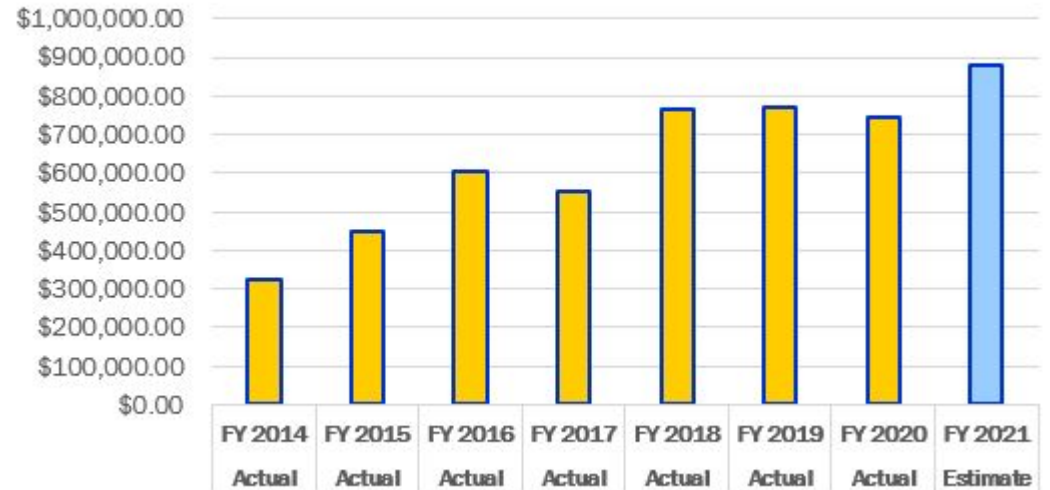
In 2021, Washington Local Schools will send an estimated \$879,000 to local districts that have an Open Enrollment Policy.

Which Districts Benefit from Open Enrollment?

FY 21 Est. Breakdown by School District

Toledo City	\$ 692,586.31
Oregon City	\$ 45,099.44
Lake Local	\$ 30,822.40
Northwood	\$ 22,635.20
Rossford	\$ 22,514.80
Pike-Delta-York	\$ 12,040.00
Otsego	\$ 12,040.00
Lake Local /Penta JVSD	\$ 11,197.20
Penta JVSD	\$ 6,515.49
Gibsonburg	\$ 6,020.00
Wauseon	\$ 6,020.00
Swanton	\$ 6,020.00
Western-Reserve	\$ 4,695.60
Fremont City	\$ 1,384.60
TOTAL	\$879,591.04

Cost of Open Enrollment



Who Could Attend with Capped Open Enrollment?

- Each district determines the number of students it can accept at each grade level or school.
- Currently, there is *no additional open capacity at elementary schools*.
- Students who have been suspended or expelled for 10 or more days either in the previous or current school year can be denied entrance (R.C. 33198(C)(4)).
- Priority Consideration for Applicants can be established as long as it is non-discriminatory.
- Washington Local can establish Administrative Guidelines to provide a fair and equitable application process.

What Priority Guidelines will Washington Local Consider?

1. Parent/Guardian is a Washington Local Schools Staff Member
2. Student was enrolled the previous year
3. Sibling is currently enrolled
4. Grandparents are residents in the district
5. Parent/Guardian is a graduate of Whitmer High School
6. Parent/Guardian works within the Washington Local Schools boundaries
7. Parent/Guardian owns property within the Washington Local Schools boundaries
8. The order in which applications were received

*The superintendent or designee would convene a committee to review applications. The committee would include at least one representative from each school level (elementary, junior high, high school) for which applications are received.

What Priority Guidelines will Washington Local Consider?

- Resident students have first priority and previously enrolled non-resident students have preference over first-time applicants.
- District capacity limits by grade level, school building, or educational program will be considered.
- If the student has a record of unexcused absences or truancy, including but not limited to habitual truancy, the applicant may be rejected.
- The Superintendent/designee shall examine the education records of any non-resident student to ensure the student has an appropriate number of credits and be age-appropriate for the grade level in which they are seeking to enroll.
- Any previous fraudulent enrollment could disqualify an applicant for consideration.
- Other guidelines will be established after consulting with Counsel.

What Will This Do To Class Size?

- There are 43 employees' children who currently attend Washington Local Schools.
- If the board added 30- 40 Ohio non-resident students in each grade 9-12, it could potentially add 1-2 students per core class.
- Funding for the 43 students of employees and 30-40 capped open enrollment students per grade could balance the dollars currently sent to other districts.

Back to our WHY?

The Washington Local Schools Board of Education is committed to continuing to find ways to fund our schools by not returning to taxpayers for additional levies

Sending 6% of our local taxpayer dollars to other districts with nothing in return in is unsustainable

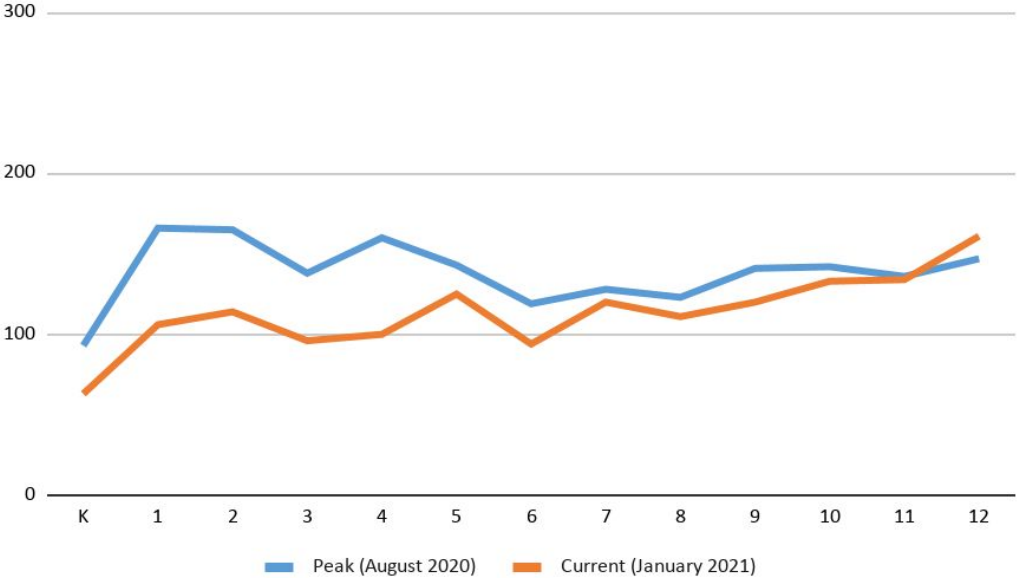
We have some open capacity in the upper grades

We believe the established priorities will allow Whitmer families to return to Whitmer, will assist grandparents who are raising grandchildren, and provide students who want to be a part of the Washington Local Schools culture

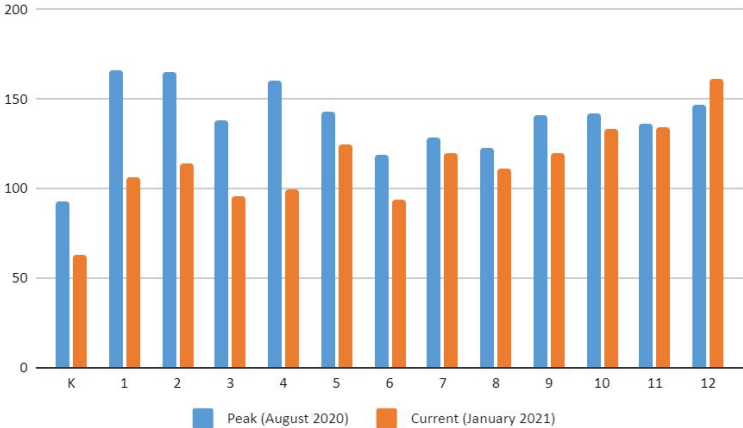
The Board of Education will annually review data and policy on Capped Open Enrollment

PVA Update

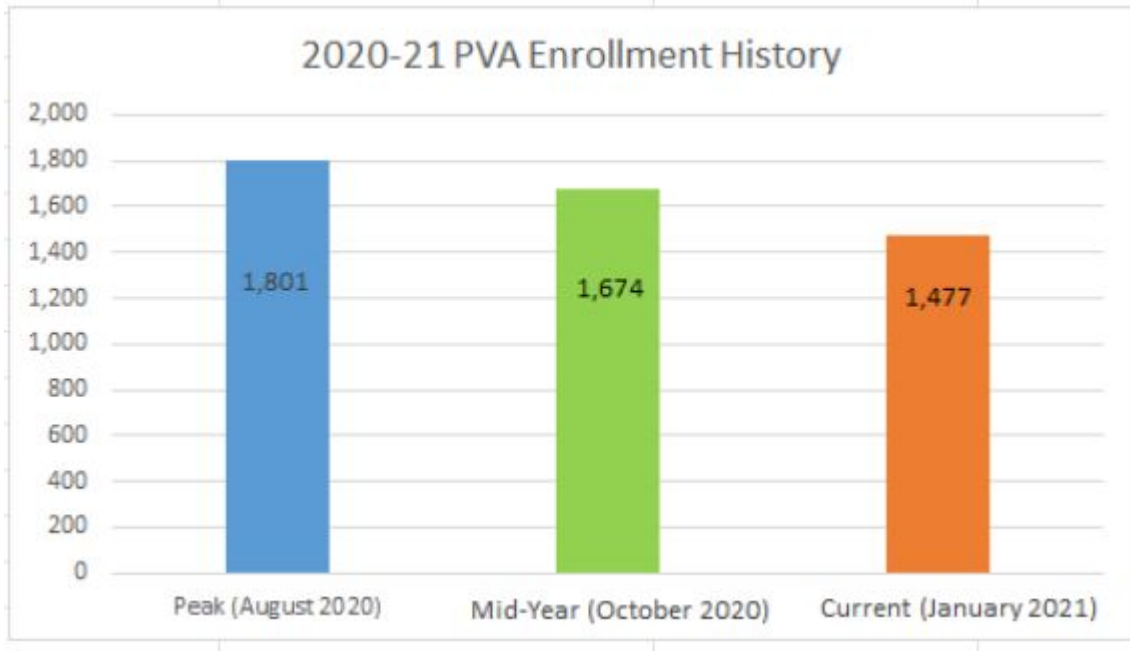
2020-21 PVA Enrollment History By Grade



2020-21 PVA Enrollment History By Grade



PVA Update



354 Students have returned to In-Person Instruction

167 Students Have Either Moved From In-Person to Virtual or are New to PVA

Vaccine Update

When Something Goes Wrong
Just Yell,
“Plot Twist,”
and Pour All Your Energy into
the Next Plan.