

September 25, 2020



News from the Logan Elm Local School District

Visit the Logan Elm District website

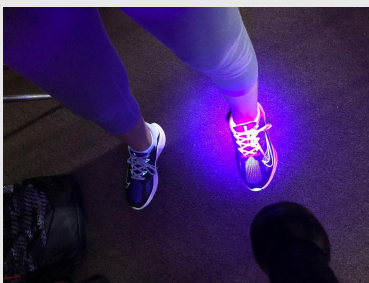
Return to Regular Calendar for "In Person" Students

On Wednesday, September 30th, all Logan Elm "in person" students will return to the typical five days per week schedule. Precautions to prevent the spread of Covid will still be taken, such as wearing masks, traveling one direction in hallways and maintaining 3'-6' of social distancing where possible. The 2020-2021 school calendar may be viewed [here](#).

Remote learning will continue for those students who chose that option this year.

A new breakfast and lunch menu for October 2020-May 2021 has been released and can be found [here](#). All Logan Elm students may receive breakfast and lunch at no cost through December 2020 due to a change in policy by the USDA. Families who meet income requirements should still complete the application in order to have school fees waived and to ensure benefits are in place in January 2021. Applications are available by visiting our Food Service webpage or by clicking [here](#).

Washington Elementary 4th Grade is "Glowing" with Science



The fourth grade at Washington has been studying bioluminescence as part of their unit on the scientific method. Student have been examining how bioluminescence benefits animals, asking key questions, making observations, and creating hypotheses about this unusual adaptation.

Pickaway Elementary 4th Grade Scientists

The fourth graders at Pickaway Elementary spent the first few weeks of the new school year learning what it means to Be a Scientist by conducting several small scientific investigations. They used the experiments to learn about the steps that scientists use to explore the world around them. This experiment involved fidget spinners and was a big hit with the fourth graders. They are now starting to see themselves as scientists as they ask questions, make predictions, and conduct investigations.



Pickaway Elementary 3rd Grade Heroes

Third grade students at Pickaway have been learning about



character traits and heroes. In reading class the students discussed what a character trait is. They learned how to pay close attention to what characters do and say in a story to figure out specific traits. After this, the students were given the challenge to create an acrostic character trait poem about themselves. Many of the students' poems gave them a boost of confidence as they revealed positive traits about themselves. On Patriot Day, students discussed what character traits make a hero. They were then given a star to tell who their hero was and why, or they could list the character traits that they thought were important to heroes.

Laurelville Preschool Finds New Ways to Play & Learn

Laurelville Preschool classes have found a creative way to ensure students obey social distancing recommendations. While face masks are not required for preschool students, it is recommended that they maintain social distancing in the classroom.

Ashley Vanderpool uses hula hoops during play time as a way to remind student to stay in their own space.



LEHS Classes Recycle Scrap Metal to Fund Scholarship

Mr. Gary Mitchel's classes in the Industrial Arts Department of Logan Elm High School are collecting scrap metal to be recycled. Proceeds from the sale of the materials are used to fund a scholarship for a graduating senior each year.

Donations of scrap metal may be left beside the recycling bin located in front of the Ag/Metals building near the athletic stadium. For more information, contact Gary Mitchel at gary.mitchel@loganelm.org

Thank You!



Thank you for reading the Logan Elm Schools e-Newsletter! We appreciate your interest in the students and activities of all Logan Elm schools!

Reminder from our Transportation Department: With all "in person" students returning to school, our bus routes will be adjusted beginning September 30th. Pick up and drop off times may be slightly different. Please have your student ready a few minutes early in the mornings and be watching for the bus.

Logan Elm Local Schools
9579 Tarlton Road, Circleville OH 43113
740-474-7501

STAY CONNECTED...Follow us on Twitter @loganelmschools

