

prospect heights school district 23

5.11.2022

master planning



agenda

- Introduction
- Review of Process
- Developing the Optimum Proposal
- Four Need Areas
- Existing Needs and Challenges
- Review of Concept Plan
- Program Enhancements
- Community
- Safety Enhancements
- Facility Maintenance
- Costs and Considerations
- Project Schedule
- Next Steps
- Closing / Q & A

introduction

stakeholder input to date

2.14.2022	Kickoff Meeting, Data Gathering, Building Tour
2.23.2022	ELE Focus Group Meeting
2.24.2022	BOE Meeting, Review Process
3.1.2022	Tour - D26 - Early Learning Center
3.7.2022	Tour - D25 - Greenbrier Early Learning Center
3.10.2022	Administration Meeting, Review initial concepts
3.17.2022	Tour - D59 - Early Learning Center
3.29.2022	ELE Presentation and Discussion
4.4.2022	ELE Focus Group Meeting
4.26.2022	Administration Meeting, Review preliminary budgets and renderings



developing the optimum proposal

- **Assemble a team** of educators, architects, construction experts, public engagement specialists and public opinion research
- **Involve your taxpayers** every step of the way and incorporate their feedback
- **Expand the focus** beyond EC/K to include safety, security, energy efficiency, ADA accessibility, extending the useful life of existing facilities, improving hands-on learning, leveraging instructional technology, and more

developing the optimum proposal

- Focus on both “the what” and “the why”
- Let the community know the District has skin in the game
- Potential referendum dates

four need areas

- Program Enhancement
- Community Connection
- Safety & Security
- Facility Maintenance

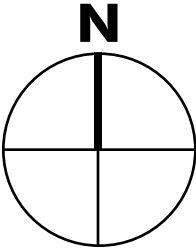
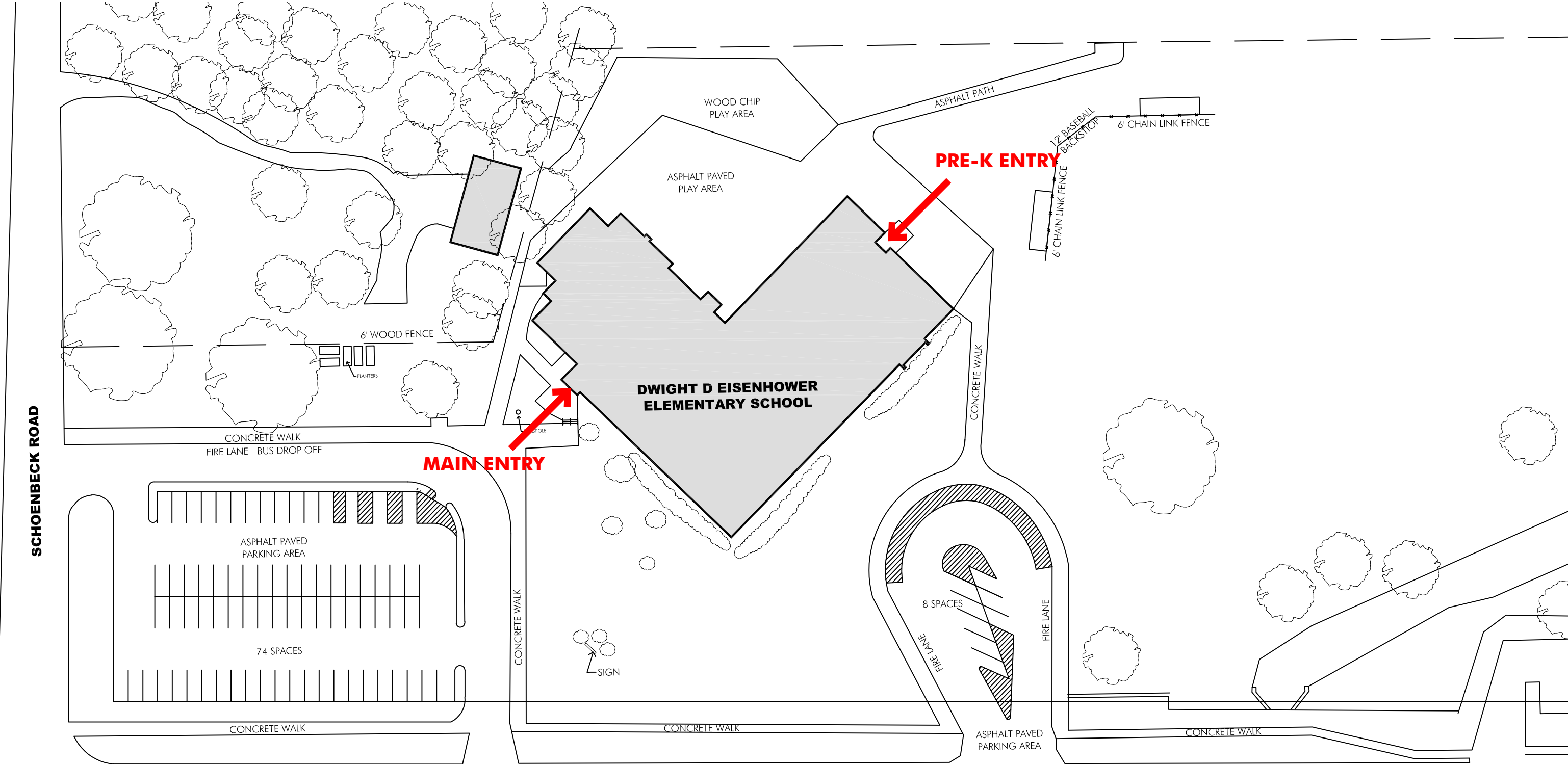
existing site plan - ross, sullivan, grodsky & macarthur



existing conditions - building envelope challenges



existing site plan - eisenhower elementary school



N

The floor plan shows the second floor of a school building. The layout is as follows:

- Top Section:** Classroom 116, Classroom 114 (Bi-lingual Full-day K), Classroom 110, Classroom 107, Classroom 104 (ECE Special Ed.), Classroom 103 (ECE).
- Right Section:** Learning Center 115, Computer Lab 119, Office/Workroom 117, Small Group 111, Small Group 109, Mech Room 108, Small Group 106 (Pull-out K-1), Classroom 104 (ECE Special Ed.), Classroom 103 (ECE).
- Center Section:** Corridor 1, Vest 1, Storage 120, Small Group 113, Office/Workroom 117, Small Group 111, Mech Room 108, Classroom 107, Small Group 109, Mech Room 108, Classroom 107, Small Group 106 (Pull-out K-1), Classroom 104 (ECE Special Ed.), Classroom 103 (ECE).
- Bottom Section:** Classroom 101, Classroom 102 (Full day ECE), Classroom 103 (ECE).
- Left Section:** Staff Lounge/Workroom 206, Music 205, Mechanical Room 207, Nurse 202, Office 200, Principal 204, Conference Room 203, Classroom 101, Classroom 102 (Full day ECE), Classroom 103 (ECE).
- Central Corridors:** Corridor 4, Corridor 3, Corridor 2, Corridor 1, Corridor 7, Corridor 6, Corridor 5.
- Other Rooms:** Arts 100, Stor. 100C, Stor. 100D, Stor. 100A, Stor. 100B, Cust. 124, Girls 123, Boys 122, Boiler Room 105, Mech Room 112A, Mech Room 112, Mech Room 113, Mech Room 108, Mech Room 107, Mech Room 106, Mech Room 105, Mech Room 104, Mech Room 103.

meetings.

ce room.

11



first floor concept plan - eisenhower elementary school



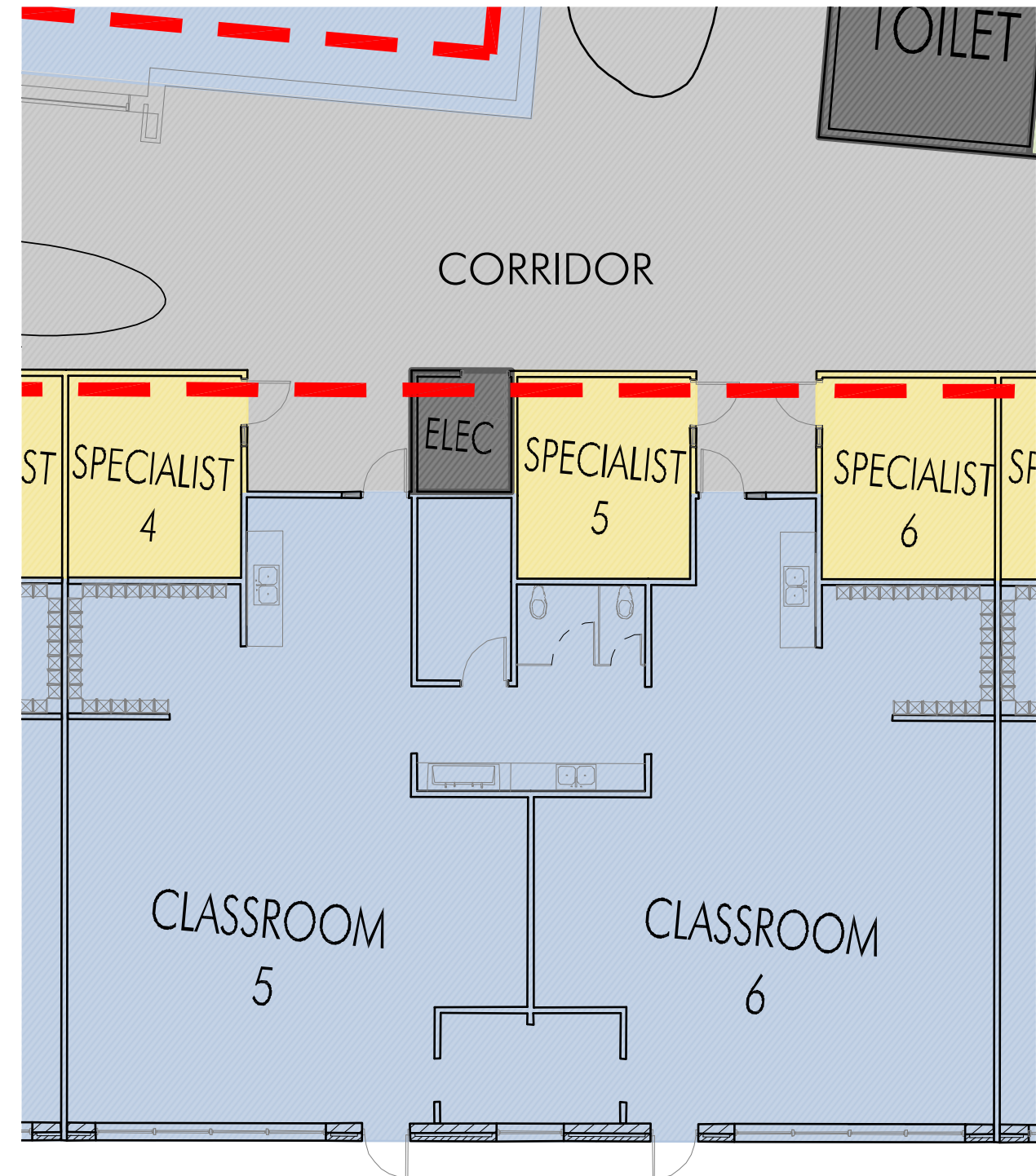
Pros

- Addresses shortage of specialist and office.
- Library space is returned to Library programming and a strong connection is made with the ELE addition.
- Library becomes the “heart” of the building.
- ELE entry is located in the front of the building, close to parking and at the end of a potential drop-off loop.
- M.P. space is close to fields and outdoor play.
- High volume circulation lets natural light into the center of the addition.
- 2 of the 8 classrooms could easily be shifted to a later phase.
- Allows for expansion of future classrooms.
- New parking loop could be extended further east.
- Existing classrooms have direct path to play fields and playgrounds.
- Opportunity to have indoor parent waiting area.
- Administration and nurse are relocated and expanded at new main entry.

Cons

- Baseball field is disrupted

program enhancements



interior renderings - library/commons

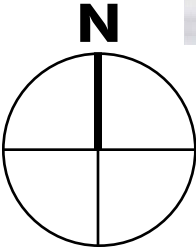
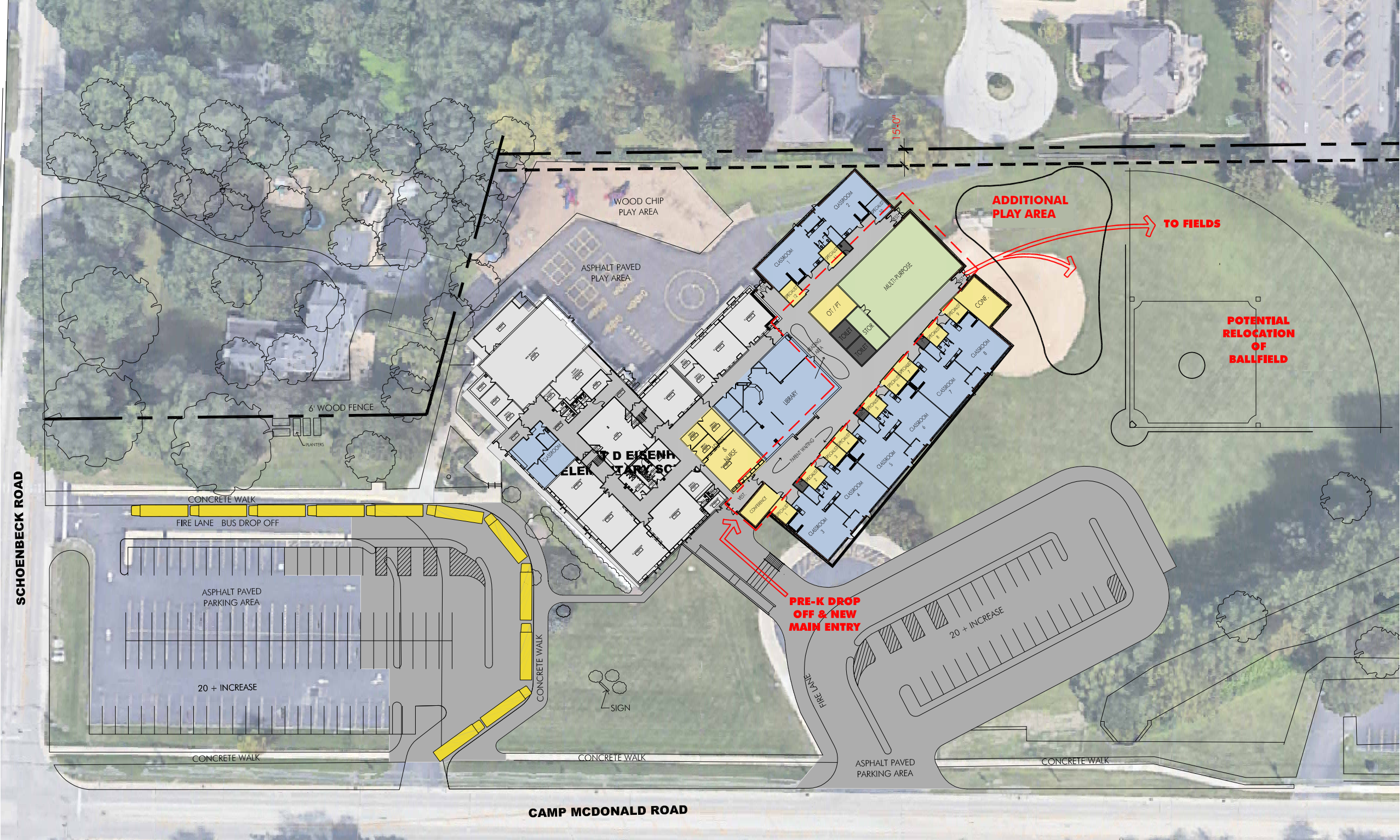


View looking toward
New Main Entry



View looking from spill-out
commons area through
existing Library

community enhancements



concept rendering - eisenhower elementary school



concept rendering - eisenhower elementary school

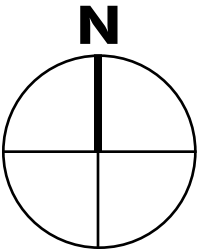


concept rendering - eisenhower elementary school





Community Gym Option = approx. 33,800 sq.ft.
(roughly 7,150 sq.ft. larger)



floor plan - Community Gym Option

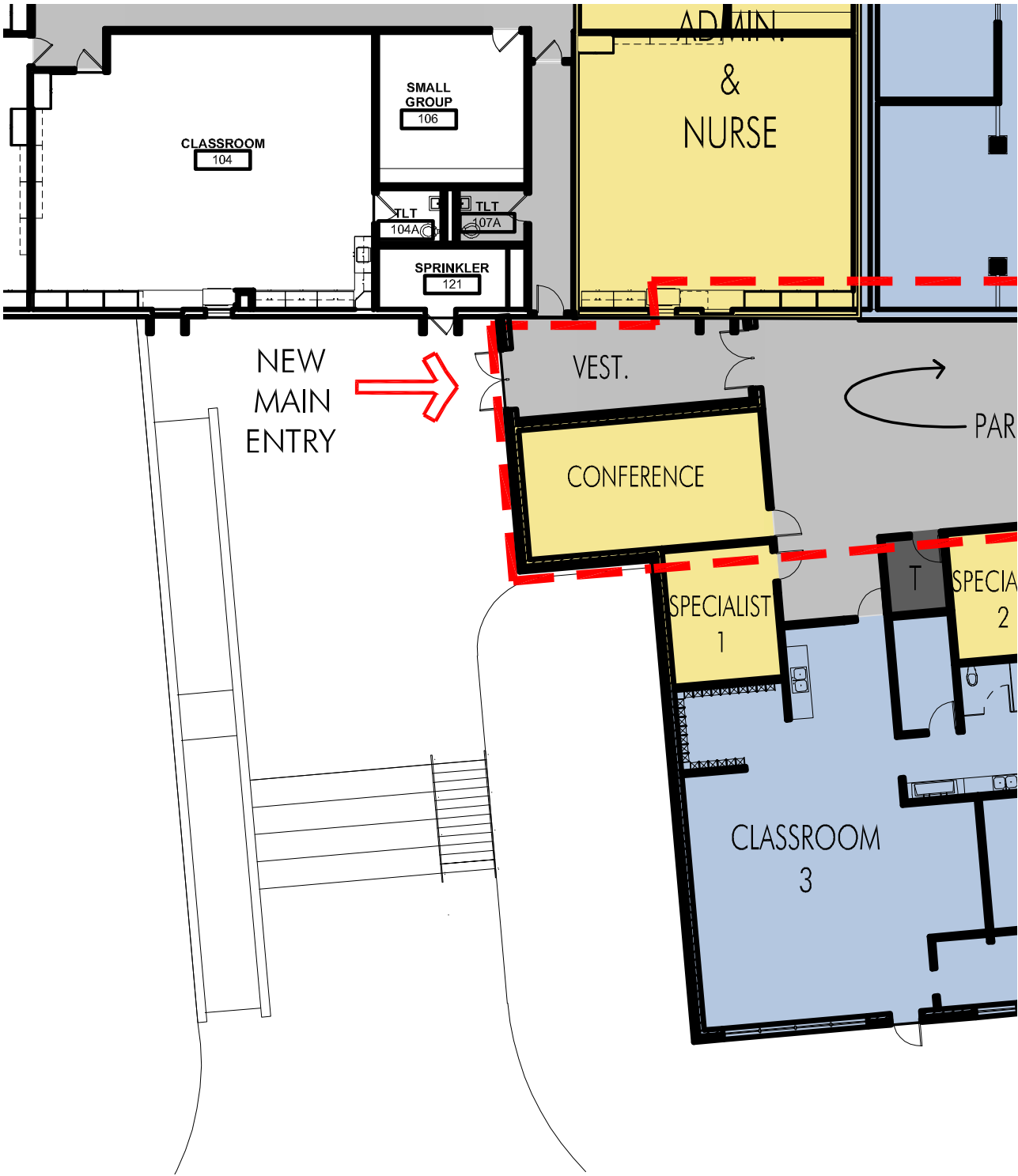


safety enhancements

- Parking Lot enhancements
- Secure Entry and Vestibule
- Security Camera and Entry Systems



entry view rendering - eisenhower elementary school



existing security cameras



facility maintenance - campus wide facade enhancements



WOOD FIBER CEMENT BOARD PANELING EXAMPLES

rendering - betsy ross elementary school



NEW PANELING OVER EXISTING BRICK AT SCHOOL ENTRANCE



EXISTING SCHOOL ENTRANCE

rendering - anne sullivan elementary school



REPLACE WOOD SIDING WITH NEW NICHHA FIBER CEMENT BOARD



EXISTING WOOD SIDING

rendering - anne sullivan elementary school

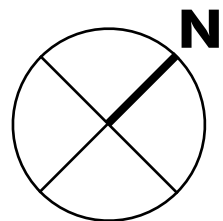


REPLACE WOOD SIDING WITH NEW NICHIBA FIBER CEMENT



EXISTING WOOD SIDING

preliminary budget - priority review & decision-making



Eisenhower Expansion/Renovation & Facility Master Planning Projects:
Preliminary Approx. ALL-IN Budget: \$24M

schedule

Option 1:

Late Summer/Early Fall 2022: Design Commencement

April 2023: Referendum

Summer 2023: Construction Commencement

Summer 2024: Construction Completion

Pros:

- Cost of Construction may be higher in 2024/2025
- Project Delivery for August 2024

Cons:

- Design Fee Commitment prior to a Referendum
- More Aggressive Schedule
- Costs related to Winter Construction

schedule

Option 2:

April 2023: Referendum

April/May 2023: Design Commencement

Early 2024: Bidding

Spring 2024: Construction Commencement

Summer 2025: Construction Completion

Pros:

- No Design Commitment prior to a Referendum
- Provides an opportunity for Current Market to calm down
- Less Aggressive Timeline
- Avoid Heavy Winter Conditions during the Construction Phase

Cons:

- Cost of Construction could be higher than in 2023/2024

going forward...

May 11, 2022 - Presentation to BOE

May 18, 2022 - District Improvement Team Meeting

Citizen's Task Force Meetings

CT Meeting 1 - 5/23/2022 - 7:00PM

CT Meeting 2 - 6/21/2022 - 7:00PM

CT Meeting 3 - early December

Public Opinion Research

August 10, 2022 - BOE Update

Q & A