



ENROLLMENT PROJECTIONS REPORT

ANTHONY WAYNE LOCAL SCHOOL DISTRICT

APRIL 17, 2023



TABLE OF CONTENTS

SECTION	PAGE
ACKNOWLEDGEMENTS	2
EXECUTIVE SUMMARY	3
ENROLLMENT PROJECTION METHODOLOGY	5
U.S. CENSUS	7
GENERAL DEMOGRAPHICS	18
ESTIMATED SCHOOL-AGED POPULATION CHANGE	20
HOUSING DATA.....	22
RESIDENT LIVE BIRTH DATA	25
SURVIVAL RATIOS	27
HISTORICAL ENROLLMENT	28
PROJECTED ENROLLMENT	31
ENROLLMENT BY SCHOOL OF ATTENDANCE	40
CONCLUSION	50

ACKNOWLEDGMENTS

On behalf of Cooperative Strategies, we would like to extend our appreciation to the Anthony Wayne Local School District for the opportunity to assist them in developing this Enrollment Projections Report which includes projections by school of attendance. As a planning team, we hope that this document will serve the Anthony Wayne Local School District for years to come.

COOPERATIVE STRATEGIES

Ann Hoffsis, REFP, Chief Operating Officer
Galina Lyogky, Associate Director
Cynthia Casarez, Associate

4675 Lakehurst Court, Suite 200
Dublin, OH 43016

P. 614.798.8828

www.coopstrategies.com

EXECUTIVE SUMMARY

The enrollment projections by school of attendance for the Anthony Wayne Local School District included in this report were developed using the cohort survival methodology and Cooperative Strategies' custom enrollment projection software, S.T.E.P. [Student Trends & Enrollment Projections]. This custom software was developed in collaboration with The Ohio State University and is based on industry best practices as well as the national experience Cooperative Strategies has with schools, school districts, and state agencies.



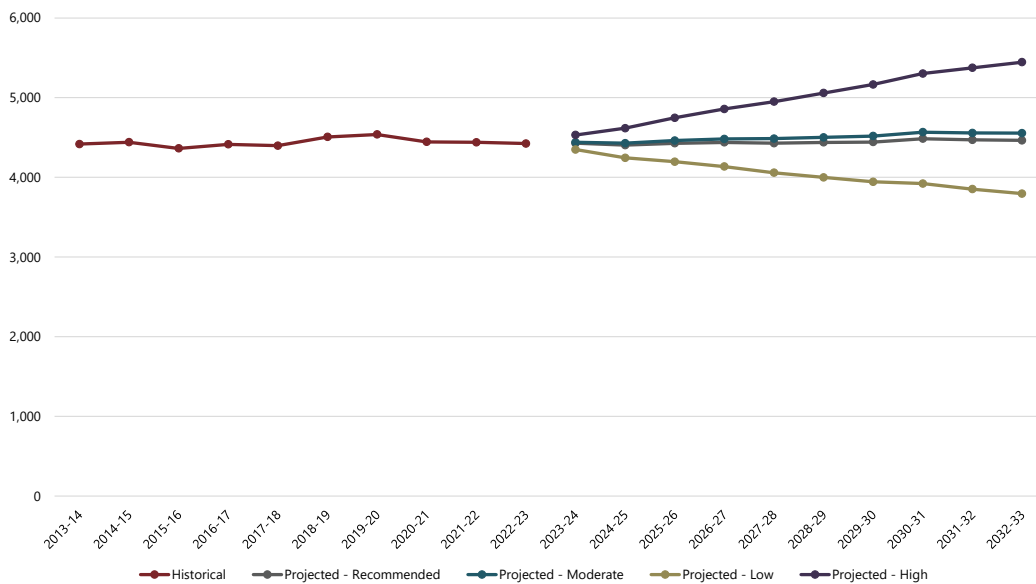
The Anthony Wayne Local School District serves 4,424 students in Monclova Primary, Waterville Primary, Whitehouse Primary, Fallen Timbers Middle, Anthony Wayne Junior High and Anthony Wayne High schools in the 2022-23 school year.

The projections presented in this report are meant to serve as a planning tool for the future, and represent the most likely direction of the District. Enrollment projections were developed using the cohort survival methodology and by analyzing the following data outlined in this report:

- Historical enrollment by school, by grade, by year
- Resident live birth data
- Census data
- Building permits

K-12 student enrollment in the Anthony Wayne Local School District has decreased by 82 students over the past 10 years.. From the 2013-14 to the 2019-20 school year, K-12 student enrollment increased by 40 students. Since the 2019-20 school year, K-12 student enrollment has decreased by 122 students. Based on the cohort survival methodology, enrollment is projected to increase over the next ten years.

HISTORICAL & PROJECTED ENROLLMENT - ANTHONY WAYNE LOCAL SCHOOL DISTRICT



As with any projection, the District should pay close attention to the variables associated with determining enrollment projections discussed in this document. Any one or more of these factors can increase or decrease enrollment within the Anthony Wayne Local School District. When projecting future enrollments, it is vital to track the number of live births, the amount of new housing activity, and the change in household composition. It is recommended that the data contained in this report be reviewed on an annual basis to determine how more recent trends and any new housing development will impact the enrollment. In addition, any of the following factors could cause a significant change in projected student enrollment:

- Boundary adjustments
- New school openings
- School closures
- Changes / additions in program offerings
- Preschool programs
- Changes in grade configuration
- Interest rates / unemployment shifts
- Intra- and inter-District transfers
- Magnet / charter / private school openings or closures
- Zoning changes
- Annexations
- Unplanned new housing activity
- Planned, but not built, housing
- School voucher programs
- Pandemics

Obviously, certain factors can be gauged and planned for far better than others. For instance, it may be relatively straightforward to gather housing data from local builders regarding the total number of lots in a planned subdivision and calculate the potential student yield. However, planning for changes in the unemployment rate, and how these may either boost or reduce public school enrollment, proves to be more difficult. In any case, it is essential to gather a wide variety of information in preparation for producing enrollment projections.

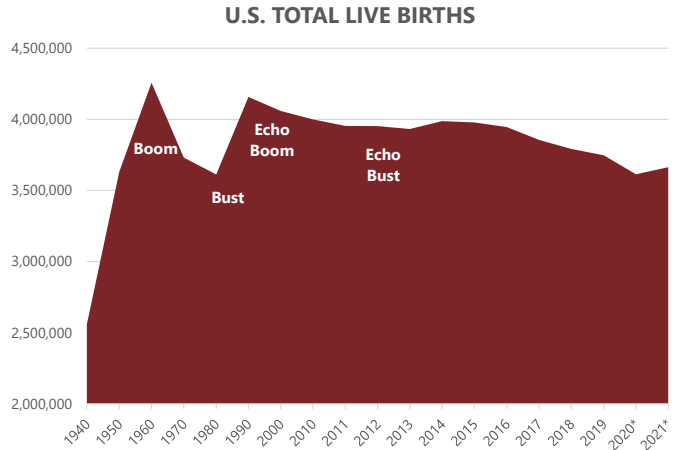
When looking ahead at a school district's enrollment over the next two, five, or ten years, it is helpful to approach the process from a global perspective. For example: How many new homes have been constructed each year? How many births have occurred each year in relation to the resident population? Is housing experiencing a turnover—if so, what is the composition of families moving in/out? Are more or less students attending private school or being home-schooled? What has the unemployment rate trend been over the past ten years? What new educational policies are in place that could affect student enrollment figures?

The cohort survival methodology is a standard methodology used throughout the educational planning industry to project enrollment. The enrollment projections developed for the Anthony Wayne Local School District were developed using the cohort survival method.

ENROLLMENT PROJECTION METHODOLOGY

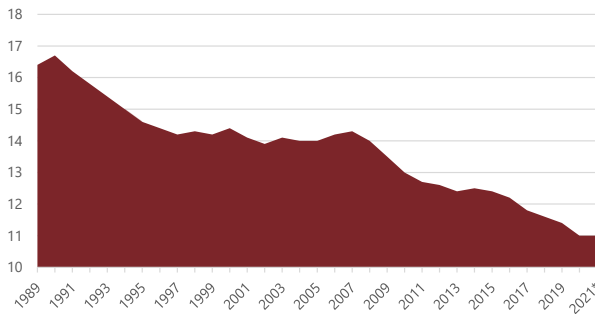
Introduction

Tracing the landscape of the country's public school enrollment back over the past fifty years reveals demographic, economic, and social changes. The United States as a whole continues to undergo major shifts in public student enrollment, due in large part to past events including the baby boom, the availability and use of birth control, and the development of suburbs. The baby boom of the late 1940s and 50s was followed by the baby bust of the 1960s and 70s. This gave rise to the echo baby boom of the 1980s.



Source: CDC, National Vital Statistics Report; *CDC, National Vital Statistics System

U.S. POPULATION - LIVE BIRTH RATE PER 1,000 POPULATION



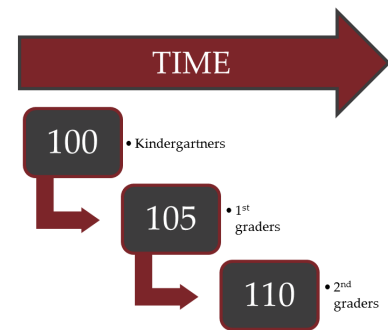
Source: CDC, National Vital Statistics Report; CDC, National Vital Statistics System

Nationwide, districts have experienced the effects of the echo baby bust of the 1990s. From the 1950s to the 1970s, a dramatic downsizing of the family unit occurred. A direct result was the declining school enrollment of the 1970s and 1980s. As of the 2010 Census, the size of a family was at an all-time low of 3.14 persons. The live birth rate increased for the first time in several years in 1998 and increased again in 2000 and 2006. However, the birth rate resumed a descending pattern in 2008 and reached an all-time low of 11.0 (per 1,000) in 2020 and remained at 11.0 in 2021.

Cohort Survival Method

The cohort survival methodology (sometimes referred to as the grade progression ratio method) is a widely used enrollment projection model that is used by many school districts and state and federal agencies to project K-12 enrollment.

A cohort is a group of persons [in this case, students]. The cohort survival enrollment projection methodology uses historic live birth data and historic student enrollment to “age” a known population or cohort throughout the school grades. For instance, a cohort begins when a group of kindergarteners enrolls in grade K and moves to first grade the following year, second grade the next year, and so on.



A “survival ratio” is developed to track how this group of students increased or decreased in number as they moved through the grade levels. By developing survival ratios for each grade transition [i.e. 2nd to 3rd grade] over a ten year period of time, patterns emerge. A projection ratio for each grade transition is developed based on analysis of the survival ratios. The projection ratios are used as a multiplier in determining future enrollment.

For example, if student enrollment has consistently increased from the 8th to the 9th grade over the past ten years, the survival ratio would be greater than 100% and could be multiplied by the current 8th grade enrollment to develop a projection for next year’s 9th grade. This methodology can be carried through to develop ten years of projection figures. Because there is not a grade cohort to follow for students coming into kindergarten, resident live birth counts are used to develop a birth-to-kindergarten survival ratio. Babies born five years previous to the kindergarten class are compared in number, and a ratio can be developed to project future kindergarten enrollments.

The cohort survival method is useful in areas where population is stable [relatively flat, growing steadily, or declining steadily], and where there have been no significant fluctuations in enrollment, births, and housing patterns from year to year. The cohort survival methodology inherently considers the net effects of factors such as migration, housing, dropouts, transfers to and from charter schools, open enrollment, and deaths. This methodology does not assume changes in policies, program offerings, or future changes in housing and migration patterns.

U.S. CENSUS

This section presents data from the United States Census Bureau and estimates from the American Community Survey (ACS) to demonstrate the demographic characteristics and historic trends of the population within the District boundary. While the Census is conducted every 10 years, the American Community Survey collects social, housing, educational, occupational, financial, and other demographic data from over 3.5 million households throughout the nation monthly and is compiled yearly, as mandated by the U.S. Constitution. This data helps public officials, federal/state/local agencies, school districts, etc. assess historic trends and plan for the future.

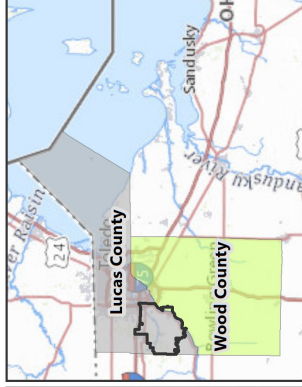
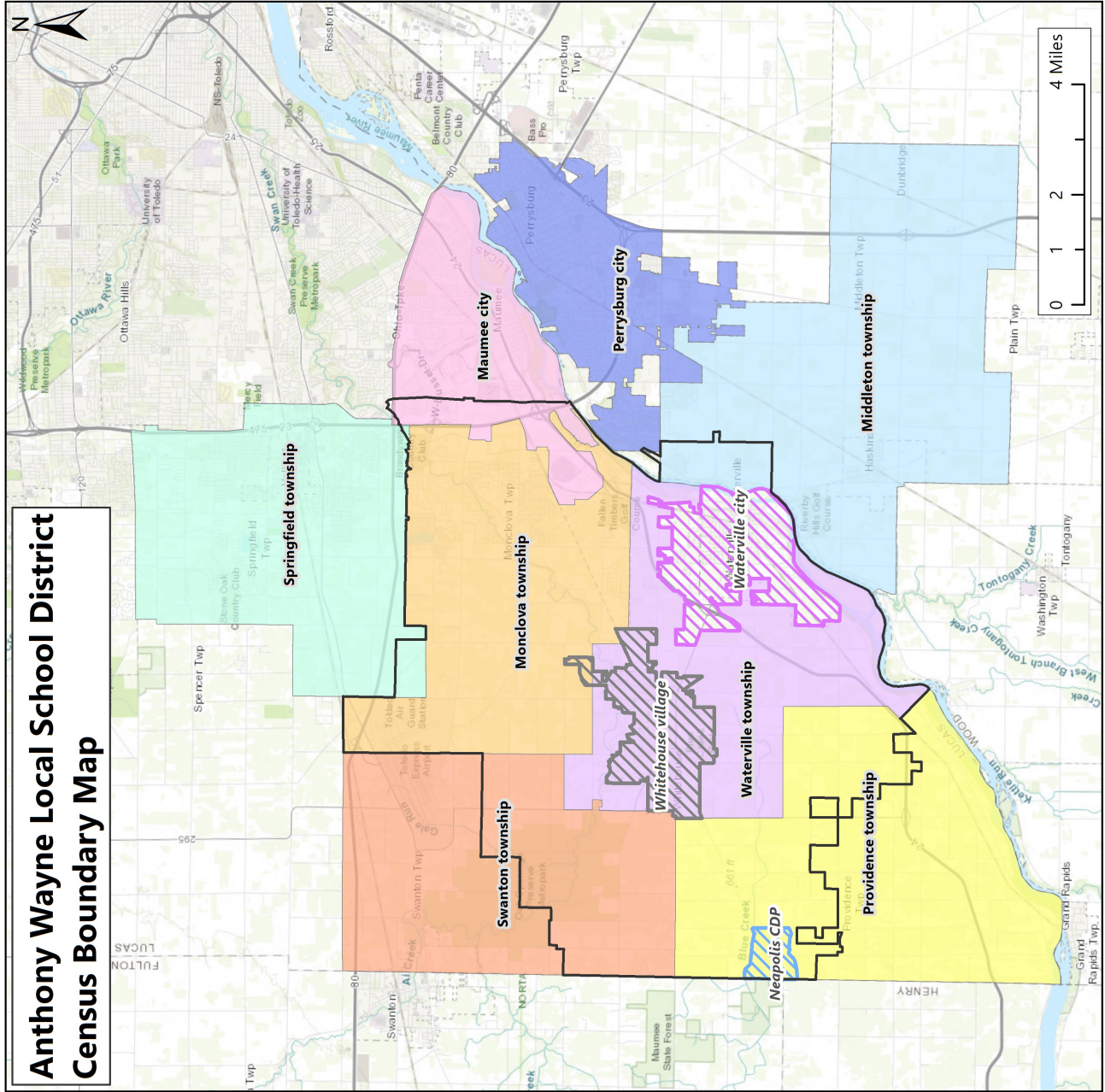
The Anthony Wayne Local School District is located in Lucas and Wood Counties, Ohio. It serves parts or all of Maumee city, Middleton township, Monclova township, Perrysburg city, Providence township, Roche de Boeuf township, Springfield township, Swanton township, Waterville township, Neapolis CDP*, Waterville city, and Whitehouse village. The data on the following pages is aggregated and color-coordinated by the boundaries shown in the map on the following page.

According to the U.S. Census Bureau, Ohio is a state where minor civil divisions (such as townships, commissioner districts, towns, etc.) are not legally established, so Census County Divisions (CCDs) are formed and used by the Census Bureau to aggregate Census data. While CCDs are not used in legal or governmental functions, they dissolve counties into smaller sections for statistical purposes by following geographical or man-made features (such as mountain ranges, rivers, roads, etc.) and are named after local places or settlements that help identify their location.

It should be noted that the District does not necessarily serve whole municipalities but data presented by municipality is for the whole municipality.

*Census Designated Place

Anthony Wayne Local School District Census Boundary Map



- Lucas County
- Wood County
- County Subdivisions**
- Maumee city
- Middleton township
- Monclova township
- Perrysburg city
- Providence township
- Springfield township
- Swanton township
- Waterville township
- Places**
- Neapolis CDP
- Waterville city
- Whitehouse village

This map shows the census boundaries used to delineate areas served by the District. It should be noted that the boundaries of cities/CDPs/townships and villages may vary across the years as population and commercial activity fluctuate.

Population

Population		Under 5 years	5 to 19 years	20 to 64 years	65 years and over	Total Population	Median Age
Anthony Wayne Local School District Boundary	2000**	-	-	-	-	-	-
	2010	1,514	6,096	16,200	4,000	27,810	42.9
	2021*	1,937	6,589	17,004	6,455	31,985	45.6
	Trend	↗	↗	↗	↗	↗	↗
Lucas County	2000	31,011	100,756	263,553	59,734	455,054	35.0
	2010	29,732	91,032	263,242	57,809	441,815	37.0
	2021*	27,135	83,902	249,897	70,278	431,212	38.2
	Trend	↘	↘	↘	↘	↘	↘
Wood County	2000	7,040	28,590	72,275	13,160	121,065	32.6
	2010	6,847	26,648	76,604	15,389	125,488	35.3
	2021*	6,834	27,173	77,726	20,197	131,930	35.1
	Trend	↔	↗	↗	↗	↗	↗
Maumee city	2000	802	3,221	9,203	2,001	15,227	38.2
	2010	769	2,812	8,742	1,963	14,286	39.7
	2021*	951	2,332	8,114	2,518	13,915	41.4
	Trend	↗	↘	↘	↗	↘	↗
Middleton township	2000	191	590	1,555	254	2,590	37.8
	2010	321	1,075	2,686	372	4,454	38.0
	2021*	306	990	3,334	880	5,510	37.6
	Trend	↔	↗	↗	↗	↗	↗
Monclova township	2000	455	1,528	4,065	732	6,780	39.1
	2010	694	2,656	7,033	2,017	12,400	43.8
	2021*	1,198	2,917	7,392	3,043	14,550	45.4
	Trend	↗	↗	↗	↗	↗	↗
Perrysburg city	2000	1,247	4,238	9,574	2,050	17,109	37.7
	2010	1,271	4,603	12,221	2,528	20,623	38.4
	2021*	1,536	5,346	14,085	3,666	24,633	37.5
	Trend	↗	↗	↗	↗	↗	↗
Providence township	2000	225	852	2,091	286	3,454	37.8
	2010	139	718	2,135	369	3,361	44.6
	2021*	87	716	1,885	704	3,392	48.8
	Trend	↘	↔	↘	↗	↘	↗
Springfield township	2000	1,625	4,827	15,000	2,594	24,046	35.5
	2010	1,606	5,030	16,177	3,380	26,193	39.1
	2021*	1,380	4,700	15,973	4,845	26,898	40.8
	Trend	↘	↔	↔	↗	↔	↗
Swanton township	2000	181	824	2,054	295	3,354	37.1
	2010	125	580	1,921	386	3,012	45.0
	2021*	92	307	1,807	634	2,840	49.8
	Trend	↘	↘	↘	↗	↘	↗
Waterville township	2000	564	2,334	5,342	1,229	9,469	39.1
	2010	659	2,600	6,580	1,497	11,336	40.9
	2021*	410	1,612	3,637	1,247	6,906	42.0
	Trend	↘	↘	↘	↔	↘	↗
Neapolis CDP	2000	0	0	0	0	0	-
	2010	18	102	253	50	423	39.7
	2021*	29	123	368	141	661	46.8
	Trend	↗	↗	↗	↗	↗	↗
Waterville city	2000	278	1,115	2,640	668	4,701	38.9
	2010	328	1,222	3,206	767	5,523	41.6
	2021*	229	1,231	3,193	1,290	5,943	45.4
	Trend	↘	↔	↔	↗	↗	↗
Whitehouse village	2000	150	689	1,612	298	2,749	39.9
	2010	247	1,005	2,401	496	4,149	39.0
	2021*	323	1,008	2,645	810	4,786	41.3
	Trend	↗	↔	↗	↗	↗	↗

Source: U.S. Census (*Source: American Community Survey 5-Year Estimates 2021, **data not available)
 Note: 2020 Census data was not yet available at the time of this study.

According to the 2021 ACS estimates, since the 2010 Census, the total population and median age increased in the District boundary.

Based on the 2021 estimates, since the 2010 Census, the number of children under the age of 5 has increased by 28 percent, the number of children ages 5 - 19 has increased by 8 percent, the number of adults ages 20 - 64 has increased by 5 percent, and the number of adults ages 65 and over has increased by 61 percent in the District boundary.

The 2000 and 2010 population counts and 2021 population estimates are shown in the table.

Race / Ethnicity & Language

The table below shows race and ethnic distribution throughout the Anthony Wayne Local School District boundary and the municipalities that are served by the District.

Race & Ethnicity		White alone	Black or African American alone	American Indian and Alaska Native alone	Asian alone	Native Hawaiian and Other Pacific Islander alone	Some other race alone	Two or more races	Total Population	Hispanic Population
Anthony Wayne Local School District Boundary	2000**	-	-	-	-	-	-	-	-	-
	2010	94.8%	1.5%	0.1%	1.6%	0.0%	0.7%	1.3%	27,810	2.6%
	2020	90.3%	1.9%	0.1%	1.8%	0.0%	1.0%	4.9%	32,270	3.5%
	2021*	92.9%	1.3%	0.4%	0.6%	0.0%	0.2%	4.5%	31,985	4.6%
Lucas County	2000	77.4%	16.9%	0.3%	1.2%	0.0%	1.8%	2.5%	455,054	4.5%
	2010	74.0%	19.0%	0.3%	1.5%	0.0%	2.0%	3.1%	441,815	6.1%
	2020	68.4%	19.7%	0.3%	1.7%	0.0%	2.4%	7.5%	431,279	7.5%
	2021*	70.7%	19.0%	0.3%	1.7%	0.1%	2.3%	6.0%	431,212	7.6%
Wood County	2000	94.7%	1.4%	0.2%	1.0%	0.0%	1.6%	1.2%	121,065	3.3%
	2010	92.8%	2.4%	0.2%	1.5%	0.0%	1.3%	1.7%	125,488	4.5%
	2020	87.2%	2.4%	0.2%	2.1%	0.0%	1.7%	6.4%	132,248	6.3%
	2021*	89.9%	2.0%	0.2%	1.8%	0.1%	1.3%	4.7%	131,930	5.9%
Maumee city	2000	96.0%	1.3%	0.2%	0.9%	0.0%	0.6%	1.0%	15,227	1.8%
	2010	94.7%	1.8%	0.2%	0.9%	0.0%	0.7%	1.7%	14,286	3.4%
	2020	89.3%	2.3%	0.2%	1.2%	0.0%	1.0%	6.0%	13,896	4.7%
	2021*	92.7%	2.6%	0.5%	0.6%	0.1%	0.9%	2.8%	13,915	5.2%
Middleton township	2000	97.9%	0.2%	0.0%	0.3%	0.0%	0.8%	0.7%	2,590	3.2%
	2010	95.8%	0.6%	0.1%	1.2%	0.0%	0.9%	1.4%	4,454	3.6%
	2020	90.7%	0.7%	0.1%	2.6%	0.0%	0.8%	5.1%	5,611	4.0%
	2021*	95.9%	0.4%	0.1%	1.0%	0.0%	1.3%	1.3%	5,510	2.3%
Monclova township	2000	96.7%	0.3%	0.4%	0.8%	0.0%	0.6%	1.2%	6,780	1.9%
	2010	93.3%	2.1%	0.2%	2.5%	0.0%	0.6%	1.3%	12,400	2.5%
	2020	88.8%	2.6%	0.1%	2.9%	0.0%	0.9%	4.7%	14,827	3.5%
	2021*	93.8%	1.5%	0.0%	0.8%	0.0%	0.2%	3.8%	14,550	2.0%
Perrysburg city	2000	95.3%	1.1%	0.0%	1.7%	0.0%	0.7%	1.3%	17,109	2.0%
	2010	92.9%	1.4%	0.1%	3.1%	0.0%	0.8%	1.6%	20,623	3.2%
	2020	86.1%	2.0%	0.2%	4.4%	0.0%	1.2%	6.2%	25,041	5.1%
	2021*	89.8%	1.7%	0.4%	3.7%	0.1%	0.4%	3.8%	24,633	4.2%
Providence township	2000	97.8%	0.2%	0.2%	0.2%	0.1%	0.0%	1.5%	3,454	1.5%
	2010	97.4%	0.2%	0.2%	0.4%	0.0%	1.0%	0.8%	3,361	3.0%
	2020	93.6%	0.3%	0.3%	0.4%	0.0%	1.0%	4.3%	3,378	3.8%
	2021*	93.7%	0.0%	0.0%	0.9%	0.1%	0.4%	4.9%	3,392	5.7%
Springfield township	2000	89.3%	5.9%	0.1%	1.4%	0.0%	1.2%	2.2%	24,046	2.8%
	2010	83.9%	9.7%	0.2%	2.5%	0.0%	1.1%	2.6%	26,193	4.2%
	2020	76.8%	11.6%	0.3%	2.6%	0.0%	1.5%	7.2%	26,957	6.0%
	2021*	80.5%	9.4%	0.4%	3.1%	0.2%	1.1%	5.3%	26,898	7.1%
Swanton township	2000	95.0%	2.2%	0.2%	0.8%	0.0%	0.3%	1.6%	3,354	3.2%
	2010	94.2%	2.5%	0.2%	0.8%	0.0%	0.8%	1.6%	3,012	3.6%
	2020	89.3%	1.4%	0.4%	0.3%	0.1%	2.4%	6.1%	2,822	4.9%
	2021*	87.1%	2.3%	0.0%	4.4%	0.0%	2.2%	4.0%	2,840	2.4%
Waterville township	2000	97.6%	0.2%	0.0%	0.8%	0.1%	1.1%	0.2%	9,469	1.2%
	2010	96.6%	0.6%	0.1%	0.8%	0.0%	0.6%	1.2%	11,336	2.3%
	2020	91.7%	0.9%	0.1%	0.7%	0.0%	0.9%	5.8%	7,036	3.2%
	2021*	94.3%	0.2%	1.9%	0.6%	0.1%	0.0%	3.0%	6,906	8.7%
Neapolis CDP	2000**	-	-	-	-	-	-	-	-	-
	2010	95.3%	0.0%	0.0%	0.0%	0.0%	3.5%	1.2%	423	5.4%
	2020	93.6%	0.8%	0.0%	0.0%	0.0%	1.2%	4.4%	497	6.0%
	2021*	100.0%	0.0%	0.0%	0.0%	0.0%	0.0%	0.0%	661	16.5%
Waterville city	2000	97.1%	0.5%	0.0%	0.4%	0.0%	1.9%	0.2%	4,701	1.4%
	2010	96.7%	0.5%	0.1%	1.0%	0.0%	0.6%	1.2%	5,523	2.7%
	2020	93.1%	0.8%	0.2%	0.8%	0.0%	1.0%	4.1%	6,003	3.6%
	2021*	90.3%	1.2%	0.2%	0.2%	0.0%	0.6%	7.6%	5,943	6.4%
Whitehouse village	2000	98.7%	0.0%	0.0%	0.6%	0.2%	0.6%	0.0%	2,749	1.2%
	2010	96.4%	0.9%	0.2%	0.6%	0.0%	0.6%	1.2%	4,149	2.3%
	2020	91.9%	1.0%	0.1%	0.4%	0.0%	0.8%	5.6%	4,990	3.3%
	2021*	94.5%	0.3%	2.7%	0.8%	0.2%	0.0%	1.5%	4,786	4.8%

Source: U.S. Census (**data not available)

According to the 2021 ACS estimates, most of the population in the District boundary speaks only English. The table below shows the languages spoken at home.

Languages Spoken at Home (2021 Estimates)	Anthony Wayne Local School District Boundary	Lucas County	Wood County	Maumee city	Middleton township	Monclova township	Perrysburg city	Providence township	Springfield township	Swanton township	Waterville township	Neapolis CDP	Waterville city	Whitehouse village
Population 5 years and over	30,048	404,077	125,096	12,964	5,204	13,352	23,097	3,305	25,518	2,748	6,496	632	5,714	4,463
Speak only English	94.3%	93.6%	95.4%	95.2%	97.2%	94.3%	92.9%	96.2%	95.4%	95.6%	93.5%	87.3%	95.1%	97.6%
Speak a language other than English	5.7%	6.4%	4.6%	5%	2.8%	5.7%	7.1%	3.8%	4.6%	4.4%	6.5%	12.7%	4.9%	2.4%
Spanish	622	10,594	2,425	321	41	24	438	81	477	15	404	80	103	90
Other Indo-European languages	410	5,796	1,709	201	50	170	574	14	257	105	16	0	105	16
Asian and Pacific Island languages	150	3,688	1,223	89	55	47	499	30	260	0	0	0	73	0
Other languages	525	5,808	345	5	0	525	125	0	176	0	0	0	0	0

Source: American Community Survey 5-Year Estimates (2021)

Housing & Families

According to the 2021 ACS estimates, approximately 88% of the homes in the Anthony Wayne Local School District boundary are single-unit structures while 10% of the homes are 2-or-more-unit structures. Approximately 28% of the District boundary's households have at least one school-aged (or younger) child in them.

Housing & Families (2021 Estimates)	Anthony Wayne Local School District Boundary	Lucas County	Wood County	Maumee city	Middleton township	Monclova township	Perrysburg city	Providence township	Springfield township	Swanton township	Waterville township	Neapolis CDP	Waterville city	Whitehouse village
Total Households	12,568	179,358	53,010	5,955	2,093	5,639	10,139	1,193	11,145	1,161	2,647	198	2,482	1,912
1-unit structures	87.8%	74.9%	68.8%	81.2%	98.8%	88.2%	67.6%	95.2%	67.4%	74.8%	87.2%	79.3%	86.9%	82.3%
2-or-more-unit structures	10.3%	23.2%	25.3%	18.5%	1.2%	8.7%	30.9%	0.0%	28.4%	4.6%	12.8%	0.0%	13.1%	17.7%
Mobile homes and all other types	1.9%	1.9%	5.9%	0.3%	0.0%	3.1%	1.5%	4.8%	4.2%	20.6%	0.0%	20.7%	0.0%	0.0%
Owner occupied:	84.8%	61.2%	64.2%	74.7%	94.6%	86.9%	62.9%	91.0%	63.0%	90.1%	81.6%	91.4%	85.9%	74.5%
Renter occupied:	15.2%	38.8%	35.8%	25.3%	5.4%	13.1%	37.1%	9.0%	37.0%	9.9%	18.4%	8.6%	14.1%	25.5%
Households with one or more people under 18 years	28.0%	28.3%	27.6%	25.6%	29.5%	29.0%	33.3%	29.3%	27.6%	13.1%	32.3%	25.3%	26.3%	30.5%
Average Family Size	3.07	3.03	2.98	2.94	3.16	3.09	3.06	3.03	2.93	2.76	3.15	3.34	3.09	3.12
Average Household Size	2.50	2.35	2.37	2.34	2.63	2.52	2.41	2.84	2.37	2.42	2.57	3.34	2.35	2.46

Source: American Community Survey 5-Year Estimates (2021)

According to the 2021 ACS estimates, the average family size has increased in the District boundary while the average household size has decreased.

The number of occupied and vacant housing units in the District boundary has increased in tandem with the number of total housing units.

Family/Household Size		Average Family Size	Average Household Size
Anthony Wayne Local School District Boundary	2000**	-	-
	2010	3.03	2.65
	2021*	3.07	2.50
	Trend	↘	↘
Lucas County	2000	3.06	2.44
	2010	3.01	2.39
	2021*	3.03	2.35
	Trend	↘	↘
Wood County	2000	3.04	2.51
	2010	2.98	2.43
	2021*	2.98	2.37
	Trend	↘	↘
Maumee city	2000	2.98	2.39
	2010	2.98	2.37
	2021*	2.94	2.34
	Trend	↘	↘
Middleton township	2000	3.12	2.82
	2010	3.16	2.84
	2021*	3.16	2.63
	Trend	↘	↘
Monclova township	2000	3.09	2.72
	2010	3.01	2.64
	2021*	3.09	2.52
	Trend	↘	↘
Perrysburg city	2000	3.22	2.61
	2010	3.10	2.48
	2021*	3.06	2.41
	Trend	↘	↘
Providence township	2000	3.27	2.89
	2010	3.00	2.70
	2021*	3.03	2.84
	Trend	↘	↘
Springfield township	2000	3.00	2.47
	2010	2.97	2.44
	2021*	2.93	2.37
	Trend	↘	↘
Swanton township	2000	3.15	2.75
	2010	2.97	2.55
	2021*	2.76	2.42
	Trend	↘	↘
Waterville township	2000	3.16	2.72
	2010	3.07	2.67
	2021*	3.15	2.57
	Trend	↘	↘
Neapolis CDP	2000	-	-
	2010	3.03	2.68
	2021*	3.34	3.34
	Trend	↘	↘
Waterville city	2000	3.15	2.67
	2010	3.03	2.62
	2021*	3.09	2.35
	Trend	↘	↘
Whitehouse village	2000	3.14	2.66
	2010	3.11	2.67
	2021*	3.12	2.46
	Trend	↘	↘

Housing Occupancy		Total housing units	Occupied housing units	Vacant housing units
Anthony Wayne Local School District Boundary	2000**	-	-	-
	2010	10,791	10,288	503
	2021*	13,464	12,568	896
	Trend	↗	↗	↗
Lucas County	2000	196,259	182,847	13,412
	2010	202,630	180,267	22,363
	2021*	200,402	179,358	21,044
	Trend	↘	↘	↘
Wood County	2000	47,468	45,172	2,296
	2010	53,376	49,043	4,333
	2021*	56,515	53,010	3,505
	Trend	↗	↗	↗
Maumee city	2000	6,609	6,336	273
	2010	6,435	6,037	398
	2021*	6,202	5,955	247
	Trend	↘	↘	↘
Middleton township	2000	998	951	47
	2010	1,663	1,571	92
	2021*	2,180	2,093	87
	Trend	↗	↗	↗
Monclova township	2000	2,499	2,365	134
	2010	4,808	4,581	227
	2021*	6,219	5,639	580
	Trend	↗	↗	↗
Perrysburg city	2000	6,997	6,611	386
	2010	8,845	8,246	599
	2021*	10,826	10,139	687
	Trend	↗	↗	↗
Providence township	2000	1,251	1,206	45
	2010	1,327	1,244	83
	2021*	1,321	1,193	128
	Trend	↗	↗	↗
Springfield township	2000	9,971	9,447	524
	2010	11,446	10,568	878
	2021*	11,799	11,145	654
	Trend	↗	↗	↗
Swanton township	2000	1,267	1,204	63
	2010	1,247	1,168	79
	2021*	1,340	1,161	179
	Trend	↗	↗	↗
Waterville township	2000	3,526	3,395	131
	2010	4,360	4,180	180
	2021*	2,708	2,647	61
	Trend	↘	↘	↘
Neapolis CDP	2000	-	-	-
	2010	179	158	21
	2021*	230	198	32
	Trend	↗	↗	↗
Waterville city	2000	1,803	1,716	87
	2010	2,151	2,065	86
	2021*	2,543	2,482	61
	Trend	↗	↗	↗
Whitehouse village	2000	1,064	1,032	32
	2010	1,591	1,524	67
	2021*	1,959	1,912	47
	Trend	↗	↗	↗

Source: U.S. Census (*Source: American Community Survey 5-Year Estimates 2021, **data not available)
 Note: 2020 Census data was not yet available at the time of this study.

Industry & Occupation

The table below illustrates the types of industry and occupation in the Anthony Wayne Local School District boundary and the areas it serves. 2021 estimates are calculated for the civilian employed population 16 years and over.

Industry & Occupation for the Civilian Employed Population 16 Years and Over, (2021 Estimates)	Anthony Wayne Local School District Boundary	Lucas County	Wood County	Maumee city	Middleton township	Monclova township	Perrysburg city	Providence township	Springfield township	Swanton township	Waterville township	Neapolis CDP	Waterville city	Whitehouse village
Total population	31,985	431,212	131,930	13,915	5,510	14,550	24,633	3,392	26,898	2,840	6,906	661	5,943	4,786
Civilian employed population, 16 years and over	14,795	200,632	69,969	7,593	2,929	6,102	12,671	1,745	13,490	1,591	3,355	476	2,843	2,467
Industry														
Agriculture, forestry, fishing and hunting, and mining	0.9%	0.4%	0.8%	0.7%	0.5%	0.0%	0.7%	3.0%	0.2%	0.1%	1.0%	0.0%	1.5%	1.0%
Construction	8.3%	5.2%	5.5%	3.8%	3.0%	10.0%	4.9%	10.9%	5.1%	9.6%	3.1%	22.7%	9.8%	1.5%
Manufacturing	14.6%	16.0%	18.9%	13.4%	22.5%	13.6%	18.6%	15.8%	19.8%	16.3%	18.0%	8.4%	11.3%	17.8%
Wholesale trade	2.5%	3.0%	2.5%	3.6%	2.0%	2.0%	3.1%	1.8%	3.0%	3.8%	2.9%	3.8%	2.1%	3.2%
Retail trade	9.7%	11.6%	10.9%	7.4%	10.5%	5.4%	7.6%	20.1%	12.2%	12.9%	12.3%	33.4%	7.9%	16.8%
Transportation and warehousing, and utilities	3.7%	5.7%	5.1%	6.1%	4.8%	1.7%	3.8%	2.4%	4.9%	4.8%	8.0%	0.0%	4.4%	5.9%
Information	1.5%	1.5%	1.3%	2.1%	1.7%	1.4%	0.6%	0.6%	0.7%	3.3%	1.2%	0.0%	2.1%	0.0%
Finance and insurance, and real estate and rental and leasing	5.4%	4.6%	4.9%	5.2%	6.6%	6.9%	6.5%	3.6%	7.2%	6.5%	6.7%	0.0%	1.5%	9.1%
Professional, scientific, and management, and administrative and waste management services	13.2%	9.6%	7.7%	8.1%	6.5%	14.1%	11.6%	7.2%	10.7%	8.4%	14.2%	0.0%	14.0%	17.8%
Educational services, and health care and social assistance	26.5%	25.2%	26.8%	29.0%	34.3%	32.8%	29.5%	20.7%	23.4%	15.5%	18.8%	8.6%	29.7%	13.3%
Arts, entertainment, and recreation, and accommodation and food services	7.2%	9.9%	9.5%	10.9%	3.5%	5.3%	6.5%	8.4%	6.4%	5.2%	7.7%	23.1%	9.9%	7.0%
Other services, except public administration	2.8%	4.4%	3.3%	5.1%	1.2%	3.0%	4.1%	4.6%	2.6%	8.9%	3.6%	0.0%	1.4%	4.0%
Public administration	3.7%	2.9%	2.8%	4.3%	2.9%	3.6%	2.4%	0.8%	3.9%	4.6%	2.5%	0.0%	4.4%	2.7%
Occupation														
Management, business, science, and arts occupations	47.0%	34.3%	39.4%	41.2%	59.9%	60.4%	56.8%	31.2%	41.8%	23.9%	38.2%	1.9%	42.8%	34.7%
Service occupations	13.4%	17.8%	15.9%	18.0%	13.2%	10.1%	8.5%	18.3%	11.1%	10.4%	14.9%	31.7%	14.9%	14.3%
Sales and office occupations	21.5%	21.0%	20.1%	19.8%	12.7%	17.1%	20.9%	22.3%	20.9%	24.8%	25.9%	25.4%	23.9%	28.1%
Natural resources, construction, and maintenance occupations	7.4%	7.2%	6.8%	6.2%	5.9%	7.2%	2.7%	6.1%	6.8%	14.1%	6.1%	10.5%	8.6%	4.5%
Production, transportation, and material moving occupations	10.7%	19.7%	17.8%	14.8%	8.3%	5.1%	11.0%	22.1%	19.3%	26.9%	14.9%	30.5%	9.8%	14.3%

Source: American Community Survey 5-Year Estimates (2021)

Financial Status

According to the U.S. Census Bureau, earnings come from a job (salary/wages) while income also includes payments such as "Social Security, pensions, child support, public assistance, annuities, money derived from rental properties, interest and dividends." The table below shows income, earnings, poverty status, and unemployment rate in the ACS 2021 estimates.

Financial Status (2021 Estimates)	Anthony Wayne Local School District Boundary	Lucas County	Wood County	Maumee city	Middleton township	Monclova township	Perrysburg city	Providence township	Springfield township	Swanton township	Waterville township	Neapolis CDP	Waterville city	Whitehouse village
Earnings														
Population 16 years and over with earnings	16,612	226,222	78,741	8,017	3,334	7,077	13,864	1,984	14,734	1,737	3,644	550	3,143	2,549
Full-time, year-round workers with earnings	10,049	136,858	45,170	5,516	2,167	4,437	8,984	1,055	9,706	1,063	2,152	108	1,985	1,464
\$1 to \$9,999 or less	0.1%	1.5%	1.5%	0.4%	1.3%	0.0%	0.0%	0.0%	0.6%	0.0%	0.7%	0.0%	0.0%	0.0%
\$10,000 to \$14,999	1.3%	2.6%	1.6%	0.7%	3.5%	0.5%	0.1%	6.1%	1.7%	0.9%	1.9%	29.6%	0.0%	2.7%
\$15,000 to \$24,999	4.8%	9.9%	8.8%	5.5%	0.7%	0.0%	3.3%	7.8%	9.4%	8.2%	6.9%	9.3%	10.5%	5.6%
\$25,000 to \$34,999	8.6%	17.1%	14.8%	11.7%	7.9%	7.6%	6.3%	10.3%	16.1%	19.6%	10.5%	3.7%	8.8%	13.3%
\$35,000 to \$49,999	13.0%	21.6%	18.7%	20.8%	22.3%	13.0%	12.3%	15.0%	14.0%	32.1%	11.6%	0.0%	13.5%	16.3%
\$50,000 to \$64,999	13.7%	17.0%	16.1%	19.6%	14.5%	14.6%	17.4%	11.8%	18.6%	10.5%	11.6%	17.6%	15.8%	12.4%
\$65,000 to \$74,999	10.1%	7.4%	8.1%	10.7%	7.2%	6.5%	10.0%	11.6%	6.7%	7.7%	8.8%	8.3%	14.1%	7.4%
\$75,000 to \$99,999	16.3%	10.6%	13.6%	15.9%	15.3%	18.1%	18.9%	16.2%	14.4%	13.1%	15.9%	31.5%	14.0%	17.4%
\$100,000 or more	32.1%	12.5%	16.8%	14.7%	27.2%	39.8%	31.7%	21.2%	18.5%	7.9%	32.2%	0.0%	23.4%	24.8%
Median Earnings	\$51,132	\$33,234	\$32,928	\$43,807	\$45,761	\$56,583	\$57,111	\$40,402	\$39,653	\$35,089	\$47,244	\$12,269	\$44,893	\$44,647
Household Income														
Total Households	12,568	179,358	53,010	5,955	2,093	5,639	10,139	1,193	11,145	1,161	2,647	198	2,482	1,912
Less than \$10,000	3.2%	8.8%	5.4%	2.4%	2.9%	4.9%	2.8%	4.5%	4.5%	1.0%	0.0%	15.7%	1.8%	0.0%
\$10,000 to \$14,999	1.6%	5.6%	3.6%	1.9%	3.7%	0.6%	2.7%	1.4%	3.1%	3.0%	1.7%	0.0%	0.6%	2.4%
\$15,000 to \$24,999	4.5%	9.2%	8.3%	5.3%	1.8%	4.8%	3.9%	1.7%	4.7%	3.6%	3.9%	0.0%	5.1%	4.8%
\$25,000 to \$34,999	6.6%	10.1%	8.2%	7.7%	2.0%	5.5%	5.7%	3.7%	9.1%	8.2%	8.6%	0.0%	6.2%	10.3%
\$35,000 to \$49,999	9.4%	13.4%	12.2%	12.5%	9.9%	8.4%	7.7%	7.6%	10.7%	10.9%	11.4%	2.0%	10.7%	14.7%
\$50,000 to \$74,999	14.4%	17.7%	18.6%	20.7%	21.9%	12.5%	17.2%	18.8%	20.4%	21.4%	15.0%	13.1%	19.9%	19.5%
\$75,000 to \$99,999	12.0%	11.8%	13.2%	14.5%	7.9%	11.7%	14.3%	12.5%	13.9%	22.7%	6.7%	23.2%	16.5%	7.8%
\$100,000 to \$149,999	21.4%	13.5%	16.3%	22.0%	20.8%	19.6%	19.4%	26.4%	16.5%	20.2%	24.6%	16.7%	21.0%	19.1%
\$150,000 to \$199,999	14.0%	5.1%	6.9%	8.6%	14.7%	17.0%	8.2%	14.3%	9.2%	6.1%	10.7%	29.3%	11.2%	9.9%
\$200,000 or more	13.0%	4.7%	7.5%	4.4%	14.3%	15.1%	18.3%	9.1%	8.0%	2.8%	17.3%	0.0%	7.1%	11.7%
Median income (dollars)	\$92,788	\$53,176	\$66,337	\$74,145	\$99,784	\$102,141	\$92,834	\$94,375	\$69,577	\$75,943	\$108,199	\$93,000	\$79,857	\$73,682
Poverty Status														
% below poverty level	6.0%	17.6%	12.6%	5.2%	4.8%	4.4%	4.6%	5.6%	8.6%	5.6%	6.1%	9.1%	5.2%	8.8%
Under 18 years	6.7%	25.3%	11.3%	5.4%	0.3%	0.7%	3.4%	6.2%	10.3%	9.7%	11.3%	46.0%	8.2%	17.0%
18 to 64 years	6.2%	16.7%	14.3%	5.5%	6.3%	5.8%	4.5%	6.4%	8.4%	3.7%	4.7%	6.8%	4.3%	6.5%
65 years and over	4.7%	9.9%	7.5%	3.8%	4.8%	5.6%	7.4%	2.8%	7.6%	9.5%	2.6%	0.0%	3.7%	3.6%
Unemployment Rate														
Population 20 to 64 years	5.3%	6.8%	4.0%	2.5%	5.7%	7.6%	4.2%	8.0%	5.0%	4.4%	2.7%	16.8%	0.8%	1.8%

Source: American Community Survey 5-Year Estimates (2021)

Computer / Internet Access

The table below shows the presence of a computer and/or internet subscription in households in the geographies served by the District, according to the 2021 ACS estimates. Percentages shown are based on total households.

% of Total Households with Internet/Computers (2021 Estimates)	Anthony Wayne Local School District Boundary	Lucas county	Wood County	Maumee city	Middleton township	Mondova township	Perrysburg city	Providence township	Springfield township	Swanton township	Waterville township	Neapolis CDP	Waterville city	Whitehouse village
Has a Computer	96.4%	92.0%	95.2%	96.5%	96.2%	97.9%	96.0%	99.3%	94.7%	90.2%	97.2%	100.0%	95.21%	98.22%
Has an Internet subscription	92.6%	85.3%	89.5%	94.0%	91.6%	96.9%	92.1%	89.6%	90.6%	87.2%	94.3%	100.0%	93.43%	94.14%
Has no Internet Subscription	3.7%	6.7%	5.7%	2.5%	4.6%	1.0%	3.9%	9.7%	4.1%	3.0%	2.9%	0.0%	1.77%	4.08%
Has no Computer	3.6%	8.0%	4.8%	3.5%	3.8%	2.1%	4.0%	0.7%	5.3%	9.8%	2.8%	0.0%	4.79%	1.78%

Source: American Community Survey 5-Year Estimates (2021)

School Enrollment

The tables below summarize the percentage of the population living within the Anthony Wayne Local School District boundary, by age group, enrolled in school; enrolled in school and attending public school; and enrolled in school and attending private school, based on U.S. Census American Community Survey (ACS) 5-Year Estimates. Home-schooled children are counted in the private school data. If anyone in these age groups had not attended any school in the 3 months before the survey was conducted, they were considered to not be enrolled in any school.

It should be noted that this data is not a survey of the students attending schools in the District; rather, it is based on monthly surveys sent out by the ACS to households in the District boundary. This survey data is then used to create the estimates shown in the tables below.

ANTHONY WAYNE LOCAL SCHOOL DISTRICT BOUNDARY % OF AGE GROUP ENROLLED IN SCHOOL

Age Group	2013	2014	2015	2016	2017	2018	2019	2020	2021	Trend
3-4	51.5%	50.1%	54.4%	53.5%	57.4%	56.0%	50.5%	39.9%	44.5%	
5-9	97.1%	96.7%	97.8%	94.0%	94.2%	94.5%	95.3%	96.5%	98.8%	
10-14	100.0%	100.0%	100.0%	100.0%	100.0%	100.0%	100.0%	100.0%	99.4%	
15-17	100.0%	100.0%	100.0%	100.0%	100.0%	100.0%	100.0%	100.0%	100.0%	
18-19	80.1%	83.0%	85.8%	84.1%	95.8%	91.3%	85.1%	91.9%	92.2%	

Source: U.S. Census American Community Survey 5-Year Estimates 2013, 2014, 2015, 2016, 2017, 2018, 2019, 2020, 2021

ANTHONY WAYNE LOCAL SCHOOL DISTRICT BOUNDARY % OF AGE GROUP ENROLLED IN SCHOOL ATTENDING PUBLIC SCHOOL

Age Group	2013	2014	2015	2016	2017	2018	2019	2020	2021	Trend
3-4	39.1%	31.9%	29.0%	25.1%	16.3%	14.0%	14.4%	18.1%	38.1%	
5-9	72.6%	67.2%	72.4%	70.8%	71.3%	81.2%	82.6%	76.8%	76.5%	
10-14	90.7%	92.6%	90.0%	87.9%	86.7%	87.4%	85.2%	87.8%	87.6%	
15-17	83.4%	87.9%	87.2%	88.3%	88.3%	93.8%	90.1%	94.1%	89.7%	
18-19	69.6%	77.1%	79.5%	77.7%	87.8%	97.1%	98.0%	95.2%	97.0%	

Source: U.S. Census American Community Survey 5-Year Estimates 2013, 2014, 2015, 2016, 2017, 2018, 2019, 2020, 2021

ANTHONY WAYNE LOCAL SCHOOL DISTRICT BOUNDARY % OF AGE GROUP ENROLLED IN SCHOOL ATTENDING PRIVATE SCHOOL

Age Group	2013	2014	2015	2016	2017	2018	2019	2020	2021	Trend
3-4	60.9%	68.1%	71.0%	74.9%	83.7%	86.0%	85.6%	81.9%	61.9%	
5-9	27.4%	32.8%	27.6%	29.2%	28.7%	18.8%	17.4%	23.2%	23.5%	
10-14	9.3%	7.4%	10.0%	12.1%	13.3%	12.6%	14.8%	12.2%	12.4%	
15-17	16.6%	12.1%	12.8%	11.7%	11.7%	6.2%	9.9%	5.9%	10.3%	
18-19	30.4%	22.9%	20.5%	22.3%	12.2%	2.9%	2.0%	4.8%	3.0%	

Source: U.S. Census American Community Survey 5-Year Estimates 2013, 2014, 2015, 2016, 2017, 2018, 2019, 2020, 2021

GENERAL DEMOGRAPHICS

The following information represents block group estimates created from market research and U.S. Census data obtained from the Environmental Systems Research Institute [ESRI]. ESRI provides a yearly update to their demographic data in increments of five years. To make updates to their demographic data set, they use American Community Survey [ACS] data that takes a series of monthly sample surveys but only from areas with populations of 65,000 or more. One year of ACS data is a period estimate as a twelve-month average, rather than a single point in time.

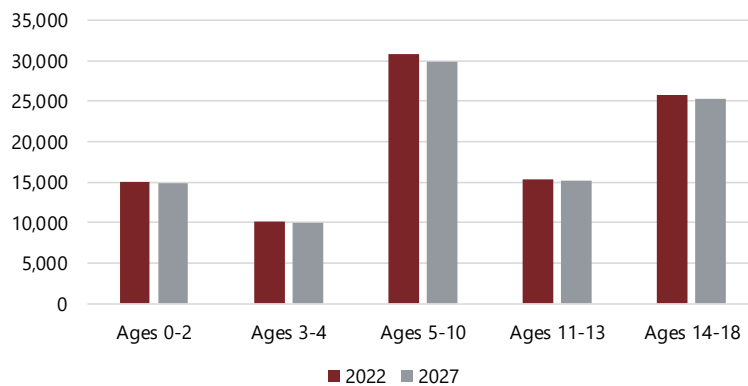
According to the ESRI estimates, the total population of Lucas County is estimated to decrease over the next five years. As illustrated in the table below, the number of children, ages 5-18, is estimated to decrease by 1,522 children, or approximately 2 percent.

LUCAS COUNTY POPULATION ESTIMATES

Age Group	2022	2027	Change	% Change
Ages 0-2	15,047	14,924	-123	-1%
Ages 3-4	10,141	9,969	-172	-2%
Ages 5-10	30,787	29,922	-865	-3%
Ages 11-13	15,343	15,243	-100	-1%
Ages 14-18	25,777	25,220	-557	-2%
Ages 5-18	71,907	70,385	-1,522	-2%
Total Population	427,750	423,309	-4,441	-1%

Source: ESRI BIS

LUCAS COUNTY POPULATION ESTIMATES



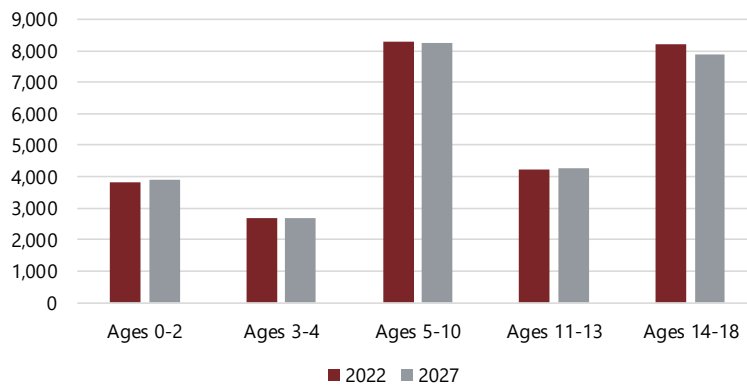
According to the ESRI estimates, the total population of Wood County is estimated to increase over the next five years. As illustrated in the table below, the number of children, ages 5-18, is estimated to decrease by 324 children, or approximately 2 percent.

**WOOD COUNTY
POPULATION ESTIMATES**

Age Group	2022	2027	Change	% Change
Ages 0-2	3,817	3,884	67	2%
Ages 3-4	2,695	2,693	-2	0%
Ages 5-10	8,300	8,227	-73	-1%
Ages 11-13	4,221	4,276	55	1%
Ages 14-18	8,194	7,888	-306	-4%
Ages 5-18	20,715	20,391	-324	-2%
Total Population	133,436	134,582	1,146	1%

Source: ESRI BIS

**WOOD COUNTY
POPULATION ESTIMATES**

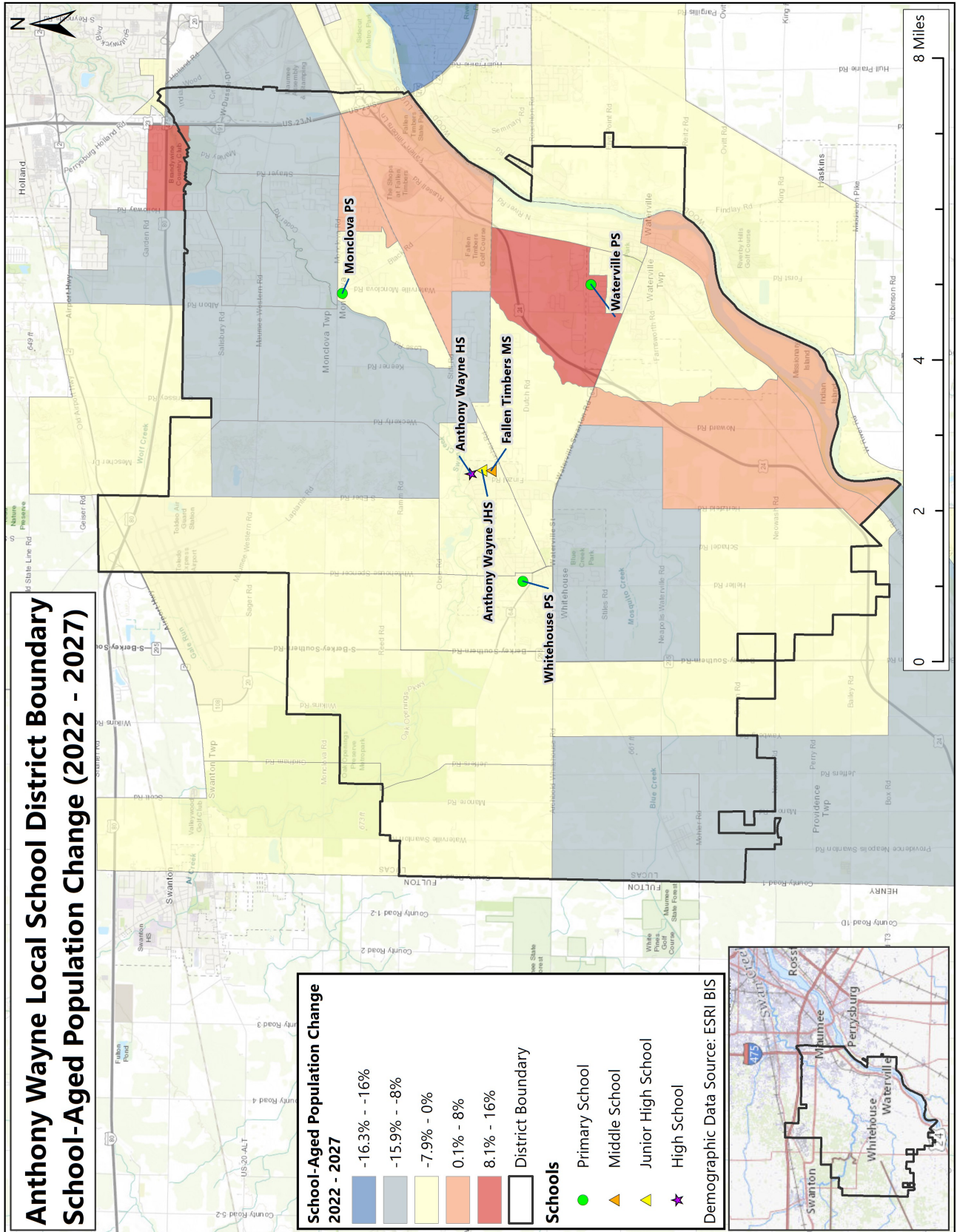


ANTHONY WAYNE LOCAL SCHOOL DISTRICT BOUNDARY ESTIMATED SCHOOL-AGED POPULATION CHANGE 2022-2027

The map on the following page shows school-aged population change in the U.S. Census block groups within / around the Anthony Wayne Local School District boundary. Population changes are based on 2022 and 2027 estimates.

A block group is defined by the U.S. Census Bureau as, "a statistical district of a census tract, generally defined to contain between 600 and 3,000 people and 240 and 1,200 housing units, and the smallest geographic unit for which the Census Bureau tabulates sample data."

Anthony Wayne Local School District Boundary School-Aged Population Change (2022 - 2027)



HOUSING DATA

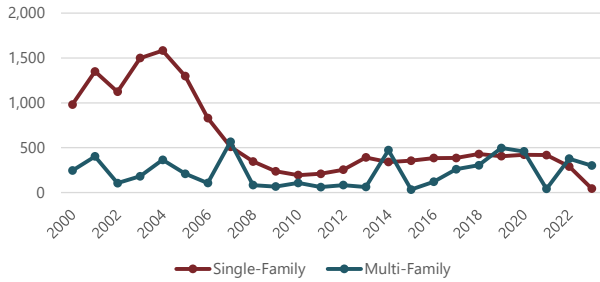
Housing development and building permits are tracked to determine their effect on student enrollment. The table below and graphs on the following page illustrate the number of single- and multi-family building permits issued in Lucas County, Wood County, Maumee city and Whitehouse village since 2000.

BUILDING PERMITS

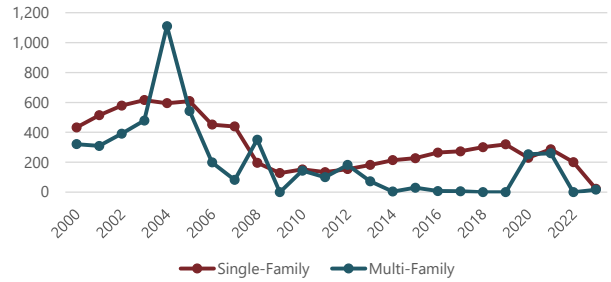
Year	LUCAS COUNTY		WOOD COUNTY		MAUMEE CITY		WHITEHOUSE VILLAGE	
	Single-Family	Multi-Family	Single-Family	Multi-Family	Single-Family	Multi-Family	Single-Family	Multi-Family
2000	981	246	433	321	6	0	34	0
2001	1,349	403	514	309	6	0	38	0
2002	1,124	105	579	391	5	0	41	0
2003	1,499	182	616	479	4	0	74	0
2004	1,582	365	595	1,110	9	0	93	0
2005	1,297	210	609	543	10	0	103	0
2006	831	107	452	199	4	0	50	36
2007	511	565	439	82	3	0	25	0
2008	346	84	197	351	2	0	15	0
2009	238	67	128	0	2	0	1	0
2010	195	108	152	144	5	0	12	32
2011	210	61	134	100	5	0	27	0
2012	255	83	154	182	4	0	31	0
2013	392	63	182	73	1	0	32	0
2014	341	473	214	4	4	0	35	0
2015	356	34	227	30	3	0	44	0
2016	385	120	265	8	2	0	34	55
2017	386	261	273	6	14	0	37	0
2018	430	305	301	0	18	0	32	0
2019	406	497	320	0	5	4	43	0
2020	422	459	230	254	14	0	22	0
2021	418	42	287	260	14	0	24	0
2022	291	378	201	0	12	0	20	0
2023*	45	301	22	17	0	0	1	0

Source: SOCDs Building Permits Database (*preliminary through February 2023)

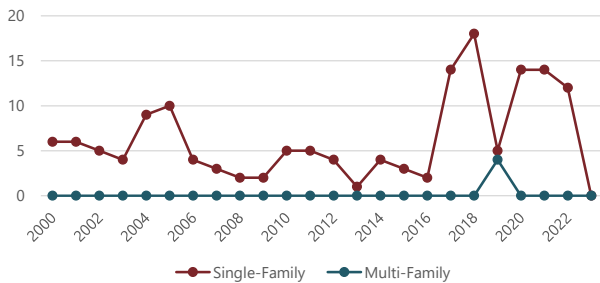
**LUCAS COUNTY
BUILDING PERMITS**



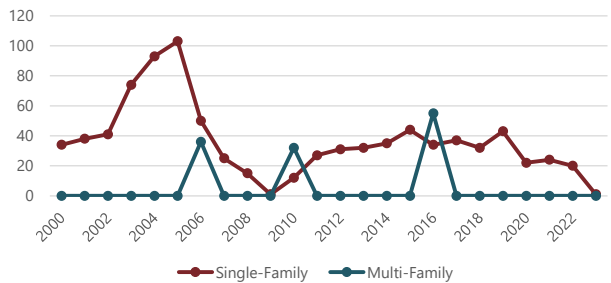
**WOOD COUNTY
BUILDING PERMITS**



**MAUMEE CITY
BUILDING PERMITS**



**WHITEHOUSE VILLAGE
BUILDING PERMITS**



The table below illustrates the number of building permits issued in the City of Waterville and Monclova Township over the past few years.

BUILDING PERMITS

Year	Waterville			Monclova Township	
	Single-Family	Condo units	Apartment Units	New Residence	Apartments
2017				128	0
2018	17	52		57	113
2019	34	24	144	77	0
2020	27			109	0
2021	32			76	0
2022	25			59	0

Source: City of Waterville

Source: Monclova Township

Residential Housing Development

The table below shows the planned development in the municipalities that are within/surrounding the Anthony Wayne Local School District

Residential Housing Developments			
Development	Type	Units	Notes
Monclova Township			
Blystone Valley	Lots	78	Plats 9/10 (54 Units), Plat 11 (24 Units)
Brickerville Commons	Lots	90	-
Cedar Grove (Plat 1)	Lots	13	-
Coder Cove	Lots	20	-
Conventry Glen	Lots	32	Plat 2 (14 Units), Plat 3 (18 Units)
Crimson Hollow	Lots	125	Plat 9 (42 units) , Plat 5 (18 Units), Plat 6 (19 units), Plat 8 (24), Plot 9 (12 Units), Plot 10 (10 Units)
Crystal Ridge (Plat 5)	Lots	51	-
Dedication Plat of Southpine Court	TBD	TBD	-
Enclave at Fallen Timbers	Lots	5	-
Evergreen Abbey (Plat 1)	Lots	28	-
Fallen Timbers Mall area	SFD/Villas/Condos/Apt.	580	Single-family homes (230), senior living (100), apartments (250)
Fallen Timbers Fairways (Plat 7)	Lots	8	-
Gray Stone Manor	Lots	92	-
Lakes of Monclova Villas	Villas	34	34 Units Proposed but 42 Units Max
Lakeside at Fallen Timbers	Villas/Condos/Townhomes	324	Villas (172 units), Townhomes (24 Units) and Condos (128 Units)
Legends at Fallen Timbers	Lots	14	-
Maumee Western Villas	Villas	104	104 Units Proposed but 127 Units Max
Rutherford	Lots	29	Plat 1 (29 Units), Plat 2 (29 Units)
Southwest Corner of State Route 20A and Albon Road	Villa Apartments	40	2 bedroom / 2 car garage
Stone Gate (Plat 7)	Lots	9	-
Stoney Creek	SFD / Lots	351	SFR (281 Units), Lots (70 units)
Stoney Creek (Plat 2)	Lots	14	-
Telluride	Residential	92	-
The Villas at Blystone	Lots	15	-
Timber Valley (Plat 2)	Lots	17	-
Villans Way	Lots	39	-
Waterside (Plat 19)	Lots	62	Plat 19 (16 Units), Plat 22 (10 Units), Plat 23 (12 Units), Plat 24 (11 Units), Plat 25 (13 Units)
Waterville-Monclova Road and the MetroParks Trail	Lots	24	24 Lots (1 acre/lot)
Winterbourne Station (Plat 3)	Lots	59	Plat 3 (29 units), Plat 4 (30 Units)
Potential Units		2,349	
Waterville City			
8 Acre parcel	MF	TBD	8 Acre Vacent Parcel that's zoned for multifamily residential development
Development project (extension)	SFD	183	-
SFD Development	SFD	92	Either Plated or in the process of being plated
Potential Units		275	
Whitehouse Village			
Blue Grass (Plat 2)	Lots	1	13 total lots with 12 lots already developed
Heller Rd	Lots	3	4 total lots with 1 lot already developed
Oake Pointe	Lots	1	24 total lots with 23 lots already developed
SFD developments	SFD	TBD	As of 12/31/22 - 20 permits have been issued. Not sure of unit count
Steeplechase (Plat 5)	Lots	1	24 total lots with 23 lots already developed
Steeplechase (Plat 6)	Lots	4	19 total lots with 15 lots already developed
Steeplechase (Plat 7)	Lots	11	14 total lots with 3 lots already developed
The Preserve (Plat 1)	Lots	8	12 total lots with 4 lots already developed
The Preserve (Plat 2)	Lots	5	18 total lots with 13 lots already developed
Wesley Farms (PUD) Plat 1	Lots	1	43 total lots with 42 lots already developed
Wesley Farms (PUD) Plat 2	Lots	1	34 total lots with 33 lots already developed
Whitehouse Meadows (Plat 3)	Lots	2	8 total lots with 6 lots already developed
Whitehouse Meadows (Plat 4)	Lots	9	12 total lots with 3 lots already developed
Witte Walk	Lots	11	16 total lots with 5 lots already developed
Potential Units		58	
Grand Total Units		2,682	

Source: Anthony Wayne Local School District

RESIDENT LIVE BIRTH DATA

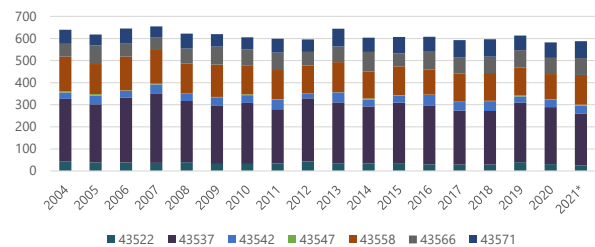
Utilization of resident live birth data is recommended when projecting future kindergarten enrollments. This data provides a helpful overall trend. Large bubbles in birth counts, either up or down, can also be planned for or anticipated by the District.

In addition, the live birth counts are used in determining a birth-to-kindergarten and birth-to-first grade survival ratio. This ratio identifies the percentage of children born in a representative area who attend kindergarten and first grade in the District five and six years later. The survival ratios for birth-to-kindergarten, birth-to-first grade, as well as grades 1-12 can be found on page 27 of this report.

Data is arranged by the residence of the mother. For example, if a mother lives in Whitehouse village but delivers her baby in Toledo, the birth is counted in Whitehouse village. Live birth counts are different from live birth rates. The live birth count is simply the actual number of live births. A birth rate is the number of births per 1,000 women in a specified population group.

The table and graph include the resident live birth counts for ZIP codes 43402, 43522, 43532, 43537, 43542, 43547, 43551, 43558, 43566, 43571, and 43614. Upon analysis of the map on the following page, only live birth counts for ZIP codes 43522, 43537, 43542, 43547, 43558, 43566, and 43571 were used in the development of the enrollment projections.

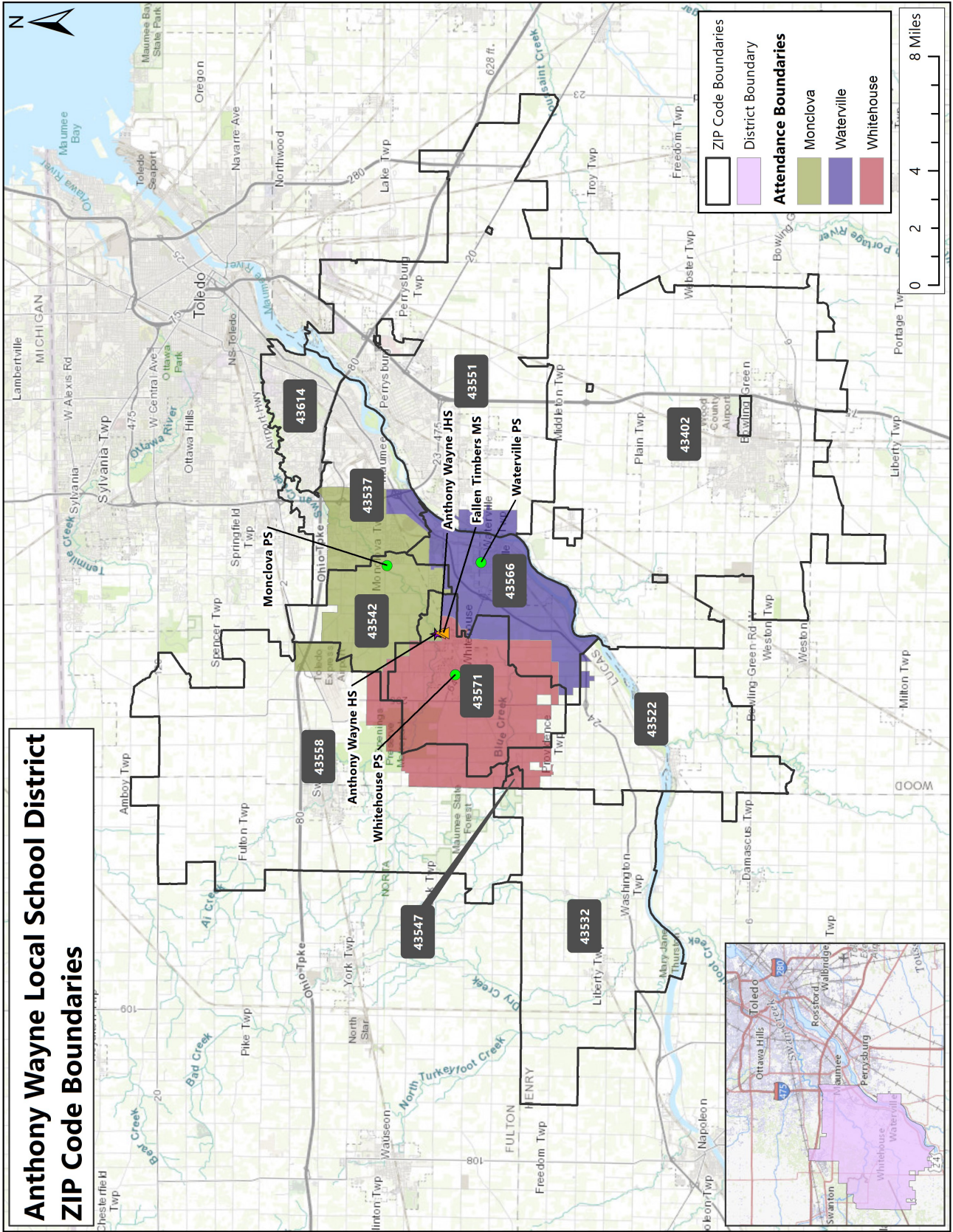
**ANTHONY WAYNE LOCAL SCHOOL DISTRICT
ZIP CODES
RESIDENT LIVE BIRTH COUNTS**



**ANTHONY WAYNE LOCAL SCHOOL DISTRICT ZIP CODES
RESIDENT LIVE BIRTH COUNTS**

Year	43402	43522	43532	43537	43542	43547	43551	43558	43566	43571	43614
2004	360	44	57	283	28	5	402	158	58	64	395
2005	294	38	39	264	40	6	389	136	85	49	352
2006	288	38	47	295	30	2	433	153	61	66	357
2007	308	37	53	312	43	3	405	153	58	49	419
2008	339	40	28	277	34	0	395	135	68	68	417
2009	337	32	50	263	39	1	439	147	81	57	393
2010	311	32	39	276	35	4	409	129	75	54	395
2011	309	34	37	246	42	4	438	131	79	63	376
2012	317	43	49	286	23	1	464	124	62	57	386
2013	312	35	36	276	45	1	464	136	71	80	399
2014	328	34	28	258	31	5	467	122	89	65	388
2015	311	33	38	277	32	1	461	131	59	74	381
2016	307	30	44	267	48	1	451	113	84	65	373
2017	296	29	34	245	38	2	488	128	73	78	362
2018	270	29	39	243	44	2	443	126	74	79	304
2019	282	40	52	270	28	6	451	125	78	66	343
2020	232	31	38	258	34	1	450	115	73	70	334
2021*	250	26	43	233	37	4	466	135	76	77	335

Source: Ohio Department of Health (*preliminary)



SURVIVAL RATIOS

The chart below demonstrates the ten-year changes in enrollment as students move through the system. Percentages greater than 100 indicate that there are more students than there were in the previous grade the previous year. In other words, there was an increase in student population where new students were added to the system. Percentages less than 100 indicate that there was decline or students left the system. If the exact number of students in 1st grade during the 2015-16 school year were present in 2nd grade for the 2016-17 school year, the survival ratio would be 100 percent.

Birth-to-Kindergarten and Birth-to-First Grade: This ratio indicates the number of children born in the area who attend kindergarten and first grade in the district five and six years later. What is important to note is the trend in survival ratios, not necessarily the actual number.

The COVID-19 pandemic introduced an unforeseen level of volatility, nationwide, as seen in the survival ratios for the 2019-20 to 2020-21 and 2020-21 to 2021-22 school years. These ratios will need to be monitored closely over the next few years as new trends are established.

The following table illustrates the historical survival ratios in the Anthony Wayne Local School District over the past ten years by grade level.

Survival Ratios - District-wide

from	to	Birth to K	K to 1	Birth to 1	1 to 2	2 to 3	3 to 4	4 to 5	5 to 6	6 to 7	7 to 8	8 to 9	9 to 10	10 to 11	11 to 12
2013-14	2014-15	54.42%	128.45%	66.67%	103.81%	104.20%	102.58%	99.40%	103.45%	100.83%	101.63%	101.28%	101.42%	99.43%	103.77%
2014-15	2015-16	52.93%	119.58%	65.08%	96.31%	99.33%	102.31%	101.40%	100.30%	98.89%	98.07%	95.71%	96.46%	101.12%	99.42%
2015-16	2016-17	54.84%	130.64%	69.14%	105.92%	105.23%	103.02%	101.41%	102.20%	100.30%	102.25%	101.40%	98.88%	97.91%	104.71%
2016-17	2017-18	52.21%	123.95%	67.97%	103.91%	102.63%	104.64%	103.58%	105.28%	98.65%	101.20%	101.10%	95.57%	101.98%	99.73%
2017-18	2018-19	58.14%	133.48%	69.70%	103.39%	101.88%	100.96%	106.96%	103.14%	103.17%	102.19%	103.25%	101.09%	109.86%	102.22%
2018-19	2019-20	61.16%	125.82%	73.15%	102.01%	108.85%	105.23%	108.57%	101.18%	100.30%	100.77%	97.33%	96.56%	98.12%	101.58%
2019-20	2020-21	62.75%	126.64%	77.46%	99.13%	99.34%	98.19%	98.25%	97.95%	99.12%	99.70%	99.24%	99.45%	96.74%	101.64%
2020-21	2021-22	53.55%	112.23%	70.43%	97.41%	102.33%	101.65%	104.91%	102.98%	104.78%	103.54%	98.48%	96.93%	101.66%	102.15%
2021-22	2022-23	56.19%	114.46%	61.29%	105.45%	100.30%	99.72%	100.00%	99.71%	100.00%	104.27%	100.28%	101.55%	100.79%	98.91%
mean simple all years		56.24%	123.92%	68.99%	101.93%	102.68%	102.03%	102.72%	101.80%	100.67%	101.51%	99.79%	98.66%	100.84%	101.57%
std. dev. simple all years		3.71%	7.19%	4.64%	3.50%	3.08%	2.23%	3.53%	2.24%	2.05%	1.89%	2.33%	2.35%	3.84%	1.95%
mean simple 5 years		58.36%	122.53%	70.40%	101.48%	102.54%	101.15%	103.74%	100.99%	101.47%	102.09%	99.72%	99.12%	101.43%	101.30%
std. dev. simple 5 years		3.71%	8.93%	5.93%	3.23%	3.73%	2.63%	4.45%	2.21%	2.39%	1.89%	2.25%	2.30%	5.11%	1.37%
mean simple 3 years		57.50%	117.78%	69.72%	100.66%	100.66%	99.85%	101.05%	100.21%	101.30%	102.50%	99.33%	99.31%	99.73%	100.90%
std. dev. simple 3 years		4.74%	7.76%	8.11%	4.23%	1.53%	1.73%	3.45%	2.55%	3.04%	2.46%	0.91%	2.31%	2.63%	1.74%
mean simple 2 years		54.87%	113.34%	65.86%	101.43%	101.31%	100.68%	102.45%	101.34%	102.39%	103.91%	99.38%	99.24%	101.22%	100.53%
std. dev. simple 2 years		1.87%	1.58%	6.46%	5.69%	1.44%	1.37%	3.47%	2.31%	3.38%	0.52%	1.28%	3.26%	0.61%	2.29%
mean weighted all years		56.92%	119.77%	68.43%	101.88%	101.94%	101.05%	102.48%	101.01%	101.12%	102.48%	99.61%	99.13%	100.68%	100.90%
std. dev. weighted all years		3.62%	7.69%	6.06%	3.59%	2.92%	2.27%	3.62%	2.18%	2.33%	1.94%	1.71%	2.33%	3.31%	1.72%
mean weighted 5 years		56.65%	116.52%	66.48%	102.38%	101.23%	100.37%	101.72%	100.51%	101.22%	103.28%	99.61%	99.82%	100.62%	100.31%
std. dev. weighted 5 years		3.22%	6.33%	6.70%	3.99%	2.38%	1.80%	3.37%	1.90%	2.43%	1.77%	1.25%	2.35%	2.44%	1.70%
mean weighted 3 years		55.99%	114.55%	63.53%	103.79%	100.62%	100.00%	100.79%	100.21%	100.80%	103.96%	99.93%	100.66%	100.78%	99.59%
std. dev. weighted 3 years		2.08%	3.17%	5.46%	3.91%	1.00%	1.00%	2.36%	1.62%	2.25%	1.11%	0.86%	2.16%	1.08%	1.58%
mean weighted 2 years		56.07%	114.35%	61.73%	105.07%	100.39%	99.81%	100.23%	99.86%	100.23%	104.24%	100.20%	101.33%	100.83%	99.07%
std. dev. weighted 2 years		0.80%	0.67%	2.75%	2.42%	0.61%	0.58%	1.48%	0.98%	1.44%	0.22%	0.54%	1.39%	0.26%	0.97%

ANTHONY WAYNE LOCAL SCHOOL DISTRICT HISTORICAL ENROLLMENT

As indicated in the table below, over the past ten years, K-12 student enrollment in the Anthony Wayne Local School District has decreased by 82 students. From the 2013-14 to the 2019-20 school year, K-12 student enrollment increased by 40 students. Since the 2019-20 school year, K-12 student enrollment has decreased by 122 students.

Historical Enrollment - District-wide

Grade	2013-14	2014-15	2015-16	2016-17	2017-18	2018-19	2019-20	2020-21	2021-22	2022-23
PK	0	40	48	61	85	89	81	60	89	89
K	232	240	235	238	224	275	274	278	249	245
1	289	298	287	307	295	299	346	347	312	285
2	333	300	287	304	319	305	305	343	338	329
3	349	347	298	302	312	325	332	303	351	339
4	334	358	355	307	316	315	342	326	308	350
5	348	332	363	360	318	338	342	336	342	308
6	360	360	333	371	379	328	342	335	346	341
7	367	363	356	334	366	391	329	339	351	346
8	391	373	356	364	338	374	394	328	351	366
9	352	396	357	361	368	349	364	391	323	352
10	349	357	382	353	345	372	337	362	379	328
11	318	347	361	374	360	379	365	326	368	382
12	395	330	345	378	373	368	385	371	333	364
K - 12 Total	4,417	4,401	4,315	4,353	4,313	4,418	4,457	4,385	4,351	4,335
Grand Total	4,417	4,441	4,363	4,414	4,398	4,507	4,538	4,445	4,440	4,424

Source: Anthony Wayne Local School District

Historical Enrollment - District-wide

Grade	2013-14	2014-15	2015-16	2016-17	2017-18	2018-19	2019-20	2020-21	2021-22	2022-23
PK	0	40	48	61	85	89	81	60	89	89
K - 4	1,537	1,543	1,462	1,458	1,466	1,519	1,599	1,597	1,558	1,548
5 - 6	708	692	696	731	697	666	684	671	688	649
7 - 8	758	736	712	698	704	765	723	667	702	712
9 - 12	1,414	1,430	1,445	1,466	1,446	1,468	1,451	1,450	1,403	1,426
K - 12 Total	4,417	4,401	4,315	4,353	4,313	4,418	4,457	4,385	4,351	4,335
Grand Total	4,417	4,441	4,363	4,414	4,398	4,507	4,538	4,445	4,440	4,424

Source: Anthony Wayne Local School District

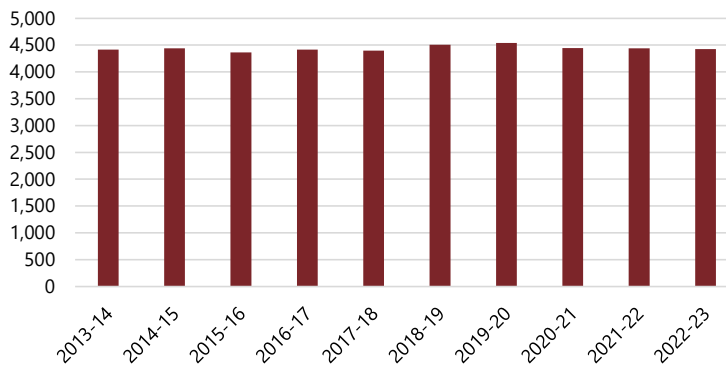
The varying shades of color in the table represent statistically significant cohort sizes. The darker blue represents smaller cohorts, while the darker red represents larger cohorts, comparatively.

Historical Enrollment - by School

School	2013-14	2014-15	2015-16	2016-17	2017-18	2018-19	2019-20	2020-21	2021-22	2022-23	Trend
Monclova	619	626	562	573	557	575	577	572	547	543	
Waterville	437	481	519	527	545	566	581	561	578	554	
Whitehouse	481	476	429	419	449	467	522	524	522	540	
Fallen Timbers	708	692	696	731	697	666	684	671	688	649	
Junior High School	758	736	712	698	704	765	723	667	702	712	
Anthony Wayne High School	1,414	1,430	1,445	1,466	1,446	1,468	1,451	1,450	1,403	1,426	
Grand Total	4,417	4,441	4,363	4,414	4,398	4,507	4,538	4,445	4,440	4,424	

Source: Anthony Wayne Local School District

**HISTORICAL ENROLLMENT -
DISTRICT-WIDE**



Open Enrollment

The table below illustrates the number of students living in the District open enrolling out of the District.

Open Enrollment - Out

	2020-21	2021-22	2022-23
Open Enrollment - Out	74	95	70

Source: Anthony Wayne Local School District

Homeschool

The table below illustrates the number of students living in the District who are homeschooled.

Homeschool

	2019-20	2020-21	2021-22	2022-23
Homeschool	116	160	165	185

Source: Anthony Wayne Local School District

Non-public / Charter

The table below illustrates the number of students living in the District who are attending non-public or charter school.

Non-public / Charter

	2013-14	2014-15	2015-16	2016-17	2017-18	2018-19	2019-20	2020-21	2021-22	2022-23
Non-public / Charter	27	45	52	40	38	34	50	59	63	50

Source: Anthony Wayne Local School District

PROJECTED ENROLLMENT

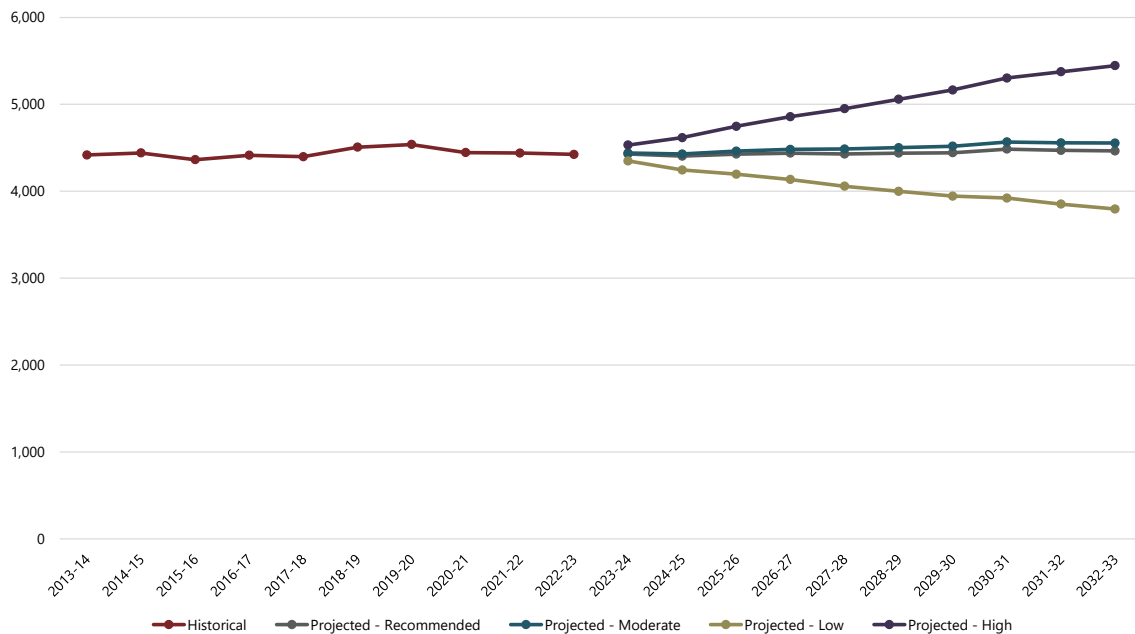
Cooperative Strategies developed low, moderate, high, and recommended enrollment projections for the Anthony Wayne Local School District. The moderate enrollment projections are based on a selected average or weighted average of survival ratios (in this case, a 5-year simple average, by school). The low and high enrollment projections are developed using statistical distributional theory, providing the District with a more conservative (low) and more liberal (high) enrollment projection. The recommended enrollment projection is based on a detailed analysis of historical enrollment and resulting survival ratios over the past 10 years, by school. Significant shifts in survival ratio patterns are realized and accounted for in determining projection ratios independently for each grade level. The recommended illustrates the most likely direction of the District based on more recent trends.

The range of enrollment projections from low (conservative) to high (liberal) are offered due to the limitations of the cohort survival method in factoring changes to policies, program offerings, and future changes in housing and migration patterns. For example, the low enrollment projection might be used if housing declines significantly more than anticipated; the high enrollment projection might be used if housing growth increases at a more rapid rate than seen in recent years.

It should be noted that the actual live birth counts are available through 2021 and project kindergarten enrollment through 2026-27. To project kindergarten through 2032-33, a simple average of the last 3 years of live birth counts was used.

Projected PK enrollment does not follow the cohort survival method but is based on the current 2022-23 enrollment of 89 PK students.

HISTORICAL & PROJECTED ENROLLMENT - ANTHONY WAYNE LOCAL SCHOOL DISTRICT



ANTHONY WAYNE LOCAL SCHOOL DISTRICT PROJECTED ENROLLMENT—RECOMMENDED

Based on the Recommended projected enrollment, student enrollment in the Anthony Wayne Local School District is projected to increase from 4,433 in the 2022-23 school year to 4,375 K-12 students in the 2032-33 school year.

Projected Enrollment - Recommended - District-wide

Grade	2023-24	2024-25	2025-26	2026-27	2027-28	2028-29	2029-30	2030-31	2031-32	2032-33
PK	89	89	89	89	89	89	89	89	89	89
K	269	265	256	268	263	263	263	263	263	263
1	296	323	320	309	320	317	317	317	317	317
2	294	304	334	330	318	331	326	326	326	326
3	336	301	310	340	336	326	337	333	333	333
4	344	341	305	314	346	341	329	343	337	337
5	360	353	350	314	322	355	350	338	352	347
6	311	363	357	354	317	325	358	353	342	355
7	343	313	366	359	356	319	327	361	356	344
8	353	350	320	373	367	363	326	334	368	363
9	365	352	349	319	372	366	362	325	333	367
10	349	362	349	346	316	369	363	359	322	330
11	331	352	365	352	349	319	372	366	362	325
12	388	336	357	371	358	355	324	378	371	368
K - 12 Total	4,339	4,315	4,338	4,349	4,340	4,349	4,354	4,396	4,382	4,375
Grand Total	4,428	4,404	4,427	4,438	4,429	4,438	4,443	4,485	4,471	4,464

Source: Cooperative Strategies

Projected Enrollment - Recommended - District-wide

Grade	2023-24	2024-25	2025-26	2026-27	2027-28	2028-29	2029-30	2030-31	2031-32	2032-33
PK	89	89	89	89	89	89	89	89	89	89
K - 4	1,539	1,534	1,525	1,561	1,583	1,578	1,572	1,582	1,576	1,576
5 - 6	671	716	707	668	639	680	708	691	694	702
7 - 8	696	663	686	732	723	682	653	695	724	707
9 - 12	1,433	1,402	1,420	1,388	1,395	1,409	1,421	1,428	1,388	1,390
K - 12 Total	4,339	4,315	4,338	4,349	4,340	4,349	4,354	4,396	4,382	4,375
Grand Total	4,428	4,404	4,427	4,438	4,429	4,438	4,443	4,485	4,471	4,464

Source: Cooperative Strategies

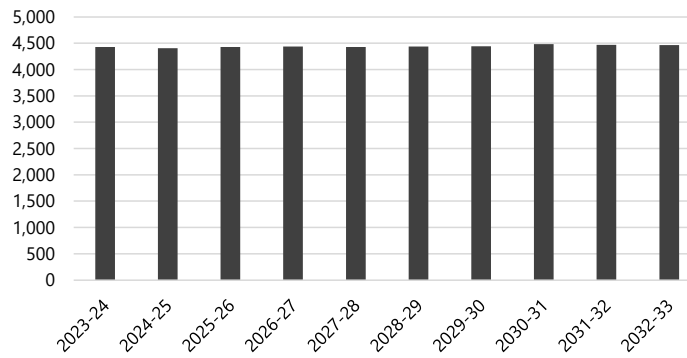
The varying shades of color in the table represent statistically significant cohort sizes. The darker blue represents smaller cohorts, while the darker red represents larger cohorts, comparatively.

Projected Enrollment - Recommended - by School

School	2023-24	2024-25	2025-26	2026-27	2027-28	2028-29	2029-30	2030-31	2031-32	2032-33	Trend
Monclova	524	519	499	509	513	514	510	508	514	514	
Waterville	551	561	576	599	587	591	586	591	590	590	
Whitehouse	553	543	539	542	572	562	565	572	561	561	
Fallen Timbers	671	716	707	668	639	680	708	691	694	702	
Junior High School	696	663	686	732	723	682	653	695	724	707	
Anthony Wayne High School	1,433	1,402	1,420	1,388	1,395	1,409	1,421	1,428	1,388	1,390	
Grand Total	4,428	4,404	4,427	4,438	4,429	4,438	4,443	4,485	4,471	4,464	

Source: Cooperative Strategies

**PROJECTED ENROLLMENT - RECOMMENDED -
DISTRICT-WIDE**



ANTHONY WAYNE LOCAL SCHOOL DISTRICT PROJECTED ENROLLMENT—MODERATE

Based on the Moderate projected enrollment, student enrollment in the Anthony Wayne Local School District is projected to increase from 4,335 in the 2022-23 school year to 4,466 K-12 students in the 2032-33 school year.

Projected Enrollment - Moderate - District-wide

Grade	2023-24	2024-25	2025-26	2026-27	2027-28	2028-29	2029-30	2030-31	2031-32	2032-33
PK	89	89	89	89	89	89	89	89	89	89
K	270	266	257	269	264	264	264	264	264	264
1	301	330	328	316	328	324	324	324	324	324
2	291	305	336	332	321	333	328	328	328	328
3	338	298	313	345	341	330	342	337	337	337
4	344	343	303	316	350	345	334	347	342	342
5	363	357	356	314	328	363	358	346	359	354
6	311	367	360	359	317	331	366	361	349	363
7	346	316	372	366	365	322	336	372	367	355
8	353	353	322	380	373	372	329	343	379	374
9	365	352	352	321	379	372	371	328	342	378
10	349	362	349	349	318	375	369	368	325	339
11	333	354	367	354	354	323	381	374	373	330
12	387	337	358	372	359	359	327	386	379	378
K - 12 Total	4,351	4,340	4,373	4,393	4,397	4,413	4,429	4,478	4,468	4,466
Grand Total	4,440	4,429	4,462	4,482	4,486	4,502	4,518	4,567	4,557	4,555

Source: Cooperative Strategies

Projected Enrollment - Moderate - District-wide

Grade	2023-24	2024-25	2025-26	2026-27	2027-28	2028-29	2029-30	2030-31	2031-32	2032-33
PK	89	89	89	89	89	89	89	89	89	89
K - 4	1,544	1,542	1,537	1,578	1,604	1,596	1,592	1,600	1,595	1,595
5 - 6	674	724	716	673	645	694	724	707	708	717
7 - 8	699	669	694	746	738	694	665	715	746	729
9 - 12	1,434	1,405	1,426	1,396	1,410	1,429	1,448	1,456	1,419	1,425
K - 12 Total	4,351	4,340	4,373	4,393	4,397	4,413	4,429	4,478	4,468	4,466
Grand Total	4,440	4,429	4,462	4,482	4,486	4,502	4,518	4,567	4,557	4,555

Source: Cooperative Strategies

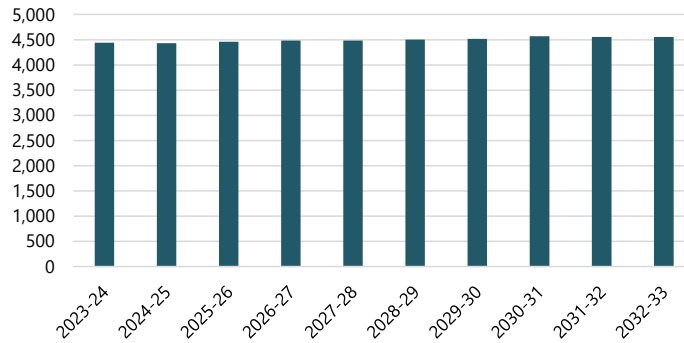
The varying shades of color in the table represent statistically significant cohort sizes. The darker blue represents smaller cohorts, while the darker red represents larger cohorts, comparatively.

Projected Enrollment - Moderate - by School

School	2023-24	2024-25	2025-26	2026-27	2027-28	2028-29	2029-30	2030-31	2031-32	2032-33	Trend
Monclova	528	525	508	521	528	528	524	522	528	528	
Waterville	553	565	582	607	596	598	595	598	598	598	
Whitehouse	552	541	536	539	569	559	562	569	558	558	
Fallen Timbers	674	724	716	673	645	694	724	707	708	717	
Junior High School	699	669	694	746	738	694	665	715	746	729	
Anthony Wayne High School	1,434	1,405	1,426	1,396	1,410	1,429	1,448	1,456	1,419	1,425	
Grand Total	4,440	4,429	4,462	4,482	4,486	4,502	4,518	4,567	4,557	4,555	

Source: Cooperative Strategies

PROJECTED ENROLLMENT - MODERATE - DISTRICT-WIDE



ANTHONY WAYNE LOCAL SCHOOL DISTRICT PROJECTED ENROLLMENT—LOW

Based on the Low projected enrollment, student enrollment in the Anthony Wayne Local School District is projected to decrease from 4,335 in the 2022-23 school year to 3,707 K-12 students in the 2032-33 school year.

Projected Enrollment - Low- District-wide

Grade	2023-24	2024-25	2025-26	2026-27	2027-28	2028-29	2029-30	2030-31	2031-32	2032-33
PK	89	89	89	89	89	89	89	89	89	89
K	250	246	238	248	244	244	244	244	244	244
1	286	289	287	278	286	284	284	284	284	284
2	283	281	287	284	274	283	281	281	281	281
3	331	285	283	289	285	276	285	283	283	283
4	338	330	285	280	288	284	274	284	281	281
5	356	344	336	289	286	292	289	279	289	286
6	308	356	344	336	289	286	292	289	279	289
7	342	309	357	345	337	290	287	294	290	280
8	350	347	313	362	349	341	294	290	297	293
9	361	346	342	309	357	345	337	290	286	293
10	345	354	339	336	303	350	338	330	284	281
11	325	342	351	336	333	300	347	335	327	282
12	385	327	345	354	338	335	303	350	338	330
K - 12 Total	4,260	4,156	4,107	4,046	3,969	3,910	3,855	3,833	3,763	3,707
Grand Total	4,349	4,245	4,196	4,135	4,058	3,999	3,944	3,922	3,852	3,796

Source: Cooperative Strategies

Projected Enrollment - Low- District-wide

Grade	2023-24	2024-25	2025-26	2026-27	2027-28	2028-29	2029-30	2030-31	2031-32	2032-33
PK	89	89	89	89	89	89	89	89	89	89
K - 4	1,488	1,431	1,380	1,379	1,377	1,371	1,368	1,376	1,373	1,373
5 - 6	664	700	680	625	575	578	581	568	568	575
7 - 8	692	656	670	707	686	631	581	584	587	573
9 - 12	1,416	1,369	1,377	1,335	1,331	1,330	1,325	1,305	1,235	1,186
K - 12 Total	4,260	4,156	4,107	4,046	3,969	3,910	3,855	3,833	3,763	3,707
Grand Total	4,349	4,245	4,196	4,135	4,058	3,999	3,944	3,922	3,852	3,796

Source: Cooperative Strategies

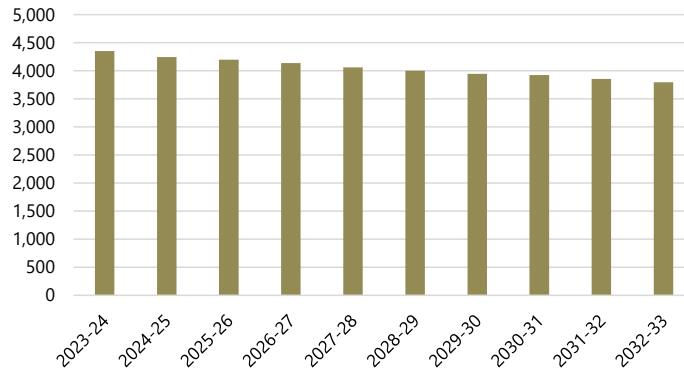
The varying shades of color in the table represent statistically significant cohort sizes. The darker blue represents smaller cohorts, while the darker red represents larger cohorts, comparatively.

Projected Enrollment - Low - by School

School	2023-24	2024-25	2025-26	2026-27	2027-28	2028-29	2029-30	2030-31	2031-32	2032-33	Trend
Monclova	517	499	475	477	479	478	475	474	480	480	
Waterville	529	520	515	522	504	506	503	506	506	506	
Whitehouse	531	501	479	469	483	476	479	485	476	476	
Fallen Timbers	664	700	680	625	575	578	581	568	568	575	
Junior High School	692	656	670	707	686	631	581	584	587	573	
Anthony Wayne High School	1,416	1,369	1,377	1,335	1,331	1,330	1,325	1,305	1,235	1,186	
Grand Total	4,349	4,245	4,196	4,135	4,058	3,999	3,944	3,922	3,852	3,796	

Source: Cooperative Strategies

PROJECTED ENROLLMENT - LOW- DISTRICT-WIDE



ANTHONY WAYNE LOCAL SCHOOL DISTRICT PROJECTED ENROLLMENT—HIGH

Based on the High projected enrollment, student enrollment in the Anthony Wayne Local School District is projected to increase from 4,335 in the 2022-23 school year to 5,356 students in the 2032-33 school year.

Projected Enrollment - High - District-wide

Grade	2023-24	2024-25	2025-26	2026-27	2027-28	2028-29	2029-30	2030-31	2031-32	2032-33
PK	89	89	89	89	89	89	89	89	89	89
K	291	286	277	290	284	284	284	284	284	284
1	317	373	369	358	370	366	366	366	366	366
2	298	331	391	386	373	387	382	382	382	382
3	345	312	345	409	404	390	406	400	400	400
4	350	356	324	355	421	416	402	418	412	412
5	370	370	377	342	375	446	440	425	442	436
6	314	377	378	384	348	382	455	448	433	451
7	350	322	387	387	394	357	392	466	460	444
8	356	360	332	398	399	406	368	403	480	473
9	369	359	363	334	401	402	408	370	406	483
10	353	369	359	363	335	402	402	409	371	407
11	340	366	383	373	377	347	417	417	424	385
12	389	347	373	390	380	384	354	425	425	433
K - 12 Total	4,442	4,528	4,658	4,769	4,861	4,969	5,076	5,213	5,285	5,356
Grand Total	4,531	4,617	4,747	4,858	4,950	5,058	5,165	5,302	5,374	5,445

Source: Cooperative Strategies

Projected Enrollment - High - District-wide

Grade	2023-24	2024-25	2025-26	2026-27	2027-28	2028-29	2029-30	2030-31	2031-32	2032-33
PK	89	89	89	89	89	89	89	89	89	89
K - 4	1,601	1,658	1,706	1,798	1,852	1,843	1,840	1,850	1,844	1,844
5 - 6	684	747	755	726	723	828	895	873	875	887
7 - 8	706	682	719	785	793	763	760	869	940	917
9 - 12	1,451	1,441	1,478	1,460	1,493	1,535	1,581	1,621	1,626	1,708
K - 12 Total	4,442	4,528	4,658	4,769	4,861	4,969	5,076	5,213	5,285	5,356
Grand Total	4,531	4,617	4,747	4,858	4,950	5,058	5,165	5,302	5,374	5,445

Source: Cooperative Strategies

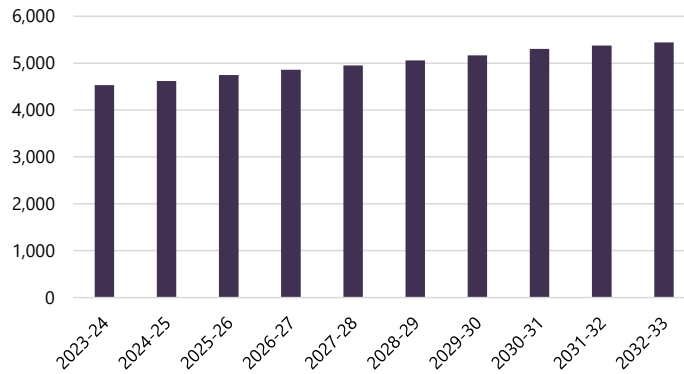
The varying shades of color in the table represent statistically significant cohort sizes. The darker blue represents smaller cohorts, while the darker red represents larger cohorts, comparatively.

Projected Enrollment - High - by School

School	2023-24	2024-25	2025-26	2026-27	2027-28	2028-29	2029-30	2030-31	2031-32	2032-33	Trend
Monclova	541	550	544	566	578	579	573	571	578	578	
Waterville	576	615	654	702	701	703	700	704	704	704	
Whitehouse	573	582	597	619	662	650	656	664	651	651	
Fallen Timbers	684	747	755	726	723	828	895	873	875	887	
Junior High School	706	682	719	785	793	763	760	869	940	917	
Anthony Wayne High School	1,451	1,441	1,478	1,460	1,493	1,535	1,581	1,621	1,626	1,708	
Grand Total	4,531	4,617	4,747	4,858	4,950	5,058	5,165	5,302	5,374	5,445	

Source: Cooperative Strategies

PROJECTED ENROLLMENT - HIGH - DISTRICT-WIDE



ENROLLMENT BY SCHOOL

The following pages illustrate historical and projected enrollment by school of attendance.

MONCLOVA PRIMARY SCHOOL..... 41

WATERVILLE PRIMARY SCHOOL 43

WHITEHOUSE PRIMARY SCHOOL 45

FALLEN TIMBERS MIDDLE SCHOOL 47

ANTHONY WAYNE JUNIOR SCHOOL 48

ANTHONY WAYNE HIGH SCHOOL 49

MONCLOVA PRIMARY SCHOOL

Students attending Monclova Primary School feed into Fallen Timbers Middle School.

Historical Enrollment - Monclova

Grade	2013-14	2014-15	2015-16	2016-17	2017-18	2018-19	2019-20	2020-21	2021-22	2022-23
PK	0	0	0	0	0	28	27	35	30	49
K	95	96	69	96	67	77	82	82	69	65
1	100	136	117	110	120	105	113	114	113	85
2	146	103	130	123	112	122	100	114	111	118
3	140	148	102	136	122	120	131	100	116	109
4	138	143	144	108	136	123	124	127	108	117
Grand Total	619	626	562	573	557	575	577	572	547	543

Source: Anthony Wayne Local School District

Projected Enrollment - Recommended - Monclova

Grade	2023-24	2024-25	2025-26	2026-27	2027-28	2028-29	2029-30	2030-31	2031-32	2032-33
PK	49	49	49	49	49	49	49	49	49	49
K	70	73	71	66	70	70	70	70	70	70
1	90	97	101	99	91	97	97	97	97	97
2	85	91	98	102	99	92	98	98	98	98
3	119	87	92	99	103	101	93	99	99	99
4	111	122	88	94	101	105	103	95	101	101
Grand Total	524	519	499	509	513	514	510	508	514	514

Source: Cooperative Strategies

Projected Enrollment - Moderate - Monclova

Grade	2023-24	2024-25	2025-26	2026-27	2027-28	2028-29	2029-30	2030-31	2031-32	2032-33
PK	49	49	49	49	49	49	49	49	49	49
K	71	74	72	67	71	71	71	71	71	71
1	91	100	104	102	94	100	100	100	100	100
2	85	91	100	104	102	94	100	100	100	100
3	121	87	94	103	107	105	97	103	103	103
4	111	124	89	96	105	109	107	99	105	105
Grand Total	528	525	508	521	528	528	524	522	528	528

Source: Cooperative Strategies

The varying shades of color in the table represent statistically significant cohort sizes. The darker blue represents smaller cohorts, while the darker red represents larger cohorts, comparatively.

Projected Enrollment - Low - Monclova

Grade	2023-24	2024-25	2025-26	2026-27	2027-28	2028-29	2029-30	2030-31	2031-32	2032-33
PK	49	49	49	49	49	49	49	49	49	49
K	68	70	69	64	68	68	68	68	68	68
1	88	91	95	93	86	91	91	91	91	91
2	84	86	90	93	91	84	90	90	90	90
3	119	84	87	91	94	92	85	91	91	91
4	109	119	85	87	91	94	92	85	91	91
Grand Total	517	499	475	477	479	478	475	474	480	480

Source: Cooperative Strategies

Projected Enrollment - High - Monclova

Grade	2023-24	2024-25	2025-26	2026-27	2027-28	2028-29	2029-30	2030-31	2031-32	2032-33
PK	49	49	49	49	49	49	49	49	49	49
K	74	77	76	70	74	74	74	74	74	74
1	95	109	113	111	102	109	109	109	109	109
2	86	97	111	115	113	104	110	110	110	110
3	124	90	101	116	120	118	109	116	116	116
4	113	128	94	105	120	125	122	113	120	120
Grand Total	541	550	544	566	578	579	573	571	578	578

Source: Cooperative Strategies

The varying shades of color in the table represent statistically significant cohort sizes. The darker blue represents smaller cohorts, while the darker red represents larger cohorts, comparatively.

WATERVILLE PRIMARY SCHOOL

Students attending Waterville Primary School feed into Fallen Timbers Middle School.

Historical Enrollment - Waterville

Grade	2013-14	2014-15	2015-16	2016-17	2017-18	2018-19	2019-20	2020-21	2021-22	2022-23
PK	0	40	48	61	85	61	54	25	59	40
K	56	78	100	69	82	104	83	85	88	104
1	93	68	95	112	85	104	123	122	96	90
2	92	101	70	100	117	89	110	123	104	98
3	99	92	105	79	98	112	98	110	123	106
4	97	102	101	106	78	96	113	96	108	116
Grand Total	437	481	519	527	545	566	581	561	578	554

Source: Anthony Wayne Local School District

Projected Enrollment - Recommended - Waterville

Grade	2023-24	2024-25	2025-26	2026-27	2027-28	2028-29	2029-30	2030-31	2031-32	2032-33
PK	40	40	40	40	40	40	40	40	40	40
K	93	98	92	96	95	95	95	95	95	95
1	122	109	115	108	112	112	112	112	112	112
2	92	124	112	118	110	115	114	114	114	114
3	100	93	126	113	119	112	116	116	116	116
4	104	97	91	124	111	117	109	114	113	113
Grand Total	551	561	576	599	587	591	586	591	590	590

Source: Cooperative Strategies

Projected Enrollment - Moderate - Waterville

Grade	2023-24	2024-25	2025-26	2026-27	2027-28	2028-29	2029-30	2030-31	2031-32	2032-33
PK	40	40	40	40	40	40	40	40	40	40
K	93	98	92	96	95	95	95	95	95	95
1	126	113	120	112	117	116	116	116	116	116
2	90	126	113	119	111	116	115	115	115	115
3	100	91	128	115	121	113	118	117	117	117
4	104	97	89	125	112	118	111	115	115	115
Grand Total	553	565	582	607	596	598	595	598	598	598

Source: Cooperative Strategies

The varying shades of color in the table represent statistically significant cohort sizes. The darker blue represents smaller cohorts, while the darker red represents larger cohorts, comparatively.

Projected Enrollment - Low - Waterville

Grade	2023-24	2024-25	2025-26	2026-27	2027-28	2028-29	2029-30	2030-31	2031-32	2032-33
PK	40	40	40	40	40	40	40	40	40	40
K	85	90	84	87	87	87	87	87	87	87
1	118	97	102	96	99	99	99	99	99	99
2	86	113	93	98	92	95	95	95	95	95
3	97	86	113	92	97	91	94	94	94	94
4	103	94	83	109	89	94	88	91	91	91
Grand Total	529	520	515	522	504	506	503	506	506	506

Source: Cooperative Strategies

Projected Enrollment - High - Waterville

Grade	2023-24	2024-25	2025-26	2026-27	2027-28	2028-29	2029-30	2030-31	2031-32	2032-33
PK	40	40	40	40	40	40	40	40	40	40
K	102	107	100	105	104	104	104	104	104	104
1	134	131	138	130	135	134	134	134	134	134
2	93	139	136	143	134	139	139	139	139	139
3	102	97	144	141	149	139	145	144	144	144
4	105	101	96	143	139	147	138	143	143	143
Grand Total	576	615	654	702	701	703	700	704	704	704

Source: Cooperative Strategies

The varying shades of color in the table represent statistically significant cohort sizes. The darker blue represents smaller cohorts, while the darker red represents larger cohorts, comparatively.

WHITEHOUSE PRIMARY SCHOOL

Students attending Whitehouse Primary School feed into Fallen Timbers Middle School.

Historical Enrollment - Whitehouse

Grade	2013-14	2014-15	2015-16	2016-17	2017-18	2018-19	2019-20	2020-21	2021-22	2022-23
K	81	66	66	73	75	94	109	111	92	76
1	96	94	75	85	90	90	110	111	103	110
2	95	96	87	81	90	94	95	106	123	113
3	110	107	91	87	92	93	103	93	112	124
4	99	113	110	93	102	96	105	103	92	117
Grand Total	481	476	429	419	449	467	522	524	522	540

Source: Anthony Wayne Local School District

Projected Enrollment - Recommended - Whitehouse

Grade	2023-24	2024-25	2025-26	2026-27	2027-28	2028-29	2029-30	2030-31	2031-32	2032-33
K	106	94	93	106	98	98	98	98	98	98
1	84	117	104	102	117	108	108	108	108	108
2	117	89	124	110	109	124	114	114	114	114
3	117	121	92	128	114	113	128	118	118	118
4	129	122	126	96	134	119	117	134	123	123
Grand Total	553	543	539	542	572	562	565	572	561	561

Source: Cooperative Strategies

Projected Enrollment - Moderate - Whitehouse

Grade	2023-24	2024-25	2025-26	2026-27	2027-28	2028-29	2029-30	2030-31	2031-32	2032-33
K	106	94	93	106	98	98	98	98	98	98
1	84	117	104	102	117	108	108	108	108	108
2	116	88	123	109	108	123	113	113	113	113
3	117	120	91	127	113	112	127	117	117	117
4	129	122	125	95	133	118	116	133	122	122
Grand Total	552	541	536	539	569	559	562	569	558	558

Source: Cooperative Strategies

Projected Enrollment - Low - Whitehouse

Grade	2023-24	2024-25	2025-26	2026-27	2027-28	2028-29	2029-30	2030-31	2031-32	2032-33
K	97	86	85	97	89	89	89	89	89	89
1	80	101	90	89	101	94	94	94	94	94
2	113	82	104	93	91	104	96	96	96	96
3	115	115	83	106	94	93	106	98	98	98
4	126	117	117	84	108	96	94	108	99	99
Grand Total	531	501	479	469	483	476	479	485	476	476

Source: Cooperative Strategies

The varying shades of color in the table represent statistically significant cohort sizes. The darker blue represents smaller cohorts, while the darker red represents larger cohorts, comparatively.

Projected Enrollment - High - Whitehouse

Grade	2023-24	2024-25	2025-26	2026-27	2027-28	2028-29	2029-30	2030-31	2031-32	2032-33
K	115	102	101	115	106	106	106	106	106	106
1	88	133	118	117	133	123	123	123	123	123
2	119	95	144	128	126	144	133	133	133	133
3	119	125	100	152	135	133	152	140	140	140
4	132	127	134	107	162	144	142	162	149	149
Grand Total	573	582	597	619	662	650	656	664	651	651

Source: Cooperative Strategies

The varying shades of color in the table represent statistically significant cohort sizes. The darker blue represents smaller cohorts, while the darker red represents larger cohorts, comparatively.

FALLEN TIMBERS MIDDLE SCHOOL

Students attending Fallen Timbers Middle School feed into Anthony Wayne Junior High School.

Historical Enrollment - Fallen Timbers

Grade	2013-14	2014-15	2015-16	2016-17	2017-18	2018-19	2019-20	2020-21	2021-22	2022-23
5	348	332	363	360	318	338	342	336	342	308
6	360	360	333	371	379	328	342	335	346	341
Grand Total	708	692	696	731	697	666	684	671	688	649

Source: Anthony Wayne Local School District

Projected Enrollment - Recommended - Fallen Timbers

Grade	2023-24	2024-25	2025-26	2026-27	2027-28	2028-29	2029-30	2030-31	2031-32	2032-33
5	360	353	350	314	322	355	350	338	352	347
6	311	363	357	354	317	325	358	353	342	355
Grand Total	671	716	707	668	639	680	708	691	694	702

Source: Cooperative Strategies

Projected Enrollment - Moderate - Fallen Timbers

Grade	2023-24	2024-25	2025-26	2026-27	2027-28	2028-29	2029-30	2030-31	2031-32	2032-33
5	363	357	356	314	328	363	358	346	359	354
6	311	367	360	359	317	331	366	361	349	363
Grand Total	674	724	716	673	645	694	724	707	708	717

Source: Cooperative Strategies

Projected Enrollment - Low - Fallen Timbers

Grade	2023-24	2024-25	2025-26	2026-27	2027-28	2028-29	2029-30	2030-31	2031-32	2032-33
5	356	344	336	289	286	292	289	279	289	286
6	308	356	344	336	289	286	292	289	279	289
Grand Total	664	700	680	625	575	578	581	568	568	575

Source: Cooperative Strategies

Projected Enrollment - High - Fallen Timbers

Grade	2023-24	2024-25	2025-26	2026-27	2027-28	2028-29	2029-30	2030-31	2031-32	2032-33
5	370	370	377	342	375	446	440	425	442	436
6	314	377	378	384	348	382	455	448	433	451
Grand Total	684	747	755	726	723	828	895	873	875	887

Source: Cooperative Strategies

The varying shades of color in the table represent statistically significant cohort sizes. The darker blue represents smaller cohorts, while the darker red represents larger cohorts, comparatively.

ANTHONY WAYNE JUNIOR HIGH SCHOOL

Students attending Anthony Wayne Junior High School feed into Anthony Wayne High School.

Historical Enrollment - Junior High School

Grade	2013-14	2014-15	2015-16	2016-17	2017-18	2018-19	2019-20	2020-21	2021-22	2022-23
7	367	363	356	334	366	391	329	339	351	346
8	391	373	356	364	338	374	394	328	351	366
Grand Total	758	736	712	698	704	765	723	667	702	712

Source: Anthony Wayne Local School District

Projected Enrollment - Recommended - Junior High School

Grade	2023-24	2024-25	2025-26	2026-27	2027-28	2028-29	2029-30	2030-31	2031-32	2032-33
7	343	313	366	359	356	319	327	361	356	344
8	353	350	320	373	367	363	326	334	368	363
Grand Total	696	663	686	732	723	682	653	695	724	707

Source: Cooperative Strategies

Projected Enrollment - Moderate - Junior High School

Grade	2023-24	2024-25	2025-26	2026-27	2027-28	2028-29	2029-30	2030-31	2031-32	2032-33
7	346	316	372	366	365	322	336	372	367	355
8	353	353	322	380	373	372	329	343	379	374
Grand Total	699	669	694	746	738	694	665	715	746	729

Source: Cooperative Strategies

Projected Enrollment - Low - Junior High School

Grade	2023-24	2024-25	2025-26	2026-27	2027-28	2028-29	2029-30	2030-31	2031-32	2032-33
7	342	309	357	345	337	290	287	294	290	280
8	350	347	313	362	349	341	294	290	297	293
Grand Total	692	656	670	707	686	631	581	584	587	573

Source: Cooperative Strategies

Projected Enrollment - High - Junior High School

Grade	2023-24	2024-25	2025-26	2026-27	2027-28	2028-29	2029-30	2030-31	2031-32	2032-33
7	350	322	387	387	394	357	392	466	460	444
8	356	360	332	398	399	406	368	403	480	473
Grand Total	706	682	719	785	793	763	760	869	940	917

Source: Cooperative Strategies

The varying shades of color in the table represent statistically significant cohort sizes. The darker blue represents smaller cohorts, while the darker red represents larger cohorts, comparatively.

ANTHONY WAYNE HIGH SCHOOL

Historical Enrollment - Anthony Wayne High School

Grade	2013-14	2014-15	2015-16	2016-17	2017-18	2018-19	2019-20	2020-21	2021-22	2022-23
9	352	396	357	361	368	349	364	391	323	352
10	349	357	382	353	345	372	337	362	379	328
11	318	347	361	374	360	379	365	326	368	382
12	395	330	345	378	373	368	385	371	333	364
Grand Total	1,414	1,430	1,445	1,466	1,446	1,468	1,451	1,450	1,403	1,426

Source: Anthony Wayne Local School District

Projected Enrollment - Recommended - Anthony Wayne High School

Grade	2023-24	2024-25	2025-26	2026-27	2027-28	2028-29	2029-30	2030-31	2031-32	2032-33
9	365	352	349	319	372	366	362	325	333	367
10	349	362	349	346	316	369	363	359	322	330
11	331	352	365	352	349	319	372	366	362	325
12	388	336	357	371	358	355	324	378	371	368
Grand Total	1,433	1,402	1,420	1,388	1,395	1,409	1,421	1,428	1,388	1,390

Source: Cooperative Strategies

Projected Enrollment - Moderate - Anthony Wayne High School

Grade	2023-24	2024-25	2025-26	2026-27	2027-28	2028-29	2029-30	2030-31	2031-32	2032-33
9	365	352	352	321	379	372	371	328	342	378
10	349	362	349	349	318	375	369	368	325	339
11	333	354	367	354	354	323	381	374	373	330
12	387	337	358	372	359	359	327	386	379	378
Grand Total	1,434	1,405	1,426	1,396	1,410	1,429	1,448	1,456	1,419	1,425

Source: Cooperative Strategies

Projected Enrollment - Low - Anthony Wayne High School

Grade	2023-24	2024-25	2025-26	2026-27	2027-28	2028-29	2029-30	2030-31	2031-32	2032-33
9	361	346	342	309	357	345	337	290	286	293
10	345	354	339	336	303	350	338	330	284	281
11	325	342	351	336	333	300	347	335	327	282
12	385	327	345	354	338	335	303	350	338	330
Grand Total	1,416	1,369	1,377	1,335	1,331	1,330	1,325	1,305	1,235	1,186

Source: Cooperative Strategies

Projected Enrollment - High - Anthony Wayne High School

Grade	2023-24	2024-25	2025-26	2026-27	2027-28	2028-29	2029-30	2030-31	2031-32	2032-33
9	369	359	363	334	401	402	408	370	406	483
10	353	369	359	363	335	402	402	409	371	407
11	340	366	383	373	377	347	417	417	424	385
12	389	347	373	390	380	384	354	425	425	433
Grand Total	1,451	1,441	1,478	1,460	1,493	1,535	1,581	1,621	1,626	1,708

Source: Cooperative Strategies

The varying shades of color in the table represent statistically significant cohort sizes. The darker blue represents smaller cohorts, while the darker red represents larger cohorts, comparatively.

CONCLUSION

As with any projection, the District should pay close attention to live birth counts, enrollment in elementary schools, open enrollment, non-public enrollment, in / out migration patterns, and any housing growth. It is recommended that this document be reviewed on an annual basis to determine how more recent growth and enrollment trends will impact the enrollment projections.

Cooperative Strategies is pleased to have had the opportunity to provide the District with this demographic study. We hope this document will provide the necessary information to make informed decisions about the future of the Anthony Wayne Local School District.