

A grayscale background image of a science classroom. Several students are seated at a table, each with a microscope. They appear to be engaged in a laboratory activity. The image is semi-transparent, allowing the text to be overlaid clearly.

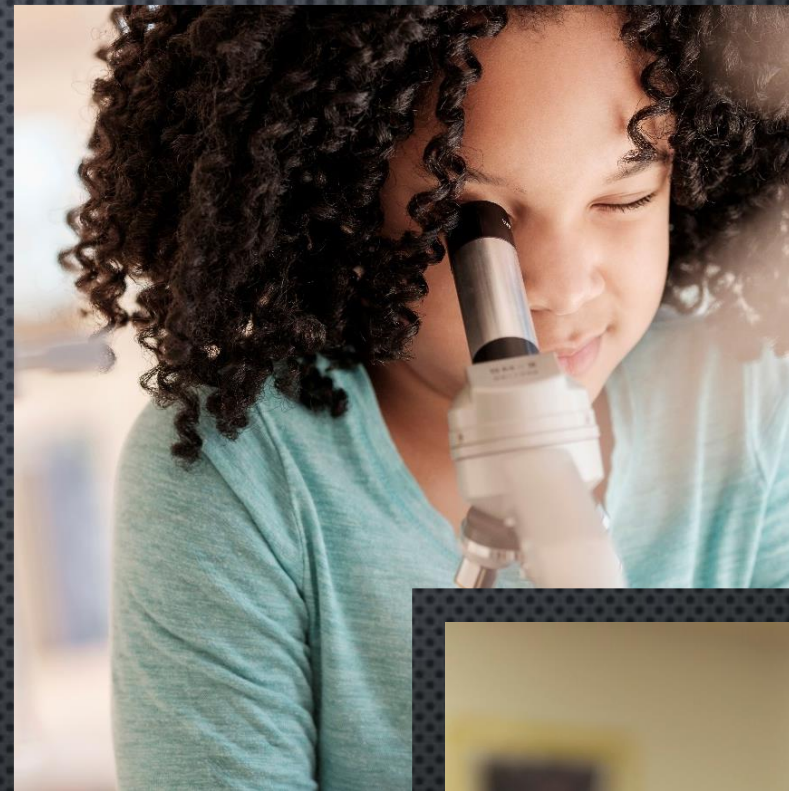
TROY AREA

SCHOOL

DISTRICT

PARENT SURVEY

- 483 families responded to the survey representing 760 students.
- Empire, Blue Ridge, and North Penn account for 64% of the internet service reported by 455 families. With Frontier making up 15% and others around 20%.
- 394 families reported owning enough personal devices for all their children.
- 125 families reported that if we return with restrictions their children will not be joining us for face-to-face instruction.
- 300 of our families indicated they would use the school's buses for transportation.
- Preferences for scheduled face to face attendance was similar across a variety of choices. Just over 300 families expressed that they would prefer only core courses taught remotely. Flexibility for students to complete remote assignments at their convenience was preferred over scheduled synchronous learning opportunities.
- The average score of 2.12 on a 1-5 scale regarding preference for a full reopening and concerns for safety indicates that opinions are aligned more with a full reopening.
- Just over three fifths of the respondents indicated that they did not want their children to wear a district issued mask.



Grade	Students represented	Percentage
kindergarten	41	5%
1	69	9%
2	51	7%
3	69	9%
4	53	7%
5	50	7%
6	54	7%
7	56	7%
8	81	11%
9	66	9%
10	56	7%
11	60	8%
12	54	7%
Total Students represented	760	

STUDENT GRADES REPRESENTED IN THE SURVEY

Provider	Subscribers	Percentage
Empire	90	20%
Blue Ridge	100	22%
North Penn	97	22%
Frontier	69	15%
Zito	7	2%
Penn Wisp	33	7%
ATT	8	2%
Hughes	13	3%
ViaSat	9	2%
Bradford	16	4%
Verizon	6	1%

INTERNET SERVICE PROVIDERS

I have access to the Internet at my house.



- 1. We will send our children back to school at TASD
- 2. We enroll our student in the TASD online program (TVA)
- 3. Other

IF THE GOVERNOR REOPENS THE STATE AND ALLOWS STUDENTS TO RETURN TO SCHOOL WITH HEALTH AND SAFETY RESTRICTIONS IN PLACE, WHICH OF THE FOLLOWING BEST DESCRIBES YOUR FAMILY'S LIKELY COURSE OF ACTION?

● We will send our children back...	358
● We enroll our student in the T...	49
● Other	76



- 1. We will use the school bus system to transport our student to school at TASD2.
- 2. We will transport our child to school on our own.

IF THE GOVERNOR REOPENS THE STATE AND ALLOWS SCHOOLS TO USE BUSES TO TRANSPORT CHILDREN WITH HEALTH AND SAFETY RESTRICTIONS IN PLACE, WHICH OF THE FOLLOWING BEST DESCRIBES YOUR FAMILY'S APPROACH?

● We will use the school bus sys...	300
● We will transport our child to ...	183



1. Every other week: One week in school, alternating with one week of Distance/Cyber Learning.

2. Even/Odd Calendar Days: Half the students come to school on EVEN days, the other half come on the ODD calendar days (Students would continue with distance learning on days that they are not in the building). (Students will be bused by region , with siblings, the same day)

3. Monday & Tuesday/Thursday & Friday: Students will be placed into two groups, Wednesdays will be Online for all (Along with the opposite two other days)

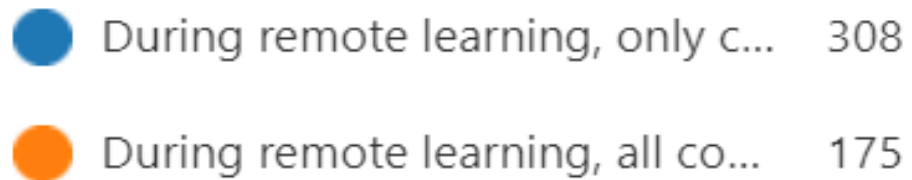
IF BECAUSE OF SOCIAL DISTANCING AND SAFETY GUIDELINES , WE MUST LIMIT THE NUMBER OF STUDENTS IN OUR SCHOOLS. WHICH OPTIONS WOULD YOU PREFER? PLEASE SELECT ALL OPTIONS YOU CAN SUPPORT.

● Every other week: One week i...	222
● Even/Odd Calendar Days: Half...	182
● Monday & Tuesday/Thursday ...	220



1. During remote learning, only core subjects will be taught.
2. During remote learning, all core & elective subjects will be taught.

SHOULD WE HAVE TO GO TO A HYBRID MODEL, WHICH OF THE FOLLOWING WOULD YOU PREFER?

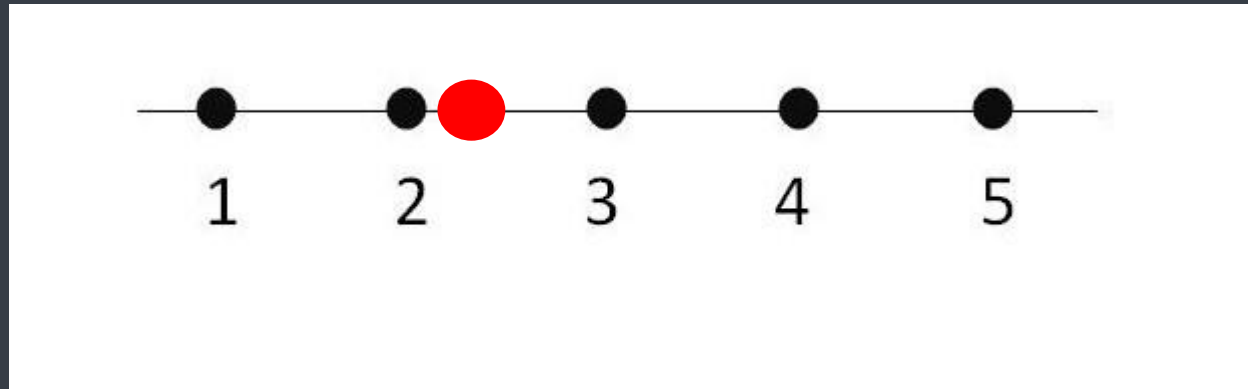


2.12

Average Number

Least Restricted

Most Restricted



Opening schools normally to fullest capacity

Maximizing social distancing and health guidelines

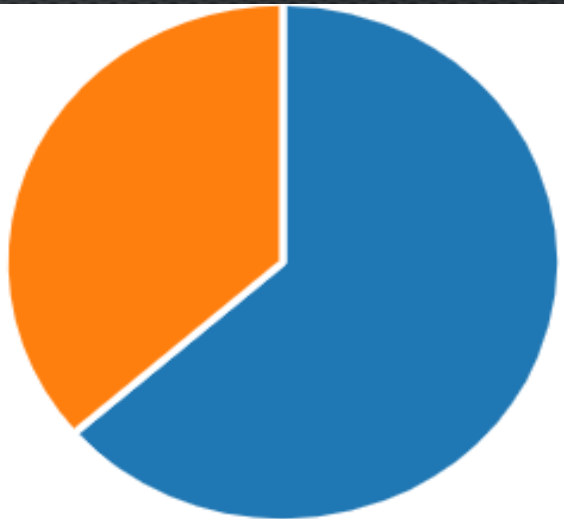
PLEASE INDICATE ON THE SCALE WHICH YOU AND YOUR FAMILY FEEL THE SCHOOL DISTRICT SHOULD FOCUS ON MOST: WITH OPENING SCHOOLS NORMALLY TO FULLEST CAPACITY BEING 1 AND MAXIMIZING SOCIAL DISTANCING AND HEALTH GUIDELINES BEING 5

1. A flexible, schedule (students work when they want/can) where students have deadlines but can complete the work when able.

2. Students have set hours and class times when they must log in to complete their work.

PLEASE LET US KNOW WHICH YOU AND YOUR FAMILY FEEL THE SCHOOL DISTRICT SHOULD FOCUS ON MOST FOR THE DISTANCE LEARNING PORTION:

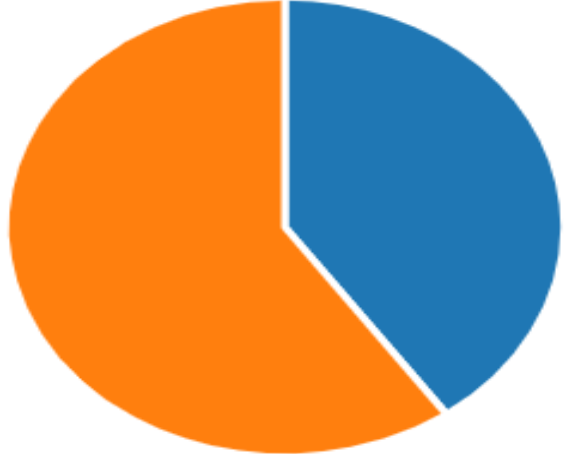
● A flexible, schedule (students ...	307
● Students have set hours and c...	176



- 1. Yes
- 2. No

IF THE CDC RECOMMENDS THAT STUDENTS WEAR MASKS, AND THE DISTRICT PROVIDES THE MASK. WILL YOU WANT YOUR CHILD TO WEAR THE DISTRICT PROVIDED MASK?

● Yes	194
● No	289





THANK

YOU

TROY AREA ADMINISTRATIVE TEAM