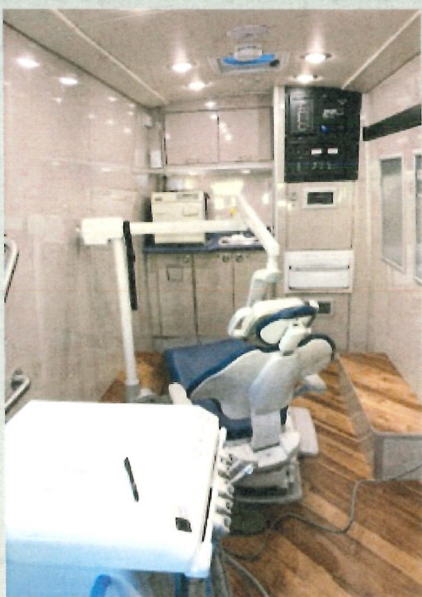




Health Partners of Western Ohio

Health Partners School Based Dental Outreach Program

School-based dental programs provide: A Dental Exam, Cleaning, Fluoride Treatments, and Dental Sealants to children right in their school. Tooth decay is the most prevalent and preventable chronic disease of children. Health Partners sets out to increase children's access to oral health services in schools with our School Based Dental Outreach Program. Parents must register their children for this service. A consent form will be sent home for parents to fill out and return them back to the school to register. Our program is open to all children Pre-K-12th grade. **NO CHILD IS TURNED AWAY.**



Attention Four County Career Center students! We will be visiting Four County Career Center this December 2022 providing dental services! Fill out the white dental form and turn it in to your teacher or school nurse by September 16th, to participate!

Dental Exam

Regular dental exams are a critical part of **preventative health care.** During a dental exam, the dentist will clean your child's teeth and check for cavities and gum disease.

Preventative Sealants

Sometimes brushing is not enough. Everyone has hard-to-reach spots in their mouth and brushing doesn't always fully clean those difficult places. When that happens, you are at risk of tooth decay.

A **sealant** is a thin resin coating that is applied to the chewing surface of teeth to prevent food from getting trapped within deep dental grooves. More than 75% of dental decay begins within these grooves and sealants protect the tooth by sealing deep grooves-creating a smooth surface which can protect teeth from decay for many years.

Fluoride Treatments

Fluoride is an easy and effective way to help prevent tooth decay. This natural mineral has been recognized for over 50 years to strengthen dental enamel and reduce cavities.



Services We Provide

- *Dental Exams
- *Dental Cleanings
- *Fluoride Treatments
- *Dental Sealants
- *Oral Health Instructions